

The Coffee Break

From Osawatomi Public Library

Catholic Charities Resource Bus



Catholic Charities USA

April 5th, 1-4pm
The bus will be onsite with free food and hygiene items.

Mark Your Calendars

Library Giving Day
April 4th

Library Giving Day

This is a great way to support your local library! For more information visit <https://foundation.neks.org/lgd>

April Events



Join the Library Board

Meetings open to all, 3rd Monday of the month, 6pm

Want to apply for the board? Visit:

osawatomieks.org/files and choose **Library Board**

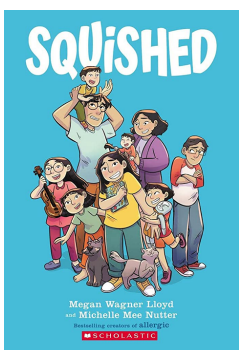
Summer Reading Teen Volunteers Needed



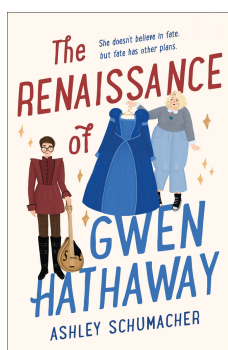
Students currently in grade 8 and above can volunteer to help with summer reading activities. Stop by the library or visit our website for an application!

New Book Features

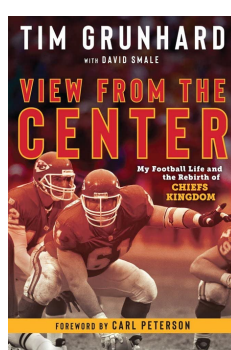
Children



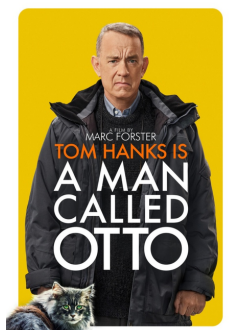
Young Adult



Adult



Video



Wooden Book Spines are available to honor or memorialize a loved one. \$125 donation per book spine

[Order Here](#) or come by!



Now made by the OHS Wood Shop
Your donation now benefits the library and purchases a locally made product!

Recommended Reads

Big news! Instead of having our regular book club meetings, we're encouraging you to read independently or start your own book club! Each month, we'll recommend a book for you. If you read it and love it, let us know!

April
She Reading List
Fiction

May
Party Hearty Kitty-Corn
Children's



Coming Up

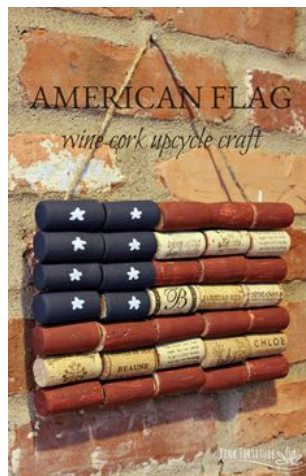
Catholic Charities Resource Bus

May 24th
1-4pm

Free food and hygiene items



Catholic Charities USA



Adult Craft Change Alert!

In order to offer higher quality, higher interest craft options, adult take and make crafts will now be available once per quarter!

Next craft: June 2023
Cork Flag

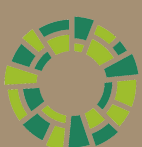
*Inspiration photo from pinkfortitude.com

Contact Us

Please stop by or reach out to let us know what you would like to see more of at your library!

Want to help support the library? [Click here to find out how!](#)

Board Meetings: The library board meeting is open to the public. Just come to the library by 6pm on the third Monday of each month!



Osawatomi Public Library
A PLACE TO BELONG
9am-6pm M-F
9am-2pm Sat.
913.755.2136