

OSAWATOMIE CITY COUNCIL  
CITY COUNCIL MEETING AGENDA

December 30, 2021

4:00 p.m., City Hall Conference Room

439 Main Street, Osawatomie, KS 66064

1. Call to Order
2. Roll Call
3. Pledge of Allegiance
4. Invocation
5. Consent Agenda
  - A. December 30<sup>th</sup> Agenda
  - B. Council Report – October
  - C. 2022 CMB Permits
6. Comments from the Public  
*Citizen participation will be limited to 5 minutes. Stand & be recognized by the Mayor.*
7. Public Hearing
  - A. 2021 Budget Amendment Hearing
8. New Business
  - A. Resolution 2021 Budget Amendment Certificate
9. Adjourn

*NEXT REGULAR MEETING – January 13<sup>th</sup>, 2021*

DEPARTMENT	FUND	VENDOR NAME	DESCRIPTION	AMOUNT	
NON-DEPARTMENTAL	GENERAL OPERATING	CITY OF OSAWATOMIE	CM GOLF MEMBERSHIP	108.00	
		MISCELLANEOUS MORRIS, BRANDON	MORRIS, BRANDON: R1491REFU	113.00	
		OSAWATOMIE GOLF COURSE	CM GOLF COURSE MEMBERSHIP	<u>108.00</u>	
			TOTAL:	329.00	
ADMINISTRATION	GENERAL OPERATING	CITY OF OSAWATOMIE	UTILITY BILLS	2.26	
			UTILITY BILLS	1,086.12	
		NAVRAT'S OFFICE PRODUCTS INC	COPY PAPER	199.50	
		FIRST OPTION BANK	TABLE CLOTH	137.13	
			WPERSONALITY PROFILE	240.00	
			CITY CLERK ADMISSION	50.00	
			CITY CLERK CERTIFICATION	115.00	
			DESK FOR CITY MANAGER	327.85	
			FED & STATE REG POSTERS	224.15	
			BEST OF PLAQUES	123.00	
			TABLE CLOTH RETURNS	39.18-	
			TABLE CLOTH RETURNS	58.77-	
			TABLE CLOTH RETURNS	39.18-	
			KANSAS EMPLOYMENT SECURITY FUN	10/08/21 - UNEMPLOYMENT	0.33
				10/22 - UNEMPLOYMENT	11.89
			KANSAS GAS SERVICE	GAS SERVICE	99.76
			HOOVERS UPHOLSTERY LARRY E. HOOVER	DESK NAMETAG & PLATE	30.00
			PAT'S SIGNS	BANNER HOSPITAL WEEK	576.00
			QUILL CORPORATION	CHAIR MAT, MARKER BOARD, S	241.30
				CHAIR MAT	168.66
				STAPLER	5.21
				3HOLE PUNCH	24.89
				CARD HOLDER, STOCK, EXPO,	53.57
			MISCELLANEOUS HOMRIGHAUSEN, JAMIE	HOMRIGHAUSEN, JAMIE:EAGLE	511.07
			ACE PEST CONTROL LLC GARY COOPER	PEST CONTROL SERVICES	105.00
			RESERVE ACCOUNT	POSTAGE	2,500.00
			TALLEY, DEBBIE	MH CUSTODIAN - OCT 2021	375.00
			BRADLEY AIR CONDITIONING & HEATING	TUNE UP & CHECK	120.00
			WASTE MANAGEMENT	REFUSE SERVICES	17.80
			GUARDIAN	GUARDIAN - 100821	16.31
				GUARDIAN 10/22 - PAYROLL	16.31
			HUMANA INSURANCE CO.	10/08 HUMANA INSURANCE	1,991.76
				10/08 HUMANA INSURANCE	86.39
				10/08 HUMANA INSURANCE	21.71
				10/22 - HUMANA INSURANCE	1,991.76
				10/22 - HUMANA INSURANCE	86.39
				10/22 - HUMANA INSURANCE	21.71
			FAMILY MEDICINE CLINICS OF MCMC	PRE-EMPLOYMENT PHYSICALS	47.00
			KPERS	KPERS - 10/08 - PAYROLL	1,299.50
				KPERS - 10/22/21 PAYROLL	1,802.41
			VANTAGEPOINT TRANSFER	OCTOBER 2021 - ICMA 10/08	31.25
				OCTOBER 2021 - ICMA 10/22	116.74
	EFTPS	10/08/21 - PAYROLL TAXES	1,048.85		
		10/22/21 - PAYROLL TAXES	1,610.40		
	RICOH USA, INC.	COPIES	71.12		
	RICOH USA, INC.	COPIER LEASE	260.47		
	RICOH USA, INC.	COPIER LEASE	82.66		
	REDISHRED KANSAS INC.	SHREDDING SERVICE	30.00		
	EVERGY	UTILITY BILL	18.14		
	SEAMANDS, TAMMY	MILEAGE - LEAGUE MEETING	81.47		
	PAYCHEX	PAYROLL SERVICES	522.66		

DEPARTMENT	FUND	VENDOR NAME	DESCRIPTION	AMOUNT
			PAYROLL SERVICES	213.49
		MOON, SAMANTHA	ICMA REIMBURSEMENTS FOR TR	228.19
			ICMA REIMBURSEMENTS FOR TR	119.02
		PLUM CREEK PROPERTIES	PROPERTY	1,000.00
		GLENDENING, BRET	LEAGUE CONF REIMBURSEMENT	<u>400.52</u>
			TOTAL:	20,424.59
CODES ENFORCEMENT	GENERAL OPERATING	O'REILLY AUTO PARTS	ALTERNATOR, CORE CHARGE, D	211.32
			ALTERNATOR & CORE RETURN	187.34-
		FIRST OPTION BANK	LICENSE FOR ANIMAL POUND	335.00
			HOTEL STAY BEAUDRY CODES	111.38
			FINGERPRINT PAD	22.80
			RULER	4.69
			RULES	14.74
			METER LID CONNECTORS FOR M	10.19
		FAMILY CENTER FARM & HOME	BOOT M MUDS ALL SEASON	99.99
		OSAWATOMIE PET CLINIC	5 PAOLA KITTENS	125.00
			EXAMINATION & EUTHANASIA	90.00
			EXAMINATIONS, BOARD, IMUNI	170.00
			EXAM, ALBON, KENNEL COUGH	54.00
			EXAM - DERAMAXX	45.00
		RURAL WATER DIST. #1	RURAL WATER SERVICE	18.15
			RURAL WATER SERVICE	112.90
		TRI-COUNTY ICE CO INC	CAR WASH TOKENS	31.00
		QUILL CORPORATION	CORK BOARD	42.32
			MARGIN TABS	27.84
		NEW CENTURY DODGE CHRYSLER JEE	NEW CENTURY DODGE CHRYSLER	319.00
			HOSE/TUBE OIL COOLER	185.80
		WEX BANK	FUEL	590.18
		WASTE MANAGEMENT	ROLL OFF DUMPSTER	469.25
			40YD OPEN TOP DUMPSTER	326.87
			40 YRD ROLLOFF	1,409.60
		GUARDIAN	GUARDIAN - 100821	9.32
			GUARDIAN 10/22 - PAYROLL	9.32
		HUMANA INSURANCE CO.	10/08 HUMANA INSURANCE	1,182.64
			10/08 HUMANA INSURANCE	49.16
			10/08 HUMANA INSURANCE	13.04
			10/22 - HUMANA INSURANCE	1,182.64
			10/22 - HUMANA INSURANCE	49.16
			10/22 - HUMANA INSURANCE	13.04
		KASPER AUTO PARTS	FUEL PRESSURE SENSOR	55.56
		KPERS	AFTER RETIREMENT	489.60
			KPERS - 10/08 - PAYROLL	530.61
			KPERS AFTER RETIREMENT	507.96
			KPERS - 10/22/21 PAYROLL	561.19
		VANTAGEPOINT TRANSFER	OCTOBER 2021 - ICMA 10/08	69.82
			OCTOBER 2021 - ICMA 10/22	37.90
		EFTPS	10/08/21 - PAYROLL TAXES	536.65
			10/22/21 - PAYROLL TAXES	567.76
		EVERGY	UTILITY BILL	<u>299.35</u>
			TOTAL:	10,804.40
POLICE	GENERAL OPERATING	CITY OF OSAWATOMIE	UTILITY BILLS	780.60
		O'REILLY AUTO PARTS	CAPSULE	17.65
			OESPECTRUM	230.90-
		FIRST OPTION BANK	LIGHT BULBS	12.00

DEPARTMENT	FUND	VENDOR NAME	DESCRIPTION	AMOUNT
			DUCT TAPE	5.25
			HANGING FILE FOLDERS	93.94
			DECK SCEWS & LUMBER	68.40
			LUMBER	8.50
			NAME BADGE	32.00
			BUSINESS CARDS	39.31
			PAINTERS TAPE & CAULK	46.52
			CPU INT PAINT WHITE GHEP	71.62
			TAX REFUND	4.54-
			TAX REFUND	3.33-
			KEY HOLDERS & ORGANIZERS	49.85
			UNIFORM TAPE	20.97
			WALNUT PLAQUE	56.47
			OFFICE SUPPLIES	86.16
			LIBRARY WITH DOORS	145.62
			UNIFORMS	71.99
			TAX REFUND	3.44-
			PAINTERS TAPE & PAINT SUPP	36.01
		KANSAS EMPLOYMENT SECURITY FUN	10/08/21 - UNEMPLOYMENT	8.76
			10/22 - UNEMPLOYMENT	10.09
		KANSAS GAS SERVICE	GAS SERVICE	34.75
		TRI-COUNTY ICE CO INC	CAR WASH TOKENS	145.00
		SUDDENLINK COMMUNICATIONS	CABLE SERVIICES	14.86
		PSYCHOLOGICAL RESOURCES	PSYCHOLOGICAL EVALUATION	135.00
		GALL'S INC	LONG SLEEVE TWILL, CARGO P	130.00
			TWILL CARGO PANT	165.75
			LAWPRO SNAKE CHAIN WHISTLE	10.55
			CASES, MOUNT, BELT, SCARRB	573.19
			XT DF DUTY LIGHT	123.84
			MENS LONG SLEEVE TWILL	55.25
			511 TACTICAL UNIFORM	153.00
			LONG SLEEVE TWILL	55.25
			BUCKLE, BELT, CASE,	294.63
		MISCELLANEOUS MULTIPLICITY, LLC	MULTIPLICITY, LLC:WRECK OU	150.00
		ACE PEST CONTROL LLC GARY COOPER	PEST CONTROL SERVICES	80.00
		REDWOOD TOXICOLOGY LABORATORY	8-COC/THC/OPI - BEAKER	160.50
		WEX BANK	FUEL	2,137.98
		WASTE MANAGEMENT	REFUSE - PD	19.71
		GUARDIAN	GUARDIAN - 100821	30.29
			GUARDIAN 10/22 - PAYROLL	30.29
		HUMANA INSURANCE CO.	10/08 HUMANA INSURANCE	3,502.84
			10/08 HUMANA INSURANCE	233.19
			10/08 HUMANA INSURANCE	42.94
			10/22 - HUMANA INSURANCE	3,502.84
			10/22 - HUMANA INSURANCE	233.19
			10/22 - HUMANA INSURANCE	42.94
		KASPER AUTO PARTS	RADIATOR CAP	5.29
			DRIVESHAFT COUPLER	114.65
			DRIVESHAFT COUPLER	114.65-
		FAMILY MEDICINE CLINICS OF MCMC	PRE-EMPLOYMENT PHYSICALS	161.00
		KPERS	KPERS - 10/08 - PAYROLL	2,441.67
			KPERS - 10/22/21 PAYROLL	2,461.35
			KPERS - 10/22/21 PAYROLL	2,872.58-
		VANTAGEPOINT TRANSFER	OCTOBER 2021 - ICMA 10/08	18.75
			OCTOBER 2021 - ICMA 10/22	18.75
		EFTPS	10/08/21 - PAYROLL TAXES	1,883.64

DEPARTMENT	FUND	VENDOR NAME	DESCRIPTION	AMOUNT
			10/22/21 - PAYROLL TAXES	1,999.15
		REDISHRED KANSAS INC.	SHREDDING SERVICE	30.00
		AUTOZONE STORE 1632	STRUTS	<u>272.25</u>
			TOTAL:	19,896.55
CABIN	GENERAL OPERATING	CITY OF OSAWATOMIE	UTILITY BILLS	335.55
		KANSAS GAS SERVICE	GAS SERVICE	50.51
		ACE PEST CONTROL LLC GARY COOPER	PEST CONTROL SERVICES	45.00
		GUARDIAN	GUARDIAN - 100821	2.33
			GUARDIAN 10/22 - PAYROLL	2.33
		HUMANA INSURANCE CO.	10/08 HUMANA INSURANCE	386.95
			10/08 HUMANA INSURANCE	15.80
			10/08 HUMANA INSURANCE	4.19
			10/22 - HUMANA INSURANCE	386.95
			10/22 - HUMANA INSURANCE	15.80
			10/22 - HUMANA INSURANCE	4.19
		EFTPS	10/08/21 - PAYROLL TAXES	109.27
			10/22/21 - PAYROLL TAXES	<u>106.31</u>
			TOTAL:	1,465.18
STREETS & ALLEYS	GENERAL OPERATING	CITY OF OSAWATOMIE	UTILITY BILLS	2.00
			UTILITY BILLS	194.14
			UTILITY BILLS	480.98
		FIRST OPTION BANK	BREAKAWAY BARRICADES	1,604.59
		FAMILY CENTER FARM & HOME	NUTS, BOLTS, MISC HARDWARE	15.07
			TEST CLAMP	3.49
		KANSAS EMPLOYMENT SECURITY FUN	10/08/21 - UNEMPLOYMENT	2.20
			10/22 - UNEMPLOYMENT	2.09
		KANSAS GAS SERVICE	GAS SERVICE	49.88
		NATIONAL SIGN COMPANY INC	SIGN POSTS & BOLTS	4,280.90
			YIELD TRI, OBJECT MARKERS,	15.75
			MARKING PAINT	84.95
		WESTFALL GMC TRUCK INC	ADJUSTER	104.43
			BOLT	17.05
		WEX BANK	FUEL	628.40
		WASTE MANAGEMENT	REFUSE SERVICES	69.68
		GUARDIAN	GUARDIAN - 100821	11.65
			GUARDIAN 10/22 - PAYROLL	11.65
		HUMANA INSURANCE CO.	10/08 HUMANA INSURANCE	1,116.37
			10/08 HUMANA INSURANCE	49.95
			10/08 HUMANA INSURANCE	11.27
			10/22 - HUMANA INSURANCE	1,116.37
			10/22 - HUMANA INSURANCE	49.95
			10/22 - HUMANA INSURANCE	11.27
		KASPER AUTO PARTS	TRAILER WIRE	15.15
			ABRASIVE WHEEL, RED ENG	29.97
		KPERS	KPERS - 10/08 - PAYROLL	1,095.51
			KPERS - 10/22/21 PAYROLL	1,138.29
		EFTPS	10/08/21 - PAYROLL TAXES	389.42
			10/22/21 - PAYROLL TAXES	404.08
		E. EDWARDS, INC.	TALL BRITE LIME	84.99
		CAPITAL ONE TRADE CREDIT - NORTHERN TO	TOOL BOX FOR # 12	<u>449.99</u>
			TOTAL:	13,541.48
PARKS & CEMETERIES	GENERAL OPERATING	BREWER'S AUTOMOTIVE REPAIR INC	TIRE DISPOSAL	104.00
		CITY OF OSAWATOMIE	UTILITY BILLS	2.00

DEPARTMENT	FUND	VENDOR NAME	DESCRIPTION	AMOUNT
			UTILITY BILLS	194.13
			UTILITY BILLS	58.51
		KANSAS CITY WILBERT SI FUNERAL SERVIC	GRAVE OPENINGS	1,540.00
		FAMILY CENTER FARM & HOME	BIT PERCUSSION, NUTS, BOLT	21.98
			BIT PERCUSSION, NUTS, BOLT	61.99
			BINDER, THREADLOCKER, NUTS	120.32
			PARTS, ADAPTERS, SPRAYERS	62.53
			PARTS, ADAPTERS, SPRAYERS	17.99
		KANSAS EMPLOYMENT SECURITY FUN	10/08/21 - UNEMPLOYMENT	1.57
			10/22 - UNEMPLOYMENT	1.29
		MIAMI LUMBER INC.	MCQ TREATED, PRIME TREATED	85.76
			MCQ TREATED	35.90
		RURAL WATER DIST. #1	RURAL WATER SERVICE	18.00
		TRI-COUNTY ICE CO INC	CAR WASH TOKENS	12.00
		BOWES AUTOMOTIVE PRODUCTS	OIL FILTERS & STEMS	91.55
		MADDEN RENTAL LLOYD MADDEN	PORTABLE TOILETS	260.00
			PORTABLE TOILETS	80.00
		ROMANS OUTDOOR POWER	BOLT, NUT, FLANGE, CAP	58.02
			BOLT, NUT, WASHER, BELT, G	189.61
		WEX BANK	FUEL	413.97
		WASTE MANAGEMENT	REFUSE SERVICES	69.68
		PALACE HARDWARE	NUTS, BOLTS, SCEWS, MISC	4.99
		GUARDIAN	GUARDIAN - 100821	6.99
			GUARDIAN 10/22 - PAYROLL	6.99
		HUMANA INSURANCE CO.	10/08 HUMANA INSURANCE	657.56
			10/08 HUMANA INSURANCE	30.64
			10/08 HUMANA INSURANCE	9.41
			10/22 - HUMANA INSURANCE	657.56
			10/22 - HUMANA INSURANCE	30.64
			10/22 - HUMANA INSURANCE	9.41
		KASPER AUTO PARTS	HEAT SHRINK TUBING	16.58
			ABRASIVE WHEEL, RED ENG	12.14
			HEAT SHRINK TUBING	19.90
			PWR SERV - POWER SERVICE D	136.43
		FAMILY MEDICINE CLINICS OF MCMC	PRE-EMPLOYMENT PHYSICALS	47.00
		KPERS	KPERS - 10/08 - PAYROLL	129.29
			KPERS - 10/22/21 PAYROLL	129.29
		EFTPS	10/08/21 - PAYROLL TAXES	297.40
			10/22/21 - PAYROLL TAXES	284.91
		CCL SUPPLY, LLC	ZEP ROUND ONE, ACCLAIM, GR	344.00
		EVERGY	UTILITY BILL	<u>26.43</u>
			TOTAL:	6,358.36
FIRE	GENERAL OPERATING	CITY OF OSAWATOMIE	UTILITY BILLS	507.79
		FIRST OPTION BANK	MOP & MOP BUCKET	80.87
		KANSAS EMPLOYMENT SECURITY FUN	10/22 - UNEMPLOYMENT	10.27
		KANSAS GAS SERVICE	GAS SERVICE	49.88
		ACE PEST CONTROL LLC GARY COOPER	PEST CONTROL SERVICES	62.50
		WEX BANK	FUEL	64.84
		WASTE MANAGEMENT	REFUSE SERVICES	278.71
		EFTPS	10/22/21 - PAYROLL TAXES	<u>399.31</u>
			TOTAL:	1,454.17
MUNICIPAL COURT	GENERAL OPERATING	KANSAS STATE TREASURER	MUNICIPAL COURT REVENUE -	1,335.50
		MIAMI COUNTY SHERIFF'S DEPT	SEPT 2021 - PRISONER CARE	3,341.30
			AUG 2021 - PRISONER CARE	2,195.81

DEPARTMENT	FUND	VENDOR NAME	DESCRIPTION	AMOUNT
		LAW OFFICE OF SHEILA M.SCHULTZ	MUNICIPAL COURT OCTOBER 20	2,060.00
		GUARDIAN	GUARDIAN - 100821	2.33
			GUARDIAN 10/22 - PAYROLL	2.33
		HUMANA INSURANCE CO.	10/08 HUMANA INSURANCE	349.50
			10/08 HUMANA INSURANCE	8.78
			10/08 HUMANA INSURANCE	4.01
			10/22 - HUMANA INSURANCE	349.50
			10/22 - HUMANA INSURANCE	8.78
			10/22 - HUMANA INSURANCE	4.01
		KPERS	KPERS - 10/08 - PAYROLL	187.88
			KPERS - 10/22/21 PAYROLL	169.05
		EFTPS	10/08/21 - PAYROLL TAXES	144.14
			10/22/21 - PAYROLL TAXES	127.90
		HARTLEY LAW GROUP, LLC	SEPT & OCT COURT APTS	<u>2,975.00</u>
			TOTAL:	13,265.82
LEVEES & STORMWATER	GENERAL OPERATING	CITY OF OSAWATOMIE	UTILITY BILLS	<u>7.50</u>
			TOTAL:	7.50
LIBRARY	GENERAL OPERATING	CITY OF OSAWATOMIE	UTILITY BILLS	131.41
		FIRST OPTION BANK	BOOKS	7.99
			BOOKS	15.90
			BOOKS	10.04
			WHITE PERMANENT VINYL ROLL	5.99
			BOOKS	23.54
			CRAFT SUPPLIES	56.01
			SILHOUETTE CAMEO BLADE	17.75
			BOOKS	10.22
			BOOKS	15.37
			BOOKS	7.95
			BOOKS	16.68
			CRAFT SUPPLIES	24.98
			CUTTING BLADES FOR TRIMMER	29.99
			DVD	19.99
			TISSUE PAPER & PLATES	3.00
			PAPER MACHE LETTERS	77.34
			ARTSKILLS WOOD DOWEL	1.75
			DVD	2.00-
			LAMINATING POUCHES	29.99
			HOBBIT TRILOGY DVDS	9.96
			CRAFT SUPPLIES	51.92
			DVD	19.99
		KANSAS EMPLOYMENT SECURITY FUN	10/08/21 - UNEMPLOYMENT	2.68
			10/22 - UNEMPLOYMENT	2.32
		KANSAS GAS SERVICE	GAS SERVICE	38.36
		BAKER & TAYLOR	BOOKS	95.16
			BOOKS	163.65
			BOOKS	182.03
		WAL-MART CAPITAL ONE	CRAFTS AND LIBRARY SUPPLIE	62.58
			LIBRARY OFFICE SUPPLIES	1.97
		ACE PEST CONTROL LLC GARY COOPER	PEST CONTROL SERVICES	45.00
		WASTE MANAGEMENT	REFUSE SERVICES	61.68
		KWIKOM COMMUNICATIONS	WIRELESS INTERNET	150.46
		GUARDIAN	GUARDIAN - 100821	4.66
			GUARDIAN 10/22 - PAYROLL	4.66
		HUMANA INSURANCE CO.	10/08 HUMANA INSURANCE	203.20

DEPARTMENT	FUND	VENDOR NAME	DESCRIPTION	AMOUNT
			10/08 HUMANA INSURANCE	8.78
			10/08 HUMANA INSURANCE	4.66
			10/22 - HUMANA INSURANCE	203.20
			10/22 - HUMANA INSURANCE	8.78
			10/22 - HUMANA INSURANCE	4.66
		KPERS	KPERS - 10/08 - PAYROLL	357.95
			KPERS - 10/22/21 PAYROLL	341.01
		EFTPS	10/08/21 - PAYROLL TAXES	341.12
			10/22/21 - PAYROLL TAXES	327.55
		RICOH USA, INC.	COPIES	198.67
		ROMERO, AURORAH	LIBRARY JANITOR	60.00
		ASSOCIATION FOR RURAL & SMALL LIBRARIE	MEMBERSHIP RENEWAL	15.00
		INGRAM LIBRARY SERVICES	LIBRARIANS JOURNEY	14.29
			AMER GODS V01 SHADOWS V PU	<u>32.43</u>
			TOTAL:	3,522.27
TECHNOLOGY	GENERAL OPERATING	FIRST OPTION BANK	WEBSITE SERVICE	39.00
			WEBSITE HOSTING BACKUP SER	8.95
			USB CABLES AND BELT CLIP P	26.98
			SPAM FILTER SERVICE FOR CH	96.00
			PHONE CASE FOR ELECTRIC WA	15.15
			WEBSITE HOSTING	61.00
			WINDOWS FOR PD	108.17
			MONTHLY CAMERA FEES	15.95
			VARIOUS CABLES FOR IT	34.62
		VERIZON WIRELESS	PHONE & INTERNET	836.31
		SHI INTERNATIONAL CORP	BENQ GW2480 MONITOR	2,012.78
			LASER PRINTER	581.76
			TRAY CONNECTOR	36.90
			TONER & PAPER TRAY	1,116.78
			TONER & PAPER TRAY	233.32
			GOOGLE WORKSPACE ENT	18,510.48
		KSFIBERNET	PHONE & INTERNET @ CITY HA	410.84
		KWIKOM COMMUNICATIONS	INTERNET	245.00
		RICOH USA, INC.	COPIER LEASE	128.31
			COPIER LEASE	134.73
		NITEL, INC.	INTERNET	1,194.68
		NEXTIVA, INC.	PHONE & INTERNET	1,002.36
			PHONE LINE FOR DCM	18.36
		ZOHO CORPORATION	MDM SERVER	1,095.00
			MDM SERVER	<u>109.00-</u>
			TOTAL:	27,854.43
WATER ADMINISTRATION	WATER	KANSAS DEPT OF REVENUE	CLEAN DRINKING WATER FEES	3,232.59
		WASTE MANAGEMENT	REFUSE SERVICES	69.68
		POSTALOCITY.COM	POSTAGE	<u>900.00</u>
			TOTAL:	4,202.27
WATER TREATMENT	WATER	CITY OF OSAWATOMIE	UTILITY BILLS	9,831.89
			UTILITY BILLS	140.29
		FIRST OPTION BANK	WATER TREATMENT PLANT COUR	161.00
			GRINDING WHEEL & TOOL	151.43
			ICE MACHINE	47.19
			WATER TREATMENT PLANT COUR	169.00
			MILWAUKEE PEN LIGHT	59.91
			WATER TREATMENT PLANT	118.00



DEPARTMENT	FUND	VENDOR NAME	DESCRIPTION	AMOUNT
			WATER TREATMENT PLANT	453.00
			HOODIES FOR POWER PLANT	52.97
		FAMILY CENTER FARM & HOME	CONDUIT, SCREWDRIVER, DUPL	85.80
			FUEL VP & BOILER DRAIN	22.88
		KANSAS EMPLOYMENT SECURITY FUN	10/08/21 - UNEMPLOYMENT	6.56
			10/22 - UNEMPLOYMENT	6.87
		MIAMI LUMBER INC.	PINK STYROFOAM	17.00
		MIAMI COUNTY HEALTH DEPT.	HEP B VACCINATIONS	130.00
		WAL-MART CAPITAL ONE	CLEANING SUPPLIES	59.14
			HELIX & CHAIR	87.64
		PAOLA DO IT BEST HARDWARE	MISC HARDWARE	9.60
			MISC HARDWARE	3.00
			CONNECTOR, BUSHING, SPOUT,	79.13
			MIL AC COVER	35.97
		MISCELLANEOUS STEVE'S AUTO TRIM	STEVE'S AUTO TRIM: REPAIR	375.00
		USA BLUE BOOK	GLOVES & FIRST MATE VEST	45.90
			GLOVES & SMOKE LENS	93.95
			FIRST MATE, FLOTATION VEST	139.95
			GLOVES & SMOKE LENS	12.12
			CLEAR BRAID PVC HOSE	96.59
			GLOVES	27.14
		AMERICAN TEXTILE MILLS	COLOR T-SHIRT WIPERS, NU-W	118.46
		BRADLEY AIR CONDITIONING & HEATING	GAS LINE REPLACED & REPAIR	464.94
		HAWKINS INC	ACTIVATED CARBON & AZONE	2,169.02
			Ammonia	705.93
			Polymer	3,129.98
			Flouride	293.16
		GERKEN RENT-ALL INC	PROPANE FILL	16.50
		WASTE MANAGEMENT	REFUSE SERVICES	35.49
		GUARDIAN	GUARDIAN - 100821	9.32
			GUARDIAN 10/22 - PAYROLL	9.32
		HUMANA INSURANCE CO.	10/08 HUMANA INSURANCE	848.11
			10/08 HUMANA INSURANCE	35.10
			10/08 HUMANA INSURANCE	9.41
			10/22 - HUMANA INSURANCE	848.11
			10/22 - HUMANA INSURANCE	35.10
			10/22 - HUMANA INSURANCE	9.41
		KASPER AUTO PARTS	IGNITION LOCK CYLINDER	56.91
			TUMBLER AND KEY LOCK	56.91-
		KPERS	AFTER RETIREMENT	51.74
			KPERS - 10/08 - PAYROLL	753.66
			KPERS AFTER RETIREMENT	32.57
			KPERS - 10/22/21 PAYROLL	632.76
		VANTAGEPOINT TRANSFER	OCTOBER 2021 - ICMA 10/08	26.11
			OCTOBER 2021 - ICMA 10/22	27.74
		EFTPS	10/08/21 - PAYROLL TAXES	537.43
			10/22/21 - PAYROLL TAXES	531.18
		CCL SUPPLY, LLC	ZEP CLEANER & DISINFECTANT	582.00
			STARTER BOX	6.82
		R. E. PEDROTTI CO., INC.	PROGRAMMING ENGINEER	430.20
		KANSAS HEALTH & ENVIRONMENTAL LABORATO	COLILERT DRINKING WATER	726.00
		KEY	POCKET SHIRTS	72.45
			TOTAL:	25,666.94
WATER DISTRIBUTION	WATER	CITY OF OSAWATOMIE	UTILITY BILLS	2.00
			UTILITY BILLS	30.49

DEPARTMENT	FUND	VENDOR NAME	DESCRIPTION	AMOUNT	
		FIRST OPTION BANK	DRY ERASE BOARD AND MARKER	34.99	
		FAMILY CENTER FARM & HOME	SPRAYER 5GAL BACKPACK	135.00	
			COMPRESSOR GAUGE, HEX BRUS	16.78	
			HYDRANT FROST PROOF 3FT	113.99	
			TAPE RULE MAX STEEL 1"X25'	11.99	
		DITCH WITCH SALES INC	DIRECT CONNECT CARRY BAG	247.43	
		SMITTY'S LAWN & GARDEN EQUIP	GASKET	3.52	
			GASKET, RUBBE, TUBE, GROMM	86.25	
		DONNA & VIOLA'S SHIRTS & ETC.	POLOS	174.90	
		WEX BANK	FUEL	360.37	
		CORE & MAIN LP	10X20 REP CLP	1,409.92	
			10X30 REP CLP CLAMPS	1,498.94	
			REP CLPS & CLAMPS	348.21	
			EPOXY - SADDLE STRAPS	249.36	
			SWIVEL & NUT ASSY FOR SETT	167.16	
			CLAMPS REP CLP	348.21	
			10X12-1/2 REP CLAMPS	493.66	
			10X20 REP CLP CLAMPS	704.96	
			ACCU 5/8 TRPL 6' 100G SM	108.00	
		GUARDIAN	GUARDIAN - 100821	4.66	
			GUARDIAN 10/22 - PAYROLL	4.66	
		HUMANA INSURANCE CO.	10/08 HUMANA INSURANCE	620.99	
			10/08 HUMANA INSURANCE	27.63	
			10/08 HUMANA INSURANCE	5.93	
			10/22 - HUMANA INSURANCE	620.99	
			10/22 - HUMANA INSURANCE	27.63	
			10/22 - HUMANA INSURANCE	5.93	
		KASPER AUTO PARTS	PROSELECT CABIN	13.68	
		KPERS	KPERS - 10/08 - PAYROLL	276.27	
			KPERS - 10/22/21 PAYROLL	366.65	
		EFTPS	10/08/21 - PAYROLL TAXES	422.25	
			10/22/21 - PAYROLL TAXES	362.06	
		OZARK READY MIX COMPANY	FLOWABLE FILL HAUL	440.00	
			FLOWABLE FILL & HAUL	<u>814.50</u>	
			TOTAL:	10,559.96	
NON-DEPARTMENTAL	ELECTRIC	MISCELLANEOUS	BATES, JEROMY	01-055900-21	126.65
			SINGER, CHARLCEY	01-081800-29	100.38
			TOBUREN, CHRISTOPHER	01-160300-05	1,109.48
			BOEHM, CRYSTAL	01-243100-21	306.65
			RHOADES, CLARISSA	01-060100-17	29.18
			HORNBACK, TRACI	01-065600-19	316.09
			PETERS, KIM	01-065800-11	588.70
			RAY, MICHELLE	01-066000-11	735.88
			GELLIS, JOYCE	01-083500-03	324.31
			RAZO, DAVID	01-159500-12	718.13
			TOBUREN, CHRISTOPHER	01-160300-05	1,324.58
			NELSON, KRYSTAL	01-164400-28	855.80
			MANNING, TIFFANY	01-193900-27	810.51
			VICKERS, DANNY	01-238900-04	1,471.75
			KEAST, TABITHA	01-239700-13	133.87
			WHEELER, SARA	01-000600-26	594.09
		ADCOMP SYSTEMS, INC.	TECHNOLOGY FEE	<u>63.50</u>	
			TOTAL:	9,609.55	
ELECTRIC ADMINISTRATIO	ELECTRIC	KANSAS DEPT OF REVENUE	SEPT 2021- SALES TAX UTILI	167.90	

DEPARTMENT	FUND	VENDOR NAME	DESCRIPTION	AMOUNT
			SEPT 2021- SALES TAX UTILI	4,487.52
			SEPT 2021- SALES TAX UTILI	5,385.02
			SEPT 2021- SALES TAX UTILI	5,647.73
			PREPAID	468.78
			SEPT 2021 - SALES TAX COMP	115.21
		KANSAS MUNICIPAL UTILITIES INC	KMU REGIONAL TRAINING GROU	2,656.00
		ACE PEST CONTROL LLC GARY COOPER	PEST CONTROL SERVICES	37.50
		POSTALOCITY.COM	POSTAGE	<u>2,600.00</u>
			TOTAL:	21,565.66
ELECTRIC PRODUCTION	ELECTRIC	FIRST OPTION BANK	GRINDING WHEEL & TOOL	151.42
			ICE MACHINE	47.19
			MILWAUKEE PEN LIGHT	59.91
			HOODIES FOR POWER PLANY	52.97
		FAMILY CENTER FARM & HOME	BOOT-14"	12.99
		KANSAS EMPLOYMENT SECURITY FUN	10/08/21 - UNEMPLOYMENT	0.68
			10/22 - UNEMPLOYMENT	0.76
		KMEA	EMP1 - SEPTEMBER 2021	15,805.71
			EMP1 - SEPTEMBER 2021	16,232.69
			GRDA OCTOBER 2021	84,560.94
			SPA HYDRO AUGUST 2021	3,148.53
			WAPA HYDRO SEPTEMBER 2021	7,240.34
		KANSAS GAS SERVICE	GAS SERVICE	31.15
			GAS SERVICE	82.70
		TRI-COUNTY ICE CO INC	CAR WASH TOKENS	12.00
		USA BLUE BOOK	GLOVES, SMOKE LENS	15.18
			GLOVES & SMOKE LENS	12.13
			GLOVES	27.14
		AMERICAN TEXTILE MILLS	COLOR T-SHIRT WIPERS, NU-W	118.46
		BRADLEY AIR CONDITIONING & HEATING	REPLACE FAN, TEST, REPLACE	528.70
		WEX BANK	FUEL	144.67
		WASTE MANAGEMENT	REFUSE SERVICES	69.68
			REFUSE SERVICES	35.49
		PALACE HARDWARE	NUTS, BOLTS, SCREWS	9.99
		HUMANA INSURANCE CO.	10/08 HUMANA INSURANCE	214.96
			10/08 HUMANA INSURANCE	8.80
			10/08 HUMANA INSURANCE	2.35
			10/22 - HUMANA INSURANCE	214.96
			10/22 - HUMANA INSURANCE	8.80
			10/22 - HUMANA INSURANCE	2.35
		KPERS	AFTER RETIREMENT	51.74
			KPERS AFTER RETIREMENT	32.57
		VANTAGEPOINT TRANSFER	OCTOBER 2021 - ICMA 10/08	7.50
			OCTOBER 2021 - ICMA 10/22	52.50
		EFTPS	10/08/21 - PAYROLL TAXES	121.37
			10/22/21 - PAYROLL TAXES	118.19
		CCL SUPPLY, LLC	ABC BUG OFF	184.00
			STARTER BOX	6.82
		EVERGY	UTILITY BILL	26.85
			UTILITY BILL	26.20
		KEY	POCKET SHIRTS	<u>72.45</u>
			TOTAL:	129,553.83
ELECTRIC DISTRIBUTION	ELECTRIC	BREWER'S AUTOMOTIVE REPAIR INC	INTERSTATE BATTERY	141.95
		CITY OF OSAWATOMIE	UTILITY BILLS	139.91
			UTILITY BILLS	30.49

DEPARTMENT	FUND	VENDOR NAME	DESCRIPTION	AMOUNT
		FIRST OPTION BANK	DRY ERASE BOARD AND MARKER	34.99
			LOAD CENTER & CIRCUIT BREAK	87.96
		KANSAS EMPLOYMENT SECURITY FUN	10/08/21 - UNEMPLOYMENT	3.36
			10/22 - UNEMPLOYMENT	3.39
		QUALITY TREE SERVICE ALLEN BOYD	TRIM ELM TREE OFF SERVICE	300.00
		PAOLA DO IT BEST HARDWARE	PVC ELBOW	50.97
			90 DEGREE PVC ELBOW	62.94
		ALTEC INDUSTRIES INC	REPAIR BOOM AFTER ACCIDENT	471.45
		WEX BANK	FUEL	519.88
		ANIXTER INC	WIRE 4, ELBOW, BRACKET EQU	399.25
			ELBOW, CLDSHRINK, NEUTRAL	653.90
			ELBOW ARR, BRKT INSU, NEUT	183.60
			WIRE 4 CU SOL 250' RL 5KV	725.00
			GLOVES	216.50
		PALACE HARDWARE	EXPRESS SHIPPING	26.25
		GUARDIAN	GUARDIAN - 100821	9.32
			GUARDIAN 10/22 - PAYROLL	9.32
		HUMANA INSURANCE CO.	10/08 HUMANA INSURANCE	1,686.11
			10/08 HUMANA INSURANCE	88.85
			10/08 HUMANA INSURANCE	20.42
			10/22 - HUMANA INSURANCE	1,686.11
			10/22 - HUMANA INSURANCE	88.85
			10/22 - HUMANA INSURANCE	20.42
		KASPER AUTO PARTS	NAPAGOLD OIL FILTER	25.10
			CABIN AIR FILTER	13.68
		KPERS	KPERS - 10/08 - PAYROLL	1,150.70
			KPERS - 10/22/21 PAYROLL	1,254.47
		VANTAGEPOINT TRANSFER	OCTOBER 2021 - ICMA 10/08	53.32
			OCTOBER 2021 - ICMA 10/22	12.50
		EFTPS	10/08/21 - PAYROLL TAXES	927.42
			10/22/21 - PAYROLL TAXES	<u>1,017.24</u>
			TOTAL:	12,115.62
SEWER ADMINISTRATION	SEWER	BG CONSULTANTS INC	WASTEWATER COLLECTION SYST	874.00
		HUMANA INSURANCE CO.	10/08 HUMANA INSURANCE	218.65
			10/08 HUMANA INSURANCE	9.23
			10/08 HUMANA INSURANCE	1.98
			10/22 - HUMANA INSURANCE	218.65
			10/22 - HUMANA INSURANCE	9.23
			10/22 - HUMANA INSURANCE	1.98
		EFTPS	10/08/21 - PAYROLL TAXES	128.03
			10/22/21 - PAYROLL TAXES	135.26
		POSTALCITY.COM	POSTAGE	<u>500.00</u>
			TOTAL:	2,097.01
WWTP OPERATIONS	SEWER	CITY OF OSAWATOMIE	UTILITY BILLS	55.85
		G.K. SMITH & SONS INC	12X24X2 PLEATED FILTER CAS	221.40
		GENERATOR SERVICES INC	SEMI ANNUAL INSPECTION	825.00
		PACE ANALYTICAL SERVICES INC	ANALYTICAL SERVICES	400.00
		HAWKINS INC	AQUA HAWK 1124	1,082.84
		WASTE MANAGEMENT	SLUDGE HAUL OFF	1,614.35
			REFUSE SERVICES	70.98
			SLUDGE HAUL OFF	2,738.44
		GUARDIAN	GUARDIAN - 100821	2.33
			GUARDIAN 10/22 - PAYROLL	2.33
		HUMANA INSURANCE CO.	10/08 HUMANA INSURANCE	386.95

DEPARTMENT	FUND	VENDOR NAME	DESCRIPTION	AMOUNT
			10/08 HUMANA INSURANCE	15.80
			10/08 HUMANA INSURANCE	4.19
			10/22 - HUMANA INSURANCE	386.95
			10/22 - HUMANA INSURANCE	15.80
			10/22 - HUMANA INSURANCE	4.19
		KASPER AUTO PARTS	FHP BELT	29.10
		KPERS	KPERS - 10/08 - PAYROLL	201.07
			KPERS - 10/22/21 PAYROLL	204.62
		EFTPS	10/08/21 - PAYROLL TAXES	157.87
			10/22/21 - PAYROLL TAXES	160.93
		ZIMA CORPORATION	SENSOR, INDUCTIVE PROX 30M	<u>236.69</u>
			TOTAL:	8,817.68
SEWER COLLECTION	SEWER	CITY OF OSAWATOMIE	UTILITY BILLS	2.00
			UTILITY BILLS	30.49
			UTILITY BILLS	563.85
		WEX BANK	FUEL	275.52
		HUMANA INSURANCE CO.	10/08 HUMANA INSURANCE	280.41
			10/08 HUMANA INSURANCE	13.14
			10/08 HUMANA INSURANCE	3.01
			10/22 - HUMANA INSURANCE	280.41
			10/22 - HUMANA INSURANCE	13.14
			10/22 - HUMANA INSURANCE	3.01
		KPERS	KPERS - 10/08 - PAYROLL	185.75
			KPERS - 10/22/21 PAYROLL	189.30
		EFTPS	10/08/21 - PAYROLL TAXES	106.36
			10/22/21 - PAYROLL TAXES	145.34
		LLOYD HAROLD	SERVICE CALL 8TH ST LIFT S	320.00
			SERVICE CALL - 8TH ST PUMP	<u>325.00</u>
			TOTAL:	2,736.73
NON-DEPARTMENTAL	REFUSE	WASTE MANAGEMENT	CURB SIDE PICKUP	30,482.85
			TRASH STICKERS FOR RESALE	<u>270.00</u>
			TOTAL:	30,752.85
LIBRARY	LIBRARY	FIRST OPTION BANK	EBIKE CONVERSION KIT	<u>354.99</u>
			TOTAL:	354.99
NON-DEPARTMENTAL	INDUSTRIAL PROMOTI	PAT'S SIGNS	RENT	<u>1,100.00</u>
			TOTAL:	1,100.00
NON-DEPARTMENTAL	INDUSTRIAL PROMOTI	ALLENBRAND-DREWS & ASSOC., INC	FIE;D TRACT SURVEY - BETHE	1,860.00
			HICKORY VALLEY # 1 - BOUND	<u>1,200.00</u>
			TOTAL:	3,060.00
PARKS & CEMETERIES	SPECIAL PARK & REC	MADDEN RENTAL LLOYD MADDEN	PORTABLE TOILETS	<u>110.00</u>
			TOTAL:	110.00
STREET AND ALLEYS	STREET IMPROVEMENT	KILLOUGH CONSTRUCTION INC	PLANT MIX	1,434.69
			PLANT MIX	930.81
			PLANT MIX 10/18	233.13
			PLANT MIX 10/26	459.99
		SUPERIOR BOWEN ASPHALT CO. INC	OP FRAP INTERM	<u>292.50</u>
			TOTAL:	3,351.12
CABIN	TOURISM	FIRST OPTION BANK	FREEDOM FEST PERFORMER	496.80

DEPARTMENT	FUND	VENDOR NAME	DESCRIPTION	AMOUNT
		KANSAS GAS SERVICE	GAS SERVICE	31.15
		PAT'S SIGNS	KIOSK AT TRAIL SIGNS	1,776.00
		ACE PEST CONTROL LLC GARY COOPER	PEST CONTROL SERVICES	37.50
		NPG NEWSPAPERS INC	FREEDOM FEST ADVERTISING	376.00
		WASTE MANAGEMENT	REFUSE SERVICES	53.89
		WINGERT SIGN COMPANY LLC	BILLBOARD RENTAL	550.00
		MOSCA DESIGN	Christmas Decorations	<u>24,415.78</u>
			TOTAL:	27,737.12
FIRE	PUBLIC SAFETY EQUI	FIRST OPTION BANK	FIRE TRUCK/SOFTWARE PAYMEN	15,865.42
			FIRE TRUCK/SOFTWARE PAYMEN	4,117.11
		QUILL CORPORATION	MESH OFFICE CHAIRS	826.26
		CITY ELECTRICAL SUPPLY COMPANY	14'' LED HI-BAY 134W COMPA	2,300.00
		WASTE MANAGEMENT	DUMP LOAD - FIRE	<u>28.00</u>
			TOTAL:	23,136.79
COURSE OPERATIONS	GOLF COURSE	O'REILLY AUTO PARTS	A/TRANS SEAL	10.66
			A/TRANS SEAL & OIL SEAL	33.26
			OIL SEAL	43.92-
		FIRST OPTION BANK	GOLF COURSE LOAN INSTEREST	557.93
			VOLTAGE REGULATORS	94.00
		FAMILY CENTER FARM & HOME	MISC HARDWARE	7.68
			KEY	1.69
		KANSAS EMPLOYMENT SECURITY FUN	10/08/21 - UNEMPLOYMENT	5.69
			10/22 - UNEMPLOYMENT	6.12
		ATCO INTERNATIONAL	SCREEN & QUICKIES	289.70
		RURAL WATER DIST. #1	RURAL WATER SERVICE	115.81
		OIL PATCH PUMP & SUPPLY INC	CEMENT PVC, CAP PVC, COUPL	102.10
		PAOLA DO IT BEST HARDWARE	ALUMINUM CHANNEL & SCREWS	24.98
		TURFWERKS	SOLENOID, FIELD DECO, WIRE	724.57
		WINFIELD SOLUTIONS LLC	XZEMPLAR AGENCY	342.00
		ACE PEST CONTROL LLC GARY COOPER	PEST CONTROL SERVICES	62.50
		DONNA & VIOLA'S SHIRTS & ETC.	STAFF UNIFORMS	84.24
		M&M GOLF CARS LLC	M&M GOLF CARS LLC	581.00
		MADDEN RENTAL LLOYD MADDEN	PORTABLE TOILETS	85.00
		APPLIED MAINTENANCE SUPPLIES	NINJA ICE 7GA TERRY LINED	129.72
		REINDERS INC	MAP, SOP, & MICROWS 50LB	444.20
		GREATLIFE WARSAW LLC	CONSULTING FEE - OCTOBER 2	416.00
		MFA OIL COMPANY	FUEL	2,419.31
		HUMANA INSURANCE CO.	10/08 HUMANA INSURANCE	584.72
			10/08 HUMANA INSURANCE	28.45
			10/08 HUMANA INSURANCE	6.34
			10/22 - HUMANA INSURANCE	584.72
			10/22 - HUMANA INSURANCE	28.45
			10/22 - HUMANA INSURANCE	6.34
		KASPER AUTO PARTS	AIR FILTER	55.50
			OXYGEN SENSOR	185.51
			TRANSMISSION LINES	210.16-
			SOLENOID	87.64
		EFTPS	10/08/21 - PAYROLL TAXES	361.69
			10/22/21 - PAYROLL TAXES	381.02
		EVERGY	UTILITY BILL	18.14
			UTILITY BILL	47.45
			UTILITY BILL	114.46
			UTILITY BILL	419.96
			UTILITY BILL	1,264.59

DEPARTMENT	FUND	VENDOR NAME	DESCRIPTION	AMOUNT
		GREATLIFE LLC	EQUIPMENT LEASE	3,650.98
			EQUIPMENT LEASE	<u>971.93</u>
			TOTAL:	15,081.97
CLUB HOUSE	GOLF COURSE	FIRST OPTION BANK	PORK BUTT	31.77
			POTATO SALAD	39.68
			FORKS	2.98
			BULLSEYE BBQ	3.00
			CAN OPENER	4.00
			ICE BAGS	56.28
			STRAWS	27.78
		KANSAS DEPT OF REVENUE	SEPT 2021 - GOLF SALES TAX	262.35
			SEPT 2021 - GOLF SALES TAX	314.82
			SEPT 2021 - GOLF SALES TAX	1,364.19
		KANSAS EMPLOYMENT SECURITY FUN	10/08/21 - UNEMPLOYMENT	1.57
			10/22 - UNEMPLOYMENT	1.72
		WAL-MART CAPITAL ONE	CREDIT CARD MACHINE PAPER	29.22
			GLOVES	8.98
			FOOD FOR CLUB HOUSE SALES	461.01
			BEVERAGES FOR RESALE	19.06
			CUPS, PLATES, SUPPLIES	191.74
			OFFICE SUPPLIES	19.64
			CLEANING SUPPLIES	9.88
		CRAWFORD SALES COMPANY	BEER	207.90
		DISH NETWORK	DISH NETWORK	129.05
		DONNA & VIOLA'S SHIRTS & ETC.	GOLF TOWELS PRO SHOP	263.52
		WASTE MANAGEMENT	REFUSE SERVICES	112.56
		GUARDIAN	GUARDIAN - 100821	4.66
			GUARDIAN 10/22 - PAYROLL	4.66
		EFTPS	10/08/21 - PAYROLL TAXES	59.98
			10/22/21 - PAYROLL TAXES	65.51
		SRIXON / CLEVELAND GOLF / XXIO	BALL:SOFT FEEL	66.72
		ACUSHNET COMPANY	TILT PRO, PERMA SOFT PEARL	296.95
			TITL TOUR SOFT YELLOW	61.12
			TITL TRUFEEL YELLOW	<u>25.66</u>
			TOTAL:	4,147.96
WATER DISTRIBUTION	CIP -WATER	BG CONSULTANTS INC	MAIN ST TERR IMPROVEMENTS	<u>760.00</u>
			TOTAL:	760.00
SEWER ADMINISTRATION	CIP - SEWER	BG CONSULTANTS INC	WWTP IMPROVEMENTS	<u>14,720.00</u>
			TOTAL:	14,720.00
STREETS & ALLEYS	CIP - STREET PROJE	PRO SEAL INC	RECLAMITE APPLICATION	<u>22,389.81</u>
			TOTAL:	22,389.81
NON-DEPARTMENTAL	EMPLOYEE BENEFITS	CITY OF OSAWATOMIE	OCTOBER 2021 - FLEX SPENDI	668.92
			OCTOBER 2021 - FLEX SPENDI	667.88
			OCTOBER 2021 - FLEX SPENDI	668.92
			OCTOBER 2021 - FLEX SPENDI	667.88
		KANSAS DEPT OF REVENUE	10/08/21 - STATE TAX	3,885.05
			10/22/21 - STATE TAXES	4,382.52
		GUARDIAN	GUARDIAN - 100821	498.07
			GUARDIAN - 100821	238.60
			GUARDIAN 10/22 - PAYROLL	493.57
			GUARDIAN 10/22 - PAYROLL	225.60

DEPARTMENT	FUND	VENDOR NAME	DESCRIPTION	AMOUNT
			ADJUSTMENT TO MATCH BILL	733.85-
		HUMANA INSURANCE CO.	ADJUSTMENT TO MATCH BILL	2,142.72-
			10/08 HUMANA INSURANCE	6,781.52
			10/22 - HUMANA INSURANCE	6,781.52
		KANSAS PAYMENT CENTER	GARNISHMENTS	1,189.49
			GARNISHMENT	1,189.49
		KPERS	KPERS LIFE	116.83
			KPERS - 10/08 - PAYROLL	5,824.04
			KPERS - 10/22/21 PAYROLL	6,257.35
		VANTAGEPOINT TRANSFER	OCTOBER 2021 - ICMA 10/08	890.81
			OCTOBER 2021 - ICMA 10/22	1,107.89
		EFTPS	10/08/21 - PAYROLL TAXES	15,100.91
			10/22/21 - PAYROLL TAXES	17,348.55
		ATCHISON HOSPITAL ASSOCIATES	GARNISHMENT	312.16
			GARNISHMENT	<u>312.17</u>
			TOTAL:	72,733.17
NON-DEPARTMENTAL	EMPLOYEE BENEFITS	SURENCY LIFE & HEALTH	HRA/FSA OCTOBER 2021	<u>243.00</u>
			TOTAL:	243.00
NON-DEPARTMENTAL	TECHNOLOGY FUND -	FIRST OPTION BANK	FIRE TRUCK/SOFTWARE PAYMEN	29,199.82
			FIRE TRUCK/SOFTWARE PAYMEN	<u>3,319.37</u>
			TOTAL:	32,519.19

===== FUND TOTALS =====

01	GENERAL OPERATING	118,923.75
02	WATER	40,429.17
03	ELECTRIC	172,844.66
04	SEWER	13,651.42
05	REFUSE	30,752.85
06	LIBRARY	354.99
09	INDUSTRIAL PROMOTION	4,160.00
11	SPECIAL PARK & RECREATION	110.00
12	STREET IMPROVEMENTS	3,351.12
13	TOURISM	27,737.12
14	PUBLIC SAFETY EQUIPMENT	23,136.79
18	GOLF COURSE	19,229.93
22	CIP -WATER	760.00
24	CIP - SEWER	14,720.00
25	CIP - STREET PROJECT	22,389.81
31	EMPLOYEE BENEFITS	72,976.17
35	TECHNOLOGY FUND - CIP	32,519.19
-----		
	GRAND TOTAL:	598,046.97
-----		



SELECTION CRITERIA

-----  
SELECTION OPTIONS

VENDOR SET: 01-OSAWATOMIE KS  
VENDOR: All  
CLASSIFICATION: All  
BANK CODE: All  
ITEM DATE: 0/00/0000 THRU 99/99/9999  
ITEM AMOUNT: 99,999,999.00CR THRU 99,999,999.00  
GL POST DATE: 10/01/2021 THRU 10/31/2021  
CHECK DATE: 0/00/0000 THRU 99/99/9999  
-----

PAYROLL SELECTION

PAYROLL EXPENSES: NO  
EXPENSE TYPE: N/A  
CHECK DATE: 0/00/0000 THRU 99/99/9999  
-----

PRINT OPTIONS

PRINT DATE: None  
SEQUENCE: By Department  
DESCRIPTION: Distribution  
GL ACCTS: NO  
REPORT TITLE: C O U N C I L R E P O R T 2021-OCT  
SIGNATURE LINES: 0  
-----

PACKET OPTIONS

INCLUDE REFUNDS: YES  
INCLUDE OPEN ITEM:NO  
-----



City of Osawatomie

<b>ACTION ITEM SUMMARY</b>	Item Number:	5C
CMB Renewals	Date:	December 29,2021
Administration	From:	Mike Scanlon

**RE: CMB RENEWALS**

**RECOMMENDATION:** That the Osawatomie City Council approve the CMB Licenses for the businesses identified below.

**DETAILS:** Cereal Mal Beverage licenses are issued on a calendar basis and will expire December 31, 2021. The following establishments have filed for renewals in 2022.

- Casey’s Retail Company (503 E. Main Street)
- Casey’s Retail Company (400 6<sup>th</sup> Street)
- Gasmart LLC / Quick Stop (301 E. Gateway Drive)
- Whistle Stop Café (901 6<sup>th</sup> Street)
- Bogey’s (Osawatomie Golf Course) (32942 W. Lakeside Drive)

**IMPORTANT NOTE:** We realized in reviewing past CMB applications that we had not been completing both a physical inspection of the premises nor a background check required by Kansas law. We have corrected that oversight and have processes in place to catch this on an annual basis.

# CORPORATE APPLICATION FOR LICENSE TO SELL CEREAL MALT BEVERAGES

(This form has been prepared by the Attorney General's Office)

City or  County of Osawatomie

## SECTION 1 – LICENSE TYPE

Check One:  New License  Renew License  Special Event Permit

Check One:

- License to sell cereal malt beverages for consumption on the premises.  
 License to sell cereal malt beverages in original and unopened containers and not for consumption on the licensed premises.

## SECTION 2 – APPLICANT INFORMATION

Kansas Sales Tax Registration Number (required):

I have registered as an Alcohol Dealer with the TTB.  Yes (required for new application)

Name of Corporation City of Osawatomie		FEIN	
Corporation Street Address 439 Main St		Corporation City Osawatomie	State KS
Date of Incorporation 1863		Articles of Incorporation are on file with the Secretary of State.	<input checked="" type="checkbox"/> Yes <input type="checkbox"/> No
Resident Agent Name Eric Draper		Phone No. 913-755-2146	
Residence Street Address 804 E Osage		City Paola	State KS
		Zip Code 66071	

## SECTION 3 – LICENSED PREMISE

Licensed Premise (Business Location or Location of Special Event)				Mailing Address (If different from business address)			
DBA Name Bogey's				Name Osawatomie Golf Course			
Business Location Address 32942 W. Lakeside Dr				Address PO Box 37			
City Osawatomie	State KS	Zip 66064		City Osawatomie	State KS	Zip 66064	
Email Address(s) Please separate values with a comma.							
Business Phone No.				<input type="checkbox"/> Applicant owns the proposed business location. <input checked="" type="checkbox"/> Applicant does not own the proposed business location.			
Business Location Owner Name(s)							

## SECTION 4 – OFFICERS, DIRECTORS, STOCKHOLDERS OWNING 25% OR MORE OF STOCK

List each person and their spouse\*, if applicable. Attach additional pages if necessary.

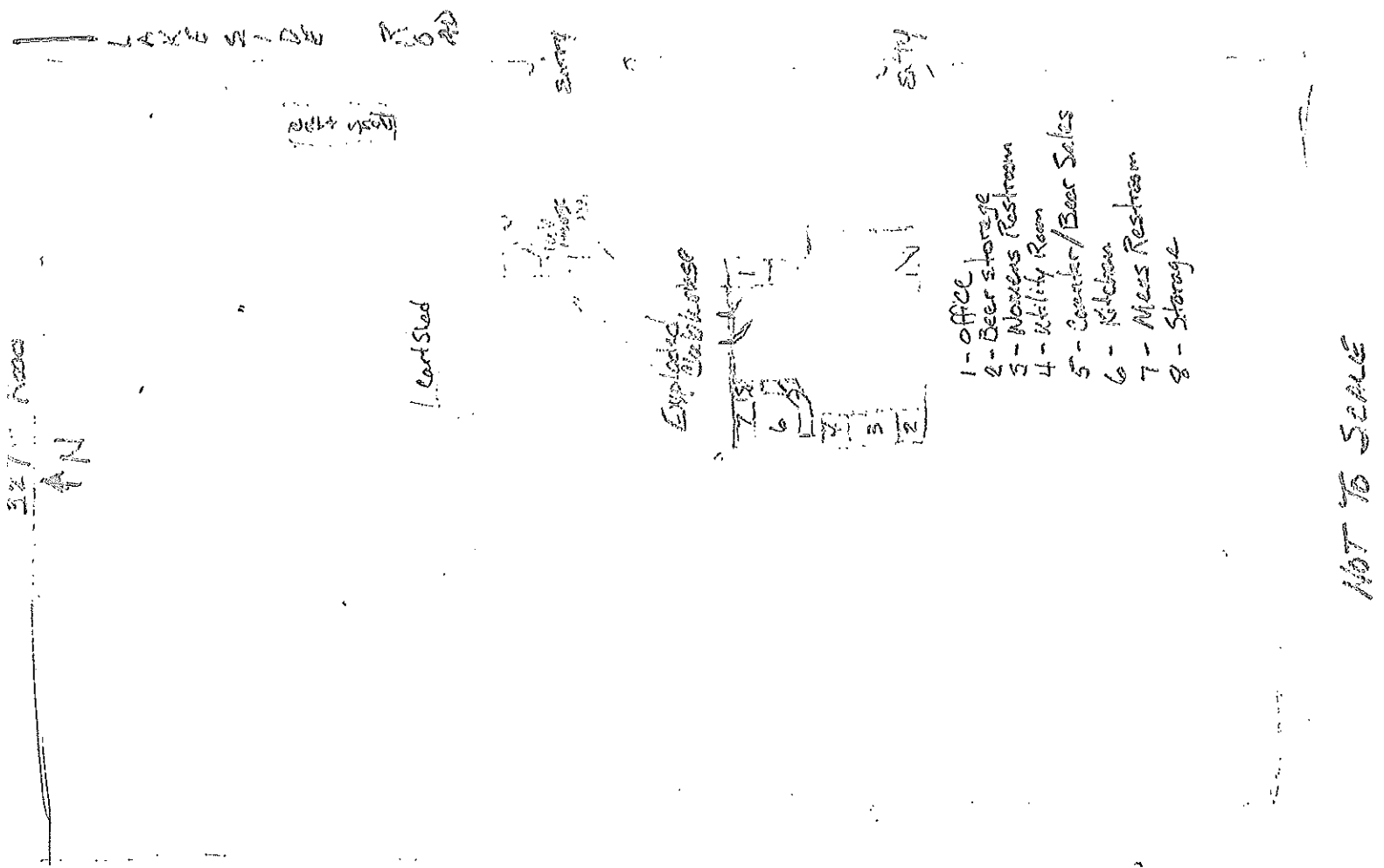
Name		Position		Date of Birth	
Residence Street Address		City	State	Zip Code	
Spouse Name		Position		Date of Birth	
Residence Street Address		City	State	Zip Code	
Name		Position		Date of Birth	
Residence Street Address		City	State	Zip Code	
Spouse Name		Position		Age	
Residence Street Address		City	State	Zip Code	
Name		Position		Date of Birth	
Residence Street Address		City	State	Zip Code	
Spouse Name		Position		Age	
Residence Street Address		City	State	Zip Code	

**SECTION 4 – OFFICERS, DIRECTORS, STOCKHOLDERS OWNING 25% OR MORE OF STOCK (CONTINUED)**

Name	Position	Date of Birth
Residence Street Address	City	State Zip Code
Spouse Name	Position	Date of Birth
Residence Street Address	City	State Zip Code
Name	Position	Date of Birth
Residence Street Address	City	State Zip Code
Spouse Name	Position	Date of Birth
Residence Street Address	City	State Zip Code
Name	Position	Date of Birth
Residence Street Address	City	State Zip Code
Spouse Name	Position	Date of Birth
Residence Street Address	City	State Zip Code
Name	Position	Date of Birth
Residence Street Address	City	State Zip Code
Spouse Name	Position	Date of Birth
Residence Street Address	City	State Zip Code
Name	Position	Date of Birth
Residence Street Address	City	State Zip Code
Spouse Name	Position	Date of Birth
Residence Street Address	City	State Zip Code
Name	Position	Date of Birth
Residence Street Address	City	State Zip Code
Spouse Name	Position	Date of Birth
Residence Street Address	City	State Zip Code
Name	Position	Date of Birth
Residence Street Address	City	State Zip Code
Spouse Name	Position	Date of Birth
Residence Street Address	City	State Zip Code
Name	Position	Date of Birth
Residence Street Address	City	State Zip Code
Spouse Name	Position	Date of Birth
Residence Street Address	City	State Zip Code
Name	Position	Date of Birth
Residence Street Address	City	State Zip Code
Spouse Name	Position	Date of Birth
Residence Street Address	City	State Zip Code

<b>SECTION 5 – MANAGER OR AGENT INFORMATION</b>		
My place of business or special event will be conducted by a manager or agent.		<input checked="" type="checkbox"/> Yes <input type="checkbox"/> No
If yes, provide the following:		
Manager/Agent Name Eric Draper	Phone No. 913-333-6533	Date of Birth 11/02/1981
Residence Street Address 804 E. Osage	City and State Paola KS	Zip Code 66064
<b>Manager or Agent Spousal Information*</b>		
Spouse Name	Phone No.	Date of Birth
Residence Street Address	City and State	Zip Code
<b>SECTION 6 – QUALIFICATIONS FOR LICENSURE</b>		
Applies to each partner or member of a firm or association AND their spouses*. Enter lowest residency length number**.		
Are all persons identified in Sections 4 & 5 Citizens of the United States*?	<input checked="" type="checkbox"/> Yes <input type="checkbox"/> No	
Is the person identified in Section 5 currently a resident of Kansas*?	<input checked="" type="checkbox"/> Yes <input type="checkbox"/> No	
All persons identified in Sections 4 & 5 are at least 21 years old*?	<input checked="" type="checkbox"/> Yes <input type="checkbox"/> No	
All persons in Sections 4 & 5 have been a Kansas resident for at least _____ years prior to submitting this application.**		
Within 2 years immediately preceding the date of this application, have any persons identified in Sections 4 & 5 been convicted of, released from incarceration for or released from probation or parole for any of the following crimes*: (1) Any felony; (2) a crime involving moral turpitude; (3) drunkenness; (4) driving a motor vehicle while under the influence of alcohol (DUI); or (5) violation of any state or federal intoxicating liquor law?	<input type="checkbox"/> Yes <input checked="" type="checkbox"/> No	
Does the partnership, firm or association have a manager, officer, director or stockholder owning in the aggregate more than 25% of the stock of a corporation that has had any license issued pursuant to the Kansas Liquor Control Act, Kansas Club and Drinking Establishment Act or Kansas Cereal Malt Beverage Act, revoked for a violation of such acts?	<input type="checkbox"/> Yes <input checked="" type="checkbox"/> No	
Has the spouse of any partner or member ever been convicted of any of the crimes identified in Section 6 during the time the partner or member held a CMB license?	<input type="checkbox"/> Yes <input checked="" type="checkbox"/> No	
<b>SECTION 7 – DURATION OF SPECIAL EVENT</b>		
Start Date	Time	<input type="checkbox"/> AM <input type="checkbox"/> PM
End Date	Time	<input type="checkbox"/> AM <input type="checkbox"/> PM

Proceed to Section 8 on the next page.



NOT TO SCALE

I declare under penalty of perjury under the laws of the State of Kansas that the foregoing is true and correct and that I am authorized by the corporation to complete this application. (K.S.A. 53-601)

SIGNATURE [Signature]

DATE 11/22/2021

FOR CITY/COUNTY OFFICE USE ONLY:

License Fee Received Amount \$ \_\_\_\_\_ Date \_\_\_\_\_  
 (\$25 - \$50 for Off-Premise license or \$25-200 On-Premise license)

\$25 CMB Stamp Fee Received Date \_\_\_\_\_

Background Investigation  Completed Date 12/10/21  Qualified  Disqualified

Verified applicant has registered with the TTB as an Alcohol Dealer

New License Approved Valid From Date \_\_\_\_\_ to \_\_\_\_\_ By: \_\_\_\_\_

License Renewed Valid From Date \_\_\_\_\_ to \_\_\_\_\_ By: \_\_\_\_\_

Special Event Permit Approved Valid From Date \_\_\_\_\_ to \_\_\_\_\_ By: \_\_\_\_\_

A PHOTOCOPY OF THE COMPLETED FORM, TOGETHER WITH THE STAMP FEE REQUIRED BY K.S.A. 41-2702(e), MUST BE SUBMITTED WITH YOUR MONTHLY REPORT (ABC-307) TO THE ALCOHOLIC BEVERAGE CONTROL, 109 SW 9TH ST, 5TH FLOOR, PO BOX 3506, TOPEKA, KS 66601.

\* Applicant's spouse is not required to meet citizenship or age requirements. If renewal application, applicant's spouse is not required to meet the no criminal history requirement. K.S.A. 41-2703(b)(9)



# CORPORATE APPLICATION FOR LICENSE TO SELL CEREAL MALT BEVERAGES

(This form has been prepared by the Attorney General's Office)

City or  County of OSAWATOMIE

<b>SECTION 1 – LICENSE TYPE</b>				
Check One: <input type="checkbox"/> New License <input checked="" type="checkbox"/> Renew License <input type="checkbox"/> Special Event Permit				
Check One: <input type="checkbox"/> License to sell cereal malt beverages for consumption on the premises. <input checked="" type="checkbox"/> License to sell cereal malt beverages in original and unopened containers and not for consumption on the licensed premises.				
<b>SECTION 2 – APPLICANT INFORMATION</b>				
Kansas Sales Tax Registration Number (required): 004-201025921F-01				
I have registered as an Alcohol Dealer with the TTB. <input checked="" type="checkbox"/> Yes (required for new application)				
Name of Corporation CASEY'S RETAIL COMPANY		Principal Place of Business ONE SE CONVENIENCE BLVD		
Corporation Street Address ONE SE CONVENIENCE BLVD		Corporation City ANKENY	State IA      Zip Code 50021	
Date of Incorporation 04/14/04	Articles of Incorporation are on file with the Secretary of State.		<input checked="" type="checkbox"/> Yes <input type="checkbox"/> No	
Resident Agent Name C T CORPORATION SYSTEM		Phone No. 866-331-2303		
Residence Street Address 112 SW 7TH ST, SUITE 3C		City TOPEKA	State KS      Zip Code 66603	
<b>SECTION 3 – LICENSED PREMISE</b>				
<b>Licensed Premise</b> (Business Location or Location of Special Event)		<b>Mailing Address</b> (If different from business address)		
DBA Name CASEY'S #1977		Name CASEY'S RETAIL COMPANY, ATTN: GAYLE BEGALSKE		
Business Location Address 400 6TH ST		Address PO BOX 3001		
City OSAWATOMIE, KS 66064	State	City ANKENY, IA 50021	State      Zip	
Business Phone No. (913) 755-6558		<input checked="" type="checkbox"/> Applicant owns the proposed business location. <input type="checkbox"/> Applicant does not own the proposed business location.		
Business Location Owner Name(s) CASEY'S RETAIL COMPANY				
<b>SECTION 4 – OFFICERS, DIRECTORS, STOCKHOLDERS OWNING 25% OR MORE OF STOCK</b> List each person and their spouse*, if applicable. Attach additional pages if necessary.				
Name NO PERSONS INDIVIDUALLY OR IN AGGREGATE OWN 25% OR MORE OF CORPORATE STOCK		Position		Date of Birth
Residence Street Address		City	State	Zip Code
Spouse Name		Position		Date of Birth
Residence Street Address		City	State	Zip Code
Name		Position		Date of Birth
Residence Street Address		City	State	Zip Code
Spouse Name		Position		Age
Residence Street Address		City	State	Zip Code
Name		Position		Date of Birth
Residence Street Address		City	State	Zip Code
Spouse Name		Position		Age
Residence Street Address		City	State	Zip Code

**SECTION 4 – OFFICERS, DIRECTORS, STOCKHOLDERS OWNING 25% OR MORE OF STOCK (CONTINUED)**

Name	Position	Date of Birth
Residence Street Address	City	State Zip Code
Spouse Name	Position	Date of Birth
Residence Street Address	City	State Zip Code
Name	Position	Date of Birth
Residence Street Address	City	State Zip Code
Spouse Name	Position	Date of Birth
Residence Street Address	City	State Zip Code
Name	Position	Date of Birth
Residence Street Address	City	State Zip Code
Spouse Name	Position	Date of Birth
Residence Street Address	City	State Zip Code
Name	Position	Date of Birth
Residence Street Address	City	State Zip Code
Spouse Name	Position	Date of Birth
Residence Street Address	City	State Zip Code
Name	Position	Date of Birth
Residence Street Address	City	State Zip Code
Spouse Name	Position	Date of Birth
Residence Street Address	City	State Zip Code
Name	Position	Date of Birth
Residence Street Address	City	State Zip Code
Spouse Name	Position	Date of Birth
Residence Street Address	City	State Zip Code
Name	Position	Date of Birth
Residence Street Address	City	State Zip Code
Spouse Name	Position	Date of Birth
Residence Street Address	City	State Zip Code
Name	Position	Date of Birth
Residence Street Address	City	State Zip Code
Spouse Name	Position	Date of Birth
Residence Street Address	City	State Zip Code
Name	Position	Date of Birth
Residence Street Address	City	State Zip Code
Spouse Name	Position	Date of Birth
Residence Street Address	City	State Zip Code
Name	Position	Date of Birth
Residence Street Address	City	State Zip Code
Spouse Name	Position	Date of Birth
Residence Street Address	City	State Zip Code



<b>SECTION 5 – MANAGER OR AGENT INFORMATION</b>		
My place of business or special event will be conducted by a manager or agent.		<input checked="" type="checkbox"/> Yes <input type="checkbox"/> No
If yes, provide the following:		
Manager/Agent Name TIAGO COELHO	Phone No. 515-601-6311	Date of Birth 09-05-1982
Residence Street Address 2420 N LAKESIDE DR	City ANDOVER	Zip Code 67002
<b>Manager or Agent Spousal Information*</b>		
Spouse Name N/A	Phone No.	Date of Birth
Residence Street Address	City	Zip Code
<b>SECTION 6 – QUALIFICATIONS FOR LICENSURE</b>		
Within 2 years immediately preceding the date of this application, have any of the individuals identified in Sections 4 & 5 have been convicted of, released from incarceration for or released from probation or parole for any of the following crimes*: (1) Any felony; (2) a crime involving moral turpitude; (3) drunkenness; (4) driving a motor vehicle while under the influence of alcohol (DUI); or (5) violation of any state or federal intoxicating liquor law.		<input type="checkbox"/> Yes <input checked="" type="checkbox"/> No
Have any of the individuals identified in Sections 4 and 5 been managers, officers, directors or stockholders owning more than 25% of the stock of a corporation which: (1) had a cereal malt beverage license revoked; or (2) was convicted of violating the Club and Drinking Establishment Act or the CMB laws of Kansas.		<input type="checkbox"/> Yes <input checked="" type="checkbox"/> No
All of the individuals identified in Sections 4 & 5 are at least 21 years of age*.		<input checked="" type="checkbox"/> Yes <input type="checkbox"/> No
<b>SECTION 7 – DURATION OF SPECIAL EVENT</b>		
Start Date	Time	<input type="checkbox"/> AM <input type="checkbox"/> PM
End Date	Time	<input type="checkbox"/> AM <input type="checkbox"/> PM

Proceed to Section 8 on the next page.

**SECTION 8 – LICENSED PREMISE**

In the space below, draw the area you wish to sell or deliver CMB. Include entrances, exits and storage areas. Do not include areas you do not wish to license. If you wish to attach a drawing, check the box:  8 ½" by 11" drawing attached.



I declare under penalty of perjury under the laws of the State of Kansas that the foregoing is true and correct and that I am authorized by the corporation to complete this application. (K.S.A. 53-601)

SIGNATURE *Douglas M. Bueck* DATE 11/18/21

FOR CITY/COUNTY OFFICE USE ONLY:

License Fee Received Amount \$ 50.00 Date 12/6/21  
( \$25 - \$50 for Off-Premise license or \$25-200 On-Premise license)

\$25 CMB Stamp Fee Received Date 12/6/21

Background Investigation  Completed Date 12/10/21  Qualified  Disqualified

Verified applicant has registered with the TTB as an Alcohol Dealer

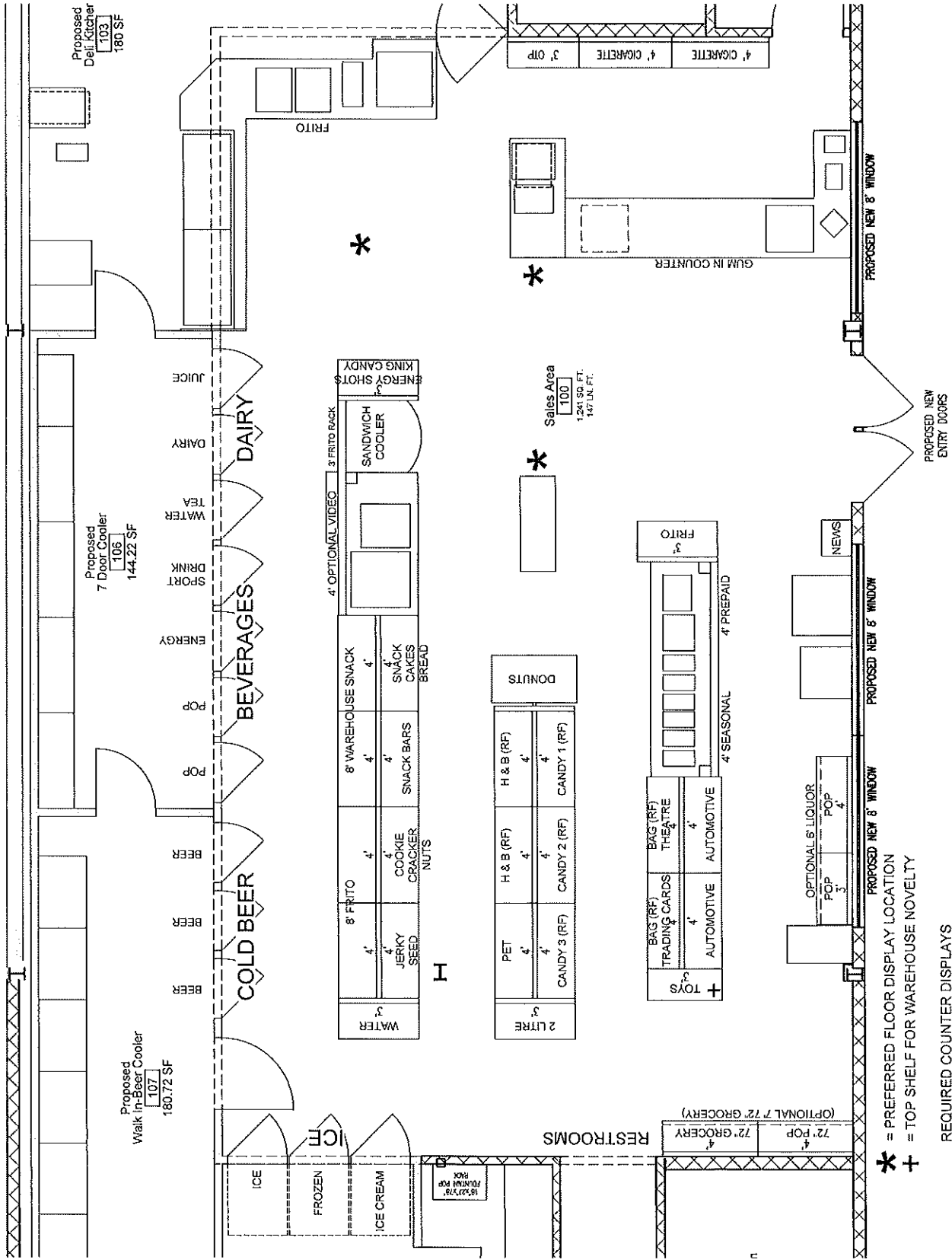
New License Approved Valid From Date \_\_\_\_\_ to \_\_\_\_\_ By: \_\_\_\_\_

License Renewed Valid From Date \_\_\_\_\_ to \_\_\_\_\_ By: \_\_\_\_\_

Special Event Permit Approved Valid From Date \_\_\_\_\_ to \_\_\_\_\_ By: \_\_\_\_\_

A PHOTOCOPY OF THE COMPLETED FORM, TOGETHER WITH THE STAMP FEE REQUIRED BY K.S.A. 41-2702(e), MUST BE SUBMITTED WITH YOUR MONTHLY REPORT (ABC-307) TO THE ALCOHOLIC BEVERAGE CONTROL, 109 SW 9TH ST, 5TH FLOOR, PO BOX 3506, TOPEKA, KS 66601.

\* Applicant's spouse is not required to meet citizenship, residency or age requirements. If renewal application, applicant's spouse is not required to meet the no criminal history requirement. K.S.A. 41-2703(b)(9)



- + = PREFERRED FLOOR DISPLAY LOCATION
- \* = TOP SHELF FOR WAREHOUSE NOVELTY

- REQUIRED COUNTER DISPLAYS
- LIGHTERS
- OLD WISCONSIN MEAT STICKS
- BEST MAID RACK
- GUM/CANDY M&M'S RACK
- MONTHLY DISPLAYS
- BAKERY RACK
- ORBIT/POPCORN - ON FOOD SERVICE COUNTER

# CORPORATE APPLICATION FOR LICENSE TO SELL CEREAL MALT BEVERAGES

(This form has been prepared by the Attorney General's Office)

City or  County of OSAWATOMIE

<b>SECTION 1 – LICENSE TYPE</b>			
Check One: <input type="checkbox"/> New License <input checked="" type="checkbox"/> Renew License <input type="checkbox"/> Special Event Permit			
Check One: <input type="checkbox"/> License to sell cereal malt beverages for consumption on the premises. <input checked="" type="checkbox"/> License to sell cereal malt beverages in original and unopened containers and not for consumption on the licensed premises.			
<b>SECTION 2 – APPLICANT INFORMATION</b>			
Kansas Sales Tax Registration Number (required): 004-201025921F-01			
I have registered as an Alcohol Dealer with the TTB. <input checked="" type="checkbox"/> Yes (required for new application)			
Name of Corporation CASEY'S RETAIL COMPANY		Principal Place of Business ONE SE CONVENIENCE BLVD	
Corporation Street Address ONE SE CONVENIENCE BLVD		Corporation City ANKENY	State IA
Date of Incorporation 04/14/04		Articles of Incorporation are on file with the Secretary of State. <input checked="" type="checkbox"/> Yes <input type="checkbox"/> No	
Resident Agent Name C T CORPORATION SYSTEM		Phone No. 866-331-2303	
Residence Street Address 112 SW 7TH ST, SUITE 3C		City TOPEKA	State KS
Zip Code 66603			
<b>SECTION 3 – LICENSED PREMISE</b>			
Licensed Premise (Business Location or Location of Special Event)		Mailing Address (If different from business address)	
DBA Name CASEY'S #3560		Name CASEY'S RETAIL COMPANY, ATTN: GAYLE BEGALSKE	
Business Location Address 503 E MAIN ST		Address PO BOX 3001	
City OSAWATOMIE, KS 66064	State	City ANKENY, IA 50021	State
Zip 66064		Zip 50021	
Business Phone No. (913) 755-2546		<input checked="" type="checkbox"/> Applicant owns the proposed business location. <input type="checkbox"/> Applicant does not own the proposed business location.	
Business Location Owner Name(s) CASEY'S RETAIL COMPANY			
<b>SECTION 4 – OFFICERS, DIRECTORS, STOCKHOLDERS OWNING 25% OR MORE OF STOCK</b>			
List each person and their spouse*, if applicable. Attach additional pages if necessary.			
Name NO PERSONS INDIVIDUALLY OR IN AGGREGATE OWN 25% OR MORE OF CORPORATE STOCK		Position	
Residence Street Address		City	State
			Zip Code
Spouse Name		Position	
Residence Street Address		City	State
			Zip Code
Name		Position	
Residence Street Address		City	State
			Zip Code
Spouse Name		Position	
Residence Street Address		City	State
			Zip Code
Name		Position	
Residence Street Address		City	State
			Zip Code
Spouse Name		Position	
Residence Street Address		City	State
			Zip Code

**SECTION 4 – OFFICERS, DIRECTORS, STOCKHOLDERS OWNING 25% OR MORE OF STOCK (CONTINUED)**

Name	Position		Date of Birth
Residence Street Address	City	State	Zip Code
Spouse Name	Position		Date of Birth
Residence Street Address	City	State	Zip Code
Name	Position		Date of Birth
Residence Street Address	City	State	Zip Code
Spouse Name	Position		Date of Birth
Residence Street Address	City	State	Zip Code
Name	Position		Date of Birth
Residence Street Address	City	State	Zip Code
Spouse Name	Position		Date of Birth
Residence Street Address	City	State	Zip Code
Name	Position		Date of Birth
Residence Street Address	City	State	Zip Code
Spouse Name	Position		Date of Birth
Residence Street Address	City	State	Zip Code
Name	Position		Date of Birth
Residence Street Address	City	State	Zip Code
Spouse Name	Position		Date of Birth
Residence Street Address	City	State	Zip Code
Name	Position		Date of Birth
Residence Street Address	City	State	Zip Code
Spouse Name	Position		Date of Birth
Residence Street Address	City	State	Zip Code
Name	Position		Date of Birth
Residence Street Address	City	State	Zip Code
Spouse Name	Position		Date of Birth
Residence Street Address	City	State	Zip Code
Name	Position		Date of Birth
Residence Street Address	City	State	Zip Code
Spouse Name	Position		Date of Birth
Residence Street Address	City	State	Zip Code
Name	Position		Date of Birth
Residence Street Address	City	State	Zip Code
Spouse Name	Position		Date of Birth
Residence Street Address	City	State	Zip Code

<b>SECTION 5 – MANAGER OR AGENT INFORMATION</b>		
My place of business or special event will be conducted by a manager or agent.		<input checked="" type="checkbox"/> Yes <input type="checkbox"/> No
If yes, provide the following:		
Manager/Agent Name TIAGO COELHO	Phone No. 515-601-6311	Date of Birth 09-05-1982
Residence Street Address 2420 N LAKESIDE DR	City ANDOVER	Zip Code 67002
<b>Manager or Agent Spousal Information*</b>		
Spouse Name N/A	Phone No.	Date of Birth
Residence Street Address	City	Zip Code
<b>SECTION 6 – QUALIFICATIONS FOR LICENSURE</b>		
Within 2 years immediately preceding the date of this application, have any of the individuals identified in Sections 4 & 5 have been convicted of, released from incarceration for or released from probation or parole for any of the following crimes*: (1) Any felony; (2) a crime involving moral turpitude; (3) drunkenness; (4) driving a motor vehicle while under the influence of alcohol (DUI); or (5) violation of any state or federal intoxicating liquor law.		<input type="checkbox"/> Yes <input checked="" type="checkbox"/> No
Have any of the individuals identified in Sections 4 and 5 been managers, officers, directors or stockholders owning more than 25% of the stock of a corporation which: (1) had a cereal malt beverage license revoked; or (2) was convicted of violating the Club and Drinking Establishment Act or the CMB laws of Kansas.		<input type="checkbox"/> Yes <input checked="" type="checkbox"/> No
All of the individuals identified in Sections 4 & 5 are at least 21 years of age*.		<input checked="" type="checkbox"/> Yes <input type="checkbox"/> No
<b>SECTION 7 – DURATION OF SPECIAL EVENT</b>		
Start Date	Time	<input type="checkbox"/> AM <input type="checkbox"/> PM
End Date	Time	<input type="checkbox"/> AM <input type="checkbox"/> PM

Proceed to Section 8 on the next page.

**SECTION 8 – LICENSED PREMISE**

In the space below, draw the area you wish to sell or deliver CMB. Include entrances, exits and storage areas. Do not include areas you do not wish to license. If you wish to attach a drawing, check the box:  8 1/2" by 11" drawing attached.



I declare under penalty of perjury under the laws of the State of Kansas that the foregoing is true and correct and that I am authorized by the corporation to complete this application. (K.S.A. 53-601)

SIGNATURE *Douglas M. Beal* DATE 11/18/21

FOR CITY/COUNTY OFFICE USE ONLY:

License Fee Received Amount \$ 50.00 Date 12/6/21  
( \$25 - \$50 for Off-Premise license or \$25-200 On-Premise license )

\$25 CMB Stamp Fee Received Date 12/6/21

Background Investigation  Completed Date 12/10/21  Qualified  Disqualified

Verified applicant has registered with the TTB as an Alcohol Dealer

New License Approved Valid From Date \_\_\_\_\_ to \_\_\_\_\_ By: \_\_\_\_\_

License Renewed Valid From Date \_\_\_\_\_ to \_\_\_\_\_ By: \_\_\_\_\_

Special Event Permit Approved Valid From Date \_\_\_\_\_ to \_\_\_\_\_ By: \_\_\_\_\_

A PHOTOCOPY OF THE COMPLETED FORM, TOGETHER WITH THE STAMP FEE REQUIRED BY K.S.A. 41-2702(e), MUST BE SUBMITTED WITH YOUR MONTHLY REPORT (ABC-307) TO THE ALCOHOLIC BEVERAGE CONTROL, 109 SW 9TH ST, 5TH FLOOR, PO BOX 3506, TOPEKA, KS 66601.

\* Applicant's spouse is not required to meet citizenship, residency or age requirements. If renewal application, applicant's spouse is not required to meet the no criminal history requirement. K.S.A. 41-2703(b)(9)





# CORPORATE APPLICATION FOR LICENSE TO SELL CEREAL MALT BEVERAGES

(This form has been prepared by the Attorney General's Office)

City or  County of OSAWATOMIE

## SECTION 1 – LICENSE TYPE

Check One:  New License  Renew License  Special Event Permit

Check One:

- License to sell cereal malt beverages for consumption on the premises.  
 License to sell cereal malt beverages in original and unopened containers and not for consumption on the licensed premises.

## SECTION 2 – APPLICANT INFORMATION

Kansas Sales Tax Registration Number (required): 004-814377692F-01

I have registered as an Alcohol Dealer with the TTB.  Yes (required for new application)

Name of Corporation <u>GNS LLC DBA GASMART</u>		FEIN <u>81-4377692</u>	
Corporation Street Address <u>301 EASTGATE DR.</u>	Corporation City <u>OSAWATOMIE</u>	State <u>KS</u>	Zip Code <u>66064</u>
Date of Incorporation <u>01/01/2017</u>	Articles of Incorporation are on file with the Secretary of State.		<input type="checkbox"/> Yes <input type="checkbox"/> No
Resident Agent Name <u>KULJIT KAUR.</u>	Phone No. <u>913-710-8655</u>		
Residence Street Address <u>18100W 164th TER</u>	City <u>OLATHIE</u>	State <u>KS</u>	Zip Code <u>66062</u>

## SECTION 3 – LICENSED PREMISE

Licensed Premise (Business Location or Location of Special Event)	Mailing Address (If different from business address)
DBA Name <u>GASMART/Quick Stop</u>	Name
Business Location Address <u>SAME</u>	Address
City State Zip	City State Zip
Email Address(s) Please separate values with a comma.	
Business Phone No. <u>913-755-2674</u>	<input checked="" type="checkbox"/> Applicant owns the proposed business location. <input type="checkbox"/> Applicant does not own the proposed business location.
Business Location Owner Name(s) <u>KULJIT KAUR.</u>	

## SECTION 4 – OFFICERS, DIRECTORS, STOCKHOLDERS OWNING 25% OR MORE OF STOCK

List each person and their spouse\*, if applicable. Attach additional pages if necessary.

Name <u>KULJIT KAUR.</u>	Position <u>OWNER.</u>	Date of Birth <u>05/19/82</u>
Residence Street Address <u>18100W 164th TER</u>	City <u>OLATHIE</u> State <u>KS</u>	Zip Code <u>66062</u>
Spouse Name	Position	Date of Birth
Residence Street Address	City State Zip Code	
Name	Position	Date of Birth
Residence Street Address	City State Zip Code	
Spouse Name	Position	Age
Residence Street Address	City State Zip Code	
Name	Position	Date of Birth
Residence Street Address	City State Zip Code	
Spouse Name	Position	Age
Residence Street Address	City State Zip Code	

**SECTION 4 – OFFICERS, DIRECTORS, STOCKHOLDERS OWNING 25% OR MORE OF STOCK (CONTINUED)**

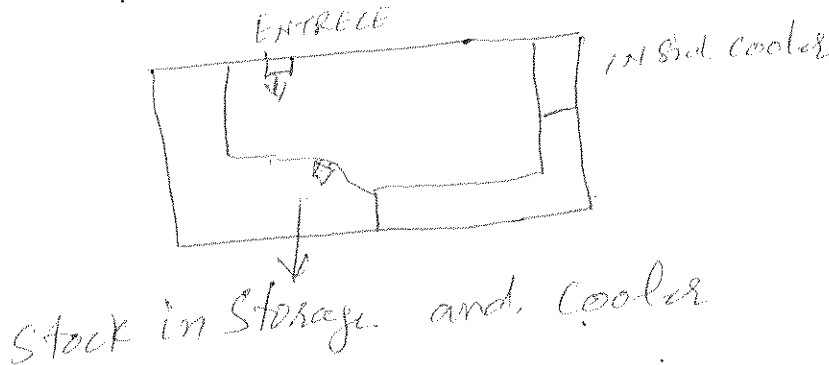
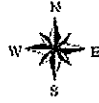
Name	Position		Date of Birth
Residence Street Address	City	State	Zip Code
Spouse Name	Position		Date of Birth
Residence Street Address	City	State	Zip Code
Name	Position		Date of Birth
Residence Street Address	City	State	Zip Code
Spouse Name	Position		Date of Birth
Residence Street Address	City	State	Zip Code
Name	Position		Date of Birth
Residence Street Address	City	State	Zip Code
Spouse Name	Position		Date of Birth
Residence Street Address	City	State	Zip Code
Name	Position		Date of Birth
Residence Street Address	City	State	Zip Code
Spouse Name	Position		Date of Birth
Residence Street Address	City	State	Zip Code
Name	Position		Date of Birth
Residence Street Address	City	State	Zip Code
Spouse Name	Position		Date of Birth
Residence Street Address	City	State	Zip Code
Name	Position		Date of Birth
Residence Street Address	City	State	Zip Code
Spouse Name	Position		Date of Birth
Residence Street Address	City	State	Zip Code
Name	Position		Date of Birth
Residence Street Address	City	State	Zip Code
Spouse Name	Position		Date of Birth
Residence Street Address	City	State	Zip Code
Name	Position		Date of Birth
Residence Street Address	City	State	Zip Code
Spouse Name	Position		Date of Birth
Residence Street Address	City	State	Zip Code

<b>SECTION 5 – MANAGER OR AGENT INFORMATION</b>		
My place of business or special event will be conducted by a manager or agent.		<input type="checkbox"/> Yes <input checked="" type="checkbox"/> No
If yes, provide the following:		
Manager/Agent Name	Phone No.	Date of Birth
Residence Street Address	City and State	Zip Code
<b>Manager or Agent Spousal Information*</b>		
Spouse Name	Phone No.	Date of Birth
Residence Street Address	City and State	Zip Code
<b>SECTION 6 – QUALIFICATIONS FOR LICENSURE</b>		
Applies to each partner or member of a firm or association AND their spouses*. Enter lowest residency length number**.		
Are all persons identified in Sections 4 & 5 Citizens of the United States*?	<input checked="" type="checkbox"/> Yes <input type="checkbox"/> No	
Is the person identified in Section 5 currently a resident of Kansas*?	<input checked="" type="checkbox"/> Yes <input type="checkbox"/> No	
All persons identified in Sections 4 & 5 are at least 21 years old*?	<input checked="" type="checkbox"/> Yes <input type="checkbox"/> No	
All persons in Sections 4 & 5 have been a Kansas resident for at least _____ years prior to submitting this application.**		
Within 2 years immediately preceding the date of this application, have any persons identified in Sections 4 & 5 been convicted of, released from incarceration for or released from probation or parole for any of the following crimes*: (1) Any felony; (2) a crime involving moral turpitude; (3) drunkenness; (4) driving a motor vehicle while under the influence of alcohol (DUI); or (5) violation of any state or federal intoxicating liquor law?	<input type="checkbox"/> Yes <input checked="" type="checkbox"/> No	
Does the partnership, firm or association have a manager, officer, director or stockholder owning in the aggregate more than 25% of the stock of a corporation that has had any license issued pursuant to the Kansas Liquor Control Act, Kansas Club and Drinking Establishment Act or Kansas Cereal Malt Beverage Act, revoked for a violation of such acts?	<input type="checkbox"/> Yes <input checked="" type="checkbox"/> No	
Has the spouse of any partner or member ever been convicted of any of the crimes identified in Section 6 during the time the partner or member held a CMB license?	<input type="checkbox"/> Yes <input checked="" type="checkbox"/> No	
<b>SECTION 7 – DURATION OF SPECIAL EVENT</b>		
Start Date	Time	<input type="checkbox"/> AM <input type="checkbox"/> PM
End Date	Time	<input type="checkbox"/> AM <input type="checkbox"/> PM

Proceed to Section 8 on the next page.

**SECTION 8 – LICENSED PREMISE**

In the space below, draw the area you wish to sell or deliver CMB. Include entrances, exits and storage areas. Do not include areas you do not wish to license. If you wish to attach a drawing, check the box:  8 1/2" by 11" drawing attached.



I declare under penalty of perjury under the laws of the State of Kansas that the foregoing is true and correct and that I am authorized by the corporation to complete this application. (K.S.A. 53-601)

SIGNATURE Kurtis Tamm DATE 11/27/21

FOR CITY/COUNTY OFFICE USE ONLY:

License Fee Received Amount \$ 50 Date 12/1/21  
 (\$25 - \$50 for Off-Premise license or \$25-200 On-Premise license)

\$25 CMB Stamp Fee Received Date 25

Background Investigation  Completed Date 12/10/21  Qualified  Disqualified

Verified applicant has registered with the TTB as an Alcohol Dealer

New License Approved Valid From Date \_\_\_\_\_ to \_\_\_\_\_ By: \_\_\_\_\_

License Renewed Valid From Date \_\_\_\_\_ to \_\_\_\_\_ By: \_\_\_\_\_

Special Event Permit Approved Valid From Date \_\_\_\_\_ to \_\_\_\_\_ By: \_\_\_\_\_

A PHOTOCOPY OF THE COMPLETED FORM, TOGETHER WITH THE STAMP FEE REQUIRED BY K.S.A. 41-2702(e), MUST BE SUBMITTED WITH YOUR MONTHLY REPORT (ABC-307) TO THE ALCOHOLIC BEVERAGE CONTROL, 109 SW 9TH ST, 5TH FLOOR, PO BOX 3506, TOPEKA, KS 66601.

\* Applicant's spouse is not required to meet citizenship or age requirements. If renewal application, applicant's spouse is not required to meet the no criminal history requirement. K.S.A. 41-2703(b)(9)



**INDIVIDUAL/SOLE PROPRIETOR  
APPLICATION FOR LICENSE TO SELL CEREAL MALT BEVERAGES**  
(This form has been prepared by the Attorney General's Office)

City or  County of \_\_\_\_\_

<b>SECTION 1 - LICENSE TYPE</b>			
Check One: <input type="checkbox"/> New License <input checked="" type="checkbox"/> Renew License <input type="checkbox"/> Special Event Permit			
Check One: <input checked="" type="checkbox"/> License to sell cereal malt beverages for consumption on the premises. <input type="checkbox"/> License to sell cereal malt beverages in original and unopened containers and not for consumption on the licenses premises.			
<b>SECTION 2 - APPLICANT INFORMATION</b>			
Kansas Sales Tax Registration Number (required): 004-753181591-F01			
I have registered as an Alcohol Dealer with the TTB. <input type="checkbox"/> Yes (required for new application)			
Name	Phone No.	Date of Birth	
DIXIE L BENNER	913-731-1209	08-22-51	
SSN/EIN	Drivers' License Number		
485-66-4580	K02-05-9553		
Email Address(es). Please separate values with comma			
Residence Street Address	City	State	Zip Code
701 PARKVIEW WEST	OSAWATOMIE	KANSAS	66064
<b>Applicant Spousal Information</b>			
Spouse Name	Phone No.	Date of Birth	
STEVEN C BENNER	913-731-1207	01-01-52	
Residence Street Address	City	State	Zip Code
701 PARKVIEW W	OSAWATOMIE	Ks	66064
<b>SECTION 3 - LICENSED PREMISE</b>			
<b>Licensed Premise</b> (Business Location or Location of Special Event)		<b>Mailing Address</b> (If different from business address)	
DBA Name	Name		
Whistle Stop Cafe			
Business Location Address	Address		
901 S Sixth ST			
City	City	State	Zip
OSAWATOMIE		Ks	66064
Business Phone No.	<input checked="" type="checkbox"/> I own the proposed business location. <input type="checkbox"/> I do not own the proposed business location.		
913-256-4110			
Business Location Owner Name(s)	DIXIE L BENNER		
<b>SECTION 4 - APPLICANT QUALIFICATION</b>			
I am a U.S. Citizen			<input checked="" type="checkbox"/> Yes <input type="checkbox"/> No
I am at least 21 years of age			<input checked="" type="checkbox"/> Yes <input type="checkbox"/> No
I have had any license issued pursuant to the Kansas Liquor Control Act, Kansas Club and Drinking Establishment Act or Kansas Cereal Malt Beverage Act revoked for a violation of such acts?			<input type="checkbox"/> Yes <input checked="" type="checkbox"/> No
I have been a resident of Kansas for at least 25 years prior to the submission of this application.			
Within 2 years immediately preceding the date of this application, neither I nor my spouse* have been convicted of, released from incarceration for or released from probation or parole for any of the following crimes: (1) Any felony; (2) a crime involving moral turpitude; (3) drunkenness; (4) driving a motor vehicle while under the influence of alcohol (DUI); or (5) violation of any state or federal intoxicating liquor law.			<input type="checkbox"/> Yes <input checked="" type="checkbox"/> No
My spouse has previously held a CMB license.			<input checked="" type="checkbox"/> Yes <input type="checkbox"/> No
My spouse has never been convicted of one of the crimes mentioned above while licensed.			<input type="checkbox"/> Yes <input checked="" type="checkbox"/> No

<b>SECTION 5 – MANAGER OR AGENT QUALIFICATION</b>		
My place of business or special event will be conducted by a manager or agent.		<input type="checkbox"/> Yes <input checked="" type="checkbox"/> No
If yes, provide the following:		
Manager/Agent Name	Phone No.	Date of Birth
Residence Street Address	City	Zip Code
<b>Manager or Agent Spousal Information</b>		
Spouse Name	Phone No.	Date of Birth
Residence Street Address	City	Zip Code
<b>Qualification Statement</b>		
My manager/agent and his/her spouse* meets all of the qualifications in Section 4.		<input type="checkbox"/> Yes <input type="checkbox"/> No
<b>SECTION 6 – DURATION OF SPECIAL EVENT</b>		
Start Date	Time	<input type="checkbox"/> AM <input type="checkbox"/> PM
End Date	Time	<input type="checkbox"/> AM <input type="checkbox"/> PM

Proceed to Section 7 on the next page.

**SECTION 7 - LICENSED PREMISE**

In the space below, draw the area you wish to sell or deliver CMB. Include entrances, exits and storage areas. Do not include areas you do not wish to license. If you wish to attach a drawing, check the box:  8 1/2" by 11" drawing attached.



ON file with city of Osawatomie

I declare under penalty of perjury under the laws of the State of Kansas that the foregoing is true and correct.  
(K.S.A. 52-601)

SIGNATURE Dipha Beninc DATE Dec. 3 - 2021

FOR CITY/COUNTY OFFICE USE ONLY:

License Fee Received Amount \$ 50.00 Date 12/3/21  
((\$25 - \$50 for Off-Premise license or \$25-200 On-Premise license)

\$25 CMB Stamp Fee Received Date 12/3/21

Background Investigation  Completed Date 12/10/21  Qualified  Disqualified

Verified applicant has registered with the TTB as an Alcohol Dealer

New License Approved Valid From Date \_\_\_\_\_ to \_\_\_\_\_ By: \_\_\_\_\_

License Renewed Valid From Date \_\_\_\_\_ to \_\_\_\_\_ By: \_\_\_\_\_

Special Event Permit Approved Valid From Date \_\_\_\_\_ to \_\_\_\_\_ By: \_\_\_\_\_

Dec. 6 - 2021

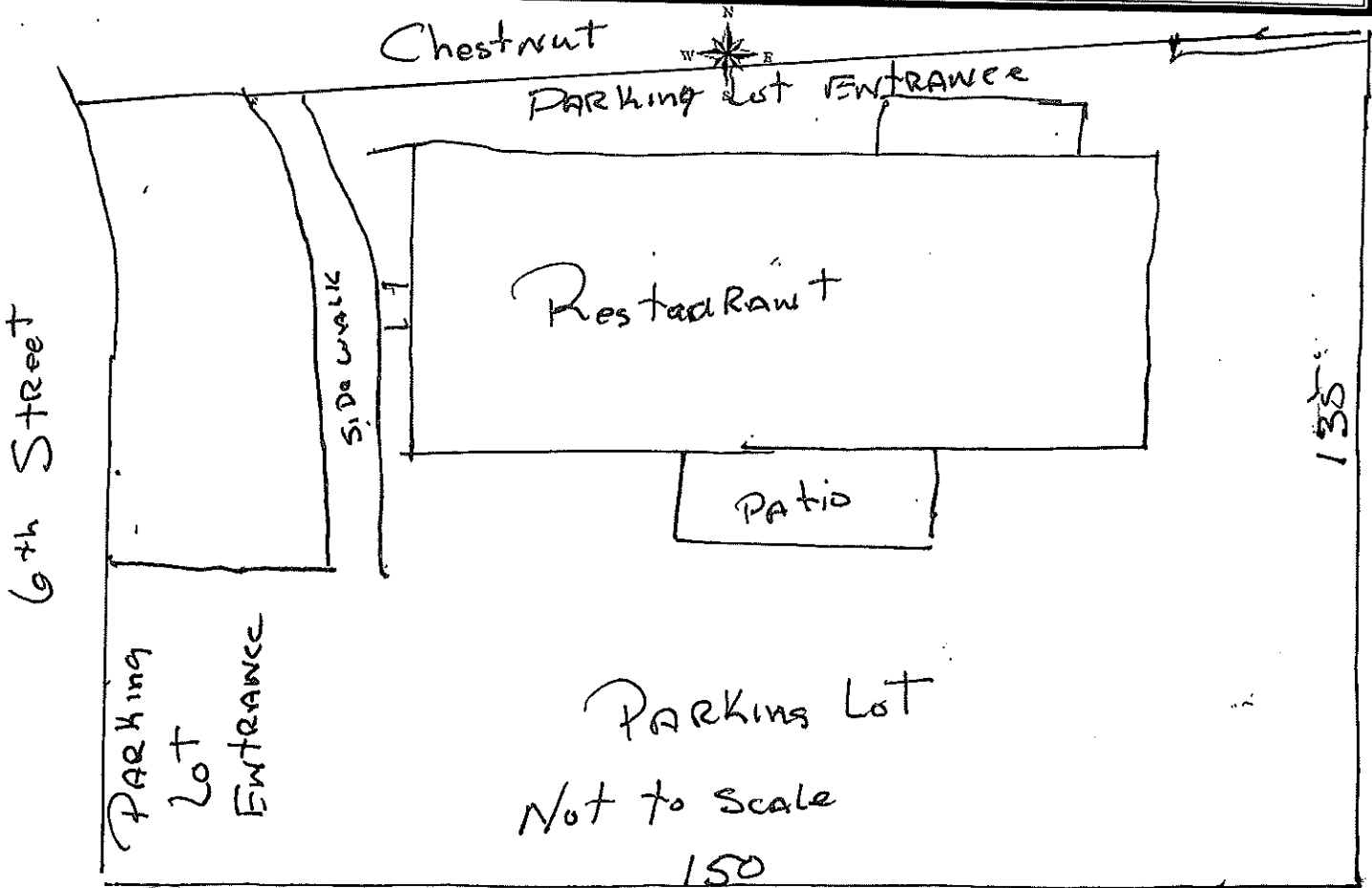
A PHOTOCOPY OF THE COMPLETED FORM, TOGETHER WITH THE STAMP FEE REQUIRED BY K.S.A. 41-2702(e), MUST BE SUBMITTED WITH YOUR MONTHLY REPORT (ABC-307) TO THE ALCOHOLIC BEVERAGE CONTROL, 109 SW 9TH ST, 5TH FLOOR, PO BOX 3506, TOPEKA, KS 66601.

\* Applicant's spouse is not required to meet the citizenship or age requirements. If renewal application, applicant's spouse is not required to meet the no criminal history requirement. K.S.A. 41-2703(b)(9)



**SECTION 7 - LICENSED PREMISE**

In the space below, draw the area you wish to sell or deliver CMB. Include entrances, exits and storage areas. Do not include areas you do not wish to license. If you wish to attach a drawing, check the box:  8 1/2" by 11" drawing attached.



*Ripie Benner* 12-06-2021  
 I declare under penalty of perjury under the laws of the State of Kansas that the foregoing is true and correct.  
 (K.S.A. 52-601)

SIGNATURE *Ripie Benner* DATE Dec. 9-2020

FOR CITY/COUNTY OFFICE USE ONLY:

License Fee Received Amount \$ 50.00 Date 12-09-20  
 (\$25 - \$50 for Off-Premise license or \$25-200 On-Premise license)

\$25 CMB Stamp Fee Received Date 12-09-20

Background Investigation  Completed Date \_\_\_\_\_  Qualified  Disqualified

Verified applicant has registered with the TTB as an Alcohol Dealer

New License Approved Valid From Date \_\_\_\_\_ to \_\_\_\_\_ By: \_\_\_\_\_

License Renewed Valid From Date \_\_\_\_\_ to \_\_\_\_\_ By: \_\_\_\_\_

Special Event Permit Approved Valid From Date \_\_\_\_\_ to \_\_\_\_\_ By: \_\_\_\_\_

A PHOTOCOPY OF THE COMPLETED FORM, TOGETHER WITH THE STAMP FEE REQUIRED BY K.S.A. 41-2702(e), MUST BE SUBMITTED WITH YOUR MONTHLY REPORT (ABC-307) TO THE ALCOHOLIC BEVERAGE CONTROL, 109 SW 9TH ST, 5TH FLOOR, PO BOX 3506, TOPEKA, KS 66601.

\* Applicant's spouse is not required to meet the citizenship, residency or age requirements. If renewal application, applicant's spouse is not required to meet the no criminal history requirement. K.S.A. 41-2703(b)(9)



**Notice of Budget Hearing for Amending the  
2021 Budget**

The governing body of

**City of Osawatomic**

will meet on the day of December 30, 2021 at 4:00 p.m. at City Hall, 439 Main Street for the purpose of hearing and answering objections of taxpayers relating to the proposed amended use of funds.

Detailed budget information is available at City Hall  
and will be available at this hearing.

**Summary of Amendments**

Fund	2021 Adopted Budget			2021 Proposed Amended Expenditures
	Actual Tax Rate	Amount of Tax that was Levied	Expenditures	
General	29.992	741,751	2,825,500	3,500,000
Industrial	0.200	4,945	27,500	70,000
Special Highway		-	125,000	140,000
Tourism		-	62,500	100,000
Special Parks & Recreation		-	41,502	60,000
Water		-	1,175,000	1,400,000
Electric		-	4,100,000	4,900,000
Sewer		-	1,000,000	1,100,000
Special 911 Revenue		-	-	10,000
Golf Course		-	350,000	425,000
<b>TOTAL</b>		<b>746,696</b>	<b>9,707,002</b>	<b>11,705,000</b>

Michael Scanlon

Official Title: City Manager



City of Osawatomie

<b>ACTION ITEM SUMMARY</b>	Item Number:	8.A
	Date:	December 29, 2021
City Manager	From:	Mike Scanlon

**RE:** Resolution 950 – Resolution of the City of Osawatomie, Kansas approving amendments to the 2021 Budget.

**RECOMMENDATION:** Approve Resolution 950 approving amendments to the 2021 Budget.

**DETAILS:** In order to stay compliant with Kansas State Budget Law the City needs to amend several funds in its 2021 Budget – see attached certificate and explanations.

**Explanation for fund expenditure limit increases.**

**General:** Increase of \$675,000 is principally a function of three events that occurred in 2021;

- Approximately \$300,000 in ARAP dollars came in to be redistributed to the Water/Wastewater Funds.
- Approximately \$150,000 in Towner Lease dollars reallocated to the Water Fund.
- Approximately \$225,000 in employment benefit costs that need to be reallocated.

**Industrial Fund:** Increase of \$42,500 allocated to finishing the Trailhead improvements.

**Special Highway:** Increase of \$15,000 allocated to street improvements.

**Tourism:** Increase of \$37,500 allocated to finishing the Trailhead improvements, Mile Zero Sign and trail signage.

**Special Parks & Recreation:** Increase of \$18,498 to account for repairs at multiple park locations, tree plantings (trailhead/John Brown Park/Anna January).

**Water:** Increase of \$225,000 to account for line replacement to the middle school (Miami County committing up to \$200,000 to reimburse/pay)

**Electric:** Increase of \$800,000 to account for Polar Vortex charges.

**Sewer:** Increase of \$100,000 to account for originating design costs for plant repairs and replacement.

**Special 911 Revenue:** This is the close out of a fund and the transfer of the fund balances to the Public Safety Equipment Fund.

**Golf Course:** Increase of \$75,000 to account for pump replacement, additional mower replacement and the purchase of recycled asphalt for cart path repairs.

**RESOLUTION NO. 950**

**A RESOLUTION OF THE CITY OF OSAWATOMIE, KANSAS  
AMENDING THE 2021 ANNUAL BUDGET.**

**WHEREAS**, the Kansas State Budget Law requires cities to adopt an annual budget that sets the City's annual expenditure limits for each budget year; and

**WHEREAS**, it's required that should a community need to exceed those limits they amend their budget to do so; and

**WHEREAS**, the 2021 Budget which was adopted didn't account for the extraordinary costs that were going to generated by COVID-19, the Polar Vortex and then all the related costs and funding that would come from those two events.

**NOW, THEREFORE, BE IT RESOLVED BY THE GOVERNING BODY OF THE CITY OF OSAWATOMIE, KANSAS:**

**SECTION ONE:** The Governing Body approves increases in expenditure authority in the following funds General, Industrial, Special Highway, Tourism, Special Parks & Recreation, Water, Electric, Sewer, and Golf Course.

**SECTION TWO:** The Governing Body approves the elimination and transfer of funds from Special 911 Revenue to the Public Safety Equipment fund.

**PASSED AND APPROVED** by the Governing Body of the City of Osawatomie, Kansas this 30th<sup>h</sup> day of December 2021, a majority being in favor thereof.

**APPROVED AND SIGNED** by the Mayor.

---

L. Mark Govea, Mayor

(SEAL)

ATTEST:

---

Tammy Seamands, City Clerk

2021

**Amended  
Certificate  
For Calendar Year 2021**

To the Clerk of Miami County, State of Kansas  
We, the undersigned, duly elected, qualified, and acting officers of  
**City of Osawatomie**  
certify that: (1) the hearing mentioned in the attached publication was held;(2) after the Budget Hearing this Budget was duly approved and adopted as the maximum expenditure for the various funds for the year.

Table of Contents:			2021 Amended Budget		
			Amount of 2020 Tax that was Levied	Adopted 2021 Expenditures	Proposed Amended 2021 Expenditures
Fund	<u>K.S.A.</u>	Page No.			
General	12.101a		741,751	2,825,500	3,500,000
Industrial	12-1617h		4,945	27,500	70,000
Special Higway				125,000	140,000
Tourism				62,500	100,000
Special Parks & Recreation				41,502	60,000
Water				1,175,000	1,400,000
Electric				4,100,000	4,900,000
Sewer				1,000,000	1,100,000
Special 911 Revenue					10,000
Golf Course				350,000	425,000
Totals		xxxxxxx	746,696	9,707,002	11,705,000
Summary of Amendments		0			

Attested date: \_\_\_\_\_

\_\_\_\_\_  
County Clerk

Assisted by:  
Michael J. Scanlon  
City Manager

Address:  
439 Main Street, PO Box 37  
Osawatomie, KS 66064

Email:  
[mscanlon@osawatomi.ks.org](mailto:mscanlon@osawatomi.ks.org)

\_\_\_\_\_  
\_\_\_\_\_  
\_\_\_\_\_  
\_\_\_\_\_  
\_\_\_\_\_  
\_\_\_\_\_

Governing Body

CPA Summary
-------------