

OSAWATOMIE CITY COUNCIL

AGENDA

January 10, 2019

6:30 p.m., Memorial Hall

1. Call to order
2. Roll Call
3. Pledge of Allegiance
4. Invocation
5. Consent Agenda
 - Consent Agenda items will be acted upon by one motion unless a Council member requests an item be removed for discussion and separate action.*
 - A. January 10th Agenda
 - B. Council Minutes from December 13, 2018
 - C. Register Report 2018-12
 - D. Pay Application – Tyler Technologies – Finance/Utility - \$7,479.69
 - E. Pay Application – JEO Consulting – Electric Generation Project –\$1,837.50
6. Comments from the Public
 - Citizen participation will be limited to 5 minutes. Stand & be recognized by the Mayor.*
7. Presentations & Proclamations
8. Public Hearings
9. Unfinished Business
10. New Business
 - A. KMEA Director Appointments
 - B. MRWAD Director Appointments
 - C. New Police Car Purchase
11. Council Report
12. Mayor's Report
13. City Manager & Staff Reports
14. Executive Sessions
 - A. Non-Elected Personnel
15. Other Discussion/Motions
16. Adjourn

NEXT REGULAR MEETING – January 24, 2019

Osawatomie, Kansas. **December 13, 2018.** The Council Meeting was held in Memorial Hall. Mayor Mark Govea called the meeting to order at 6:30 p.m. Council members present were Dickinson, Diehm, Hampson, LaDuex, Macek, Maichel (left at 7:20pm) and Wright. Councilman Walmann was absent. City Staff present at the meeting were: City Clerk Tammy Seamands, City Attorney Dick Wetzler, City Manager Don Cawby, Fire Chief Brian Love and Police Chief David Ellis. Members of the public were: Dustin Brinkerhoff and Doug Carder with Miami County Republic.

INVOCATION. Dustin Brinkerhoff, Victory Baptist Church

CONSENT AGENDA. Approval of December 13th Agenda; November 8th and 29th Minutes; Register Reports 2018-11; 2019 CMB Permits and Pay Application – Tyler Technologies – Finance/Utility - \$12,938.88 **Motion** made by Hampson, seconded by Dickinson to Approve the Consent Agenda as presented with the November 29th Minutes pulled out. Yeas: All. **Motion** made by Hampson, seconded by Dickinson with the correction of the November 29th Minutes to say the meeting was held in the conference room at City Hall and not Memorial Hall. Yeas: All.

COMMENTS FROM THE PUBLIC.

Dustin Brinkerhoff, Victory Baptist Church, this coming Sunday at 6:30pm will be their annual Christmas program. They will be doing Christmas caroling around town. Several activities planned for the next year.

PRESENTATIONS. None.

PUBLIC HEARINGS.

PROPOSED 2018 BUDGET AMENDMENTS. Opened at 6:35 p.m. and closed at 6:36 p.m. No comments from the public.

UNFINISHED BUSINESS.

2018 BUDGET AMENDMENTS. **Motion** made by Maichel, seconded by LaDuex to Approve the 2018 Budget Amendments. Yeas: All.

RESOLUTION – SET HEARING DATE FOR RECOMMENDED CONDEMNATIONS. **Motion** made by LaDuex, seconded by Hampson to Set January 29th as a Hearing Date for the Recommended Condemnations that was presented at the November 29th meeting. Yeas: All.

NEW BUSINESS.

ORDINANCE – CONTRACTOR LICENSING. City Manager Cawby presented a draft ordinance with the approach to allow a dual option for contractors licensing: continuing the reciprocal licensing and also allowing direct licensing. Direct licensing would require the contractor to supply the city with their continued education, as well as the fee would be a little

higher. **Motion** made by Dickinson, seconded by Hampson to Approve the Ordinance as presented. Yeas: All.

RESOLUTION – 2019 ANNUAL FEES. Cawby explains the fees highlighted in red are the fees that are presented to change, which are the direct licensing fees for contractors licensing and a few small edits. **Motion** made by Maichel, seconded by Hampson to Approve the 2019 Annual Fees. Yeas: All.

RESOLUTION – 2019 GAAP WAIVER. **Motion** made by LaDuex, seconded by Maichel to Approve the 2019 GAAP Waiver. Yeas: All.

COUNTY FIRE BOARD GOVERNANCE DISCUSSION. City Manager Cawby and Fire Chief Love discussed options being discussed by the County Commission considering the future of the Rural Fire Board and its operations.

COUNCIL REPORTS. None.

MAYOR’S REPORT.

Reminder that the employee lunch will be tomorrow at noon.

CITY MANAGER & STAFF REPORTS. None.

EXECUTIVE SESSION. **Motion** made by LaDuex, seconded by Hampson to go into executive session for Confidential Information of a Business – Economic Development Incentives to include City Manager, City Attorney and City Clerk for ten minutes to come back at 7:20 p.m. Yeas: All. No Action Taken

Motion made by LaDuex, seconded by Hampson to go into executive session for Non-Elected Personnel – Employment Contract to include City Manager, City Attorney and City Clerk for fifteen minutes to come back at 7:35 p.m. Yeas: All. No Action Taken.

OTHER DISCUSSION/MOTIONS.

Motion made by Dickinson, seconded by Hampson to adjourn. Yeas: All. Mayor declared the meeting adjourned at 7:36 p.m.

/s/ Ashley Kobe
Ashley Kobe, Executive Assistant

VENDOR SORT KEY	DATE	DESCRIPTION	FUND	DEPARTMENT	AMOUNT_
ACE PEST CONTROL LLC GARY COOPER	12/07/18	PEST CONTROL	GENERAL OPERATING	ADMINISTRATION	135.00
	12/07/18	PEST CONTROL	GENERAL OPERATING	CODES ENFORCEMENT	45.00
	12/07/18	PEST CONTROL	GENERAL OPERATING	POLICE	80.00
	12/07/18	PEST CONTROL	GENERAL OPERATING	CABIN	45.00
	12/07/18	PEST CONTROL	GENERAL OPERATING	LIBRARY	45.00
	12/07/18	PEST CONTROL	TOURISM	CABIN	45.00
	12/07/18	PEST CONTROL	GOLF COURSE	NON-DEPARTMENTAL	80.00
				TOTAL:	475.00
AES LAWN PARTS	12/31/18	CONTROL BRACKET	GENERAL OPERATING	STREETS & ALLEYS	29.00
	12/07/18	CARBURETOR	GENERAL OPERATING	STREETS & ALLEYS	158.76
				TOTAL:	187.76
ALL PHASE BUSINESS SUPPLIES INC	12/31/18	INGENICO	GOLF COURSE	NON-DEPARTMENTAL	335.64
				TOTAL:	335.64
ALTEC INDUSTRIES INC	12/07/18	BANANA PEELER	ELECTRIC	ELECTRIC DISTRIBUTION	245.61
	12/20/18	BOOM WIPES	ELECTRIC	ELECTRIC DISTRIBUTION	101.65
				TOTAL:	347.26
AMERICAN TEXTILE MILLS	12/31/18	WIPES	GENERAL OPERATING	PROPERTIES & MAINTENAN	442.65
				TOTAL:	442.65
ANIXTER INC	12/20/18	COVER	ELECTRIC	ELECTRIC DISTRIBUTION	122.85
	12/20/18	LED COBRA HEAD LIGHTS	ELECTRIC	ELECTRIC DISTRIBUTION	747.25
	12/31/18	METER	CIP - ELECTRIC	INVALID DEPARTMENT	198.00
	12/20/18	METER CAN	CIP - ELECTRIC	INVALID DEPARTMENT	465.00
				TOTAL:	1,533.10
APPARATUS SERVICES LLC	12/07/18	PACKING WAS ADJUSTED	GENERAL OPERATING	FIRE	81.30
	12/20/18	REPAIR REGULATOR, AIR LEAK	GENERAL OPERATING	FIRE	1,259.62
				TOTAL:	1,340.92
APPLIED MAINTENANCE SUPPLIES	12/20/18	SAFETY GLASSES	ELECTRIC	ELECTRIC DISTRIBUTION	174.09
				TOTAL:	174.09
ARROWHEAD SCIENTIFIC INC ARROWHEAD FOR	12/07/18	GLOVES	GENERAL OPERATING	POLICE	74.75
				TOTAL:	74.75
AT&T	12/07/18	RTU'S	ELECTRIC	ELECTRIC PRODUCTION	222.67
				TOTAL:	222.67
BAKER & TAYLOR	12/20/18	BOOKS	GENERAL OPERATING	LIBRARY	22.22
				TOTAL:	22.22
BORDER STATES INDUSTRIES	12/31/18	REDUCER/ADAPTER	ELECTRIC	ELECTRIC DISTRIBUTION	59.80
				TOTAL:	59.80
BRADLEY AIR CONDITIONING & HEATING	12/31/18	BLOWER CONTROL	GENERAL OPERATING	CODES ENFORCEMENT	222.70
				TOTAL:	222.70
BRENT'S GLASS CO.	12/31/18	WINDSHIELD	GENERAL OPERATING	POLICE	220.00
				TOTAL:	220.00
BREWER'S AUTOMOTIVE REPAIR INC	12/31/18	TOWING	GENERAL OPERATING	POLICE	141.00
	12/07/18	BATTERY	GENERAL OPERATING	POLICE	132.95

VENDOR SORT KEY	DATE	DESCRIPTION	FUND	DEPARTMENT	AMOUNT_
	12/31/18	BATTERY	GENERAL OPERATING	STREETS & ALLEYS	132.95
	12/07/18	TIRE DISPOSAL	GENERAL OPERATING	PROPERTIES & MAINTENAN	14.00
	12/20/18	BREWER'S AUTOMOTIVE REPAIR	GENERAL OPERATING	PROPERTIES & MAINTENAN	15.98
				TOTAL:	436.88
CARROT TOP INDUSTRIES INC	12/20/18	FLAG	TOURISM	CABIN	167.72
				TOTAL:	167.72
DON CAWBY	12/07/18	TRAVEL REIMBURSEMENT	GENERAL OPERATING	ADMINISTRATION	644.81
				TOTAL:	644.81
CENTURYLINK	12/07/18	LONG DISTANCE	GENERAL OPERATING	ADMINISTRATION	15.81
	12/07/18	LONG DISTANCE	GENERAL OPERATING	POLICE	18.24
				TOTAL:	34.05
CENTURYLINK	12/31/18	RTU'S	ELECTRIC	ELECTRIC PRODUCTION	236.56
				TOTAL:	236.56
CENTURYLINK	12/07/18	TELEPHONE SERVICE	GENERAL OPERATING	ADMINISTRATION	111.36
	12/07/18	TELEPHONE SERVCIE	GENERAL OPERATING	POLICE	115.37
	12/07/18	TELEPHONE SERVICE	GENERAL OPERATING	LIBRARY	115.33
	12/07/18	TELEPHONE SERVICE	GOLF COURSE	NON-DEPARTMENTAL	137.53
	12/07/18	TELEPHONE SERVICE	GOLF COURSE	NON-DEPARTMENTAL	56.56
				TOTAL:	536.15
CHAMPION BRANDS LLC	12/07/18	WIPER BLADES, OIL DRY	GENERAL OPERATING	PROPERTIES & MAINTENAN	71.02
	12/07/18	OIL	GENERAL OPERATING	PROPERTIES & MAINTENAN	65.76
	12/07/18	GLOVES	GENERAL OPERATING	PROPERTIES & MAINTENAN	190.80
	12/20/18	BLADES	GENERAL OPERATING	PROPERTIES & MAINTENAN	46.40
	12/20/18	TRANSMISSION FLUID	GENERAL OPERATING	PROPERTIES & MAINTENAN	560.10
	12/20/18	GLOVES	GENERAL OPERATING	PROPERTIES & MAINTENAN	95.40
	12/07/18	CONTAINER REFUND	GENERAL OPERATING	PROPERTIES & MAINTENAN	20.00
	12/07/18	OIL DRY	GENERAL OPERATING	FIRE	195.75
				TOTAL:	1,205.23
WANDA CHISAM	12/07/18	CLEANING OF OLD STONE CHUR	TOURISM	CABIN	442.00
				TOTAL:	442.00
CHRIS' CAFE	12/20/18	COOKIES, BROWNIES	GENERAL OPERATING	ADMINISTRATION	25.00
				TOTAL:	25.00
CITY ELECTRICAL SUPPLY COMPANY	12/31/18	WIRE LOCKING DEVICE	GENERAL OPERATING	ADMINISTRATION	144.04
	12/31/18	WIRE, BOX, CLAMP	GENERAL OPERATING	PROPERTIES & MAINTENAN	228.41
	12/31/18	COVER, JBOX	GENERAL OPERATING	PROPERTIES & MAINTENAN	48.72
	12/31/18	LED LAMPS	GENERAL OPERATING	LIBRARY	306.25
	12/07/18	ADAPTER, HUB, CLAMPS, NIPP	ELECTRIC	ELECTRIC DISTRIBUTION	532.20
	12/31/18	FILLER PLATE	ELECTRIC	ELECTRIC DISTRIBUTION	42.00
				TOTAL:	1,301.62
CITY OF BALDWIN CITY	12/31/18	MXU'S	WATER	WATER DISTRIBUTION	2,000.00
				TOTAL:	2,000.00
CITY OF OSAWATOMIE	12/07/18	KEADY-MEM HALL REFUND	GENERAL OPERATING	NON-DEPARTMENTAL	100.00
	12/07/18	MATHIS-MEM HALL REFUND	GENERAL OPERATING	NON-DEPARTMENTAL	100.00
	12/07/18	REFUND BONDS	GENERAL OPERATING	NON-DEPARTMENTAL	130.00
	12/07/18	FLEX SPENDING CARDS	GENERAL OPERATING	NON-DEPARTMENTAL	943.82

VENDOR SORT KEY	DATE	DESCRIPTION	FUND	DEPARTMENT	AMOUNT_
	12/27/18	FLEX SPENDING CARDS	GENERAL OPERATING	NON-DEPARTMENTAL	948.97
	12/07/18	UTILITIES	GENERAL OPERATING	ADMINISTRATION	352.92
	12/07/18	UTILITIES	GENERAL OPERATING	ADMINISTRATION	131.49
	12/07/18	CYNTHIA BRUNS-CHRISTMAS TR	GENERAL OPERATING	ADMINISTRATION	250.00
	12/07/18	DOLLAR GENERAL-SUPPLIES	GENERAL OPERATING	ADMINISTRATION	12.75
	12/07/18	SEAMANDS-MILEAGE, MEALS	GENERAL OPERATING	ADMINISTRATION	244.50
	12/07/18	UTILITIES	GENERAL OPERATING	POLICE	734.39
	12/07/18	ELLIS-MILEAGE	GENERAL OPERATING	POLICE	112.27
	12/07/18	UTILITIES	GENERAL OPERATING	CABIN	128.80
	12/07/18	UTILITIES	GENERAL OPERATING	STREETS & ALLEYS	830.36
	12/31/18	UTILITIES	GENERAL OPERATING	STREETS & ALLEYS	448.16
	12/07/18	UTILITIES	GENERAL OPERATING	PROPERTIES & MAINTENAN	94.09
	12/07/18	UTILITIES	GENERAL OPERATING	FIRE	113.89
	12/07/18	CHICKEN ANNIES-FIRE DEPT B	GENERAL OPERATING	FIRE	884.19
	12/07/18	UTILITIES	GENERAL OPERATING	LIBRARY	228.82
	12/07/18	FLEX SPENDING CARDS	WATER	NON-DEPARTMENTAL	123.64
	12/27/18	FLEX SPENDING CARDS	WATER	NON-DEPARTMENTAL	115.92
	12/07/18	UTILITIES	WATER	WATER TREATMENT	2,997.11
	12/07/18	UTILITIES	WATER	WATER DISTRIBUTION	1,166.78
	12/07/18	FLEX SPENDING CARDS	ELECTRIC	NON-DEPARTMENTAL	177.88
	12/27/18	FLEX SPENDING CARDS	ELECTRIC	NON-DEPARTMENTAL	177.88
	12/07/18	DEPOSIT REFUNDS	ELECTRIC	ELECTRIC ADMINISTRATIO	4,975.00
	12/07/18	DEPOSIT REFUNDS	ELECTRIC	ELECTRIC ADMINISTRATIO	93.83
	12/07/18	UTILITIES	ELECTRIC	ELECTRIC DISTRIBUTION	517.24
	12/07/18	FLEX SPENDING CARDS	SEWER	NON-DEPARTMENTAL	23.66
	12/27/18	FLEX SPENDING CARDS	SEWER	NON-DEPARTMENTAL	26.23
	12/07/18	UTILITIES	SEWER	NON-DEPARTMENTAL	3,045.88
	12/07/18	UTILITIES	TOURISM	CABIN	15.91
	12/07/18	FIRE WIVES-PARADE FLOAT	TOURISM	LIGHTS ON THE LAKE	50.00
	12/07/18	FLEX SPENDING CARDS	GOLF COURSE	NON-DEPARTMENTAL	38.46
	12/27/18	FLEX SPENDING CARDS	GOLF COURSE	NON-DEPARTMENTAL	38.46
				TOTAL:	20,373.30
CJ FEED & SUPPLY INC	12/07/18	BOOTS	WATER	WATER DISTRIBUTION	216.43
				TOTAL:	216.43
COLEMAN EQUIPMENT INC.	12/07/18	WHEEL	WATER	WATER DISTRIBUTION	242.25
				TOTAL:	242.25
CORE & MAIN LP	12/07/18	CORE & MAIN LP	WATER	WATER DISTRIBUTION	147.93
	12/31/18	CLAMP, BONNETT HOUSING	WATER	WATER DISTRIBUTION	780.39
	12/31/18	CABLE, COUPLER	WATER	WATER DISTRIBUTION	180.96
				TOTAL:	1,109.28
CORRECT CARE SOLUTIONS LLC	12/07/18	INMATE HEALTHCARE REPRICIN	GENERAL OPERATING	MUNICIPAL COURT	18.00
				TOTAL:	18.00
CYBERGOLF	12/07/18	WEBSITE HOSTING, EMAIL MAR	GOLF COURSE	NON-DEPARTMENTAL	285.00
	12/07/18	WEBSITE HOSTING, EMAIL MAR	GOLF COURSE	NON-DEPARTMENTAL	285.00
	12/07/18	WEBSITE HOSTING, EMAIL MAR	GOLF COURSE	NON-DEPARTMENTAL	285.00
	12/07/18	WEBSITE HOSTING EMAIL MARK	GOLF COURSE	NON-DEPARTMENTAL	285.00
				TOTAL:	1,140.00
DESIGN MECHANICAL INC	12/20/18	REPLACE IGNITION MODULE	GENERAL OPERATING	ADMINISTRATION	2,112.50
				TOTAL:	2,112.50

VENDOR SORT KEY	DATE	DESCRIPTION	FUND	DEPARTMENT	AMOUNT_
DISH NETWORK	12/20/18	SERVICES	GOLF COURSE	NON-DEPARTMENTAL	114.02_
				TOTAL:	114.02_
DONNA & VIOLA'S SHIRTS & ETC.	12/31/18	SWEATSHIRTS	GENERAL OPERATING	POLICE	150.70_
				TOTAL:	150.70_
DAVID DOSSEY	12/31/18	DAVID DOSSEY	GENERAL OPERATING	POLICE	1,400.00
	12/07/18	PD SERVER SET UP AND EXCHA	TECHNOLOGY FUND -	POLICE	1,400.00_
				TOTAL:	2,800.00
EFTPS	12/12/18	FEDERAL WITHHOLDINGS	GENERAL OPERATING	NON-DEPARTMENTAL	5,304.96
	12/27/18	FEDERAL WITHHOLDINGS	GENERAL OPERATING	NON-DEPARTMENTAL	5,242.88
	12/12/18	SOCIAL SECURITY WITHHOLDIN	GENERAL OPERATING	NON-DEPARTMENTAL	3,875.05
	12/27/18	SOCIAL SECURITY WITHHOLDIN	GENERAL OPERATING	NON-DEPARTMENTAL	4,142.27
	12/12/18	MEDICARE WITHHOLINGS	GENERAL OPERATING	NON-DEPARTMENTAL	906.31
	12/27/18	MEDICARE WITHHOLINGS	GENERAL OPERATING	NON-DEPARTMENTAL	968.85
	12/12/18	FEDERAL WITHHOLDINGS	WATER	NON-DEPARTMENTAL	587.34
	12/27/18	FEDERAL WITHHOLDINGS	WATER	NON-DEPARTMENTAL	769.07
	12/12/18	SOCIAL SECURITY WITHHOLDIN	WATER	NON-DEPARTMENTAL	484.92
	12/27/18	SOCIAL SECURITY WITHHOLDIN	WATER	NON-DEPARTMENTAL	488.37
	12/12/18	MEDICARE WITHHOLINGS	WATER	NON-DEPARTMENTAL	113.40
	12/27/18	MEDICARE WITHHOLINGS	WATER	NON-DEPARTMENTAL	114.23
	12/12/18	SOCIAL SECURITY WITHHOLDIN	WATER	WATER ADMINISTRATION	32.17
	12/27/18	SOCIAL SECURITY WITHHOLDIN	WATER	WATER ADMINISTRATION	32.22
	12/12/18	MEDICARE WITHHOLINGS	WATER	WATER ADMINISTRATION	7.52
	12/27/18	MEDICARE WITHHOLINGS	WATER	WATER ADMINISTRATION	7.53
	12/12/18	SOCIAL SECURITY WITHHOLDIN	WATER	WATER TREATMENT	200.14
	12/27/18	SOCIAL SECURITY WITHHOLDIN	WATER	WATER TREATMENT	262.52
	12/12/18	MEDICARE WITHHOLINGS	WATER	WATER TREATMENT	46.80
	12/27/18	MEDICARE WITHHOLINGS	WATER	WATER TREATMENT	61.40
	12/12/18	SOCIAL SECURITY WITHHOLDIN	WATER	WATER DISTRIBUTION	252.62
	12/27/18	SOCIAL SECURITY WITHHOLDIN	WATER	WATER DISTRIBUTION	193.65
	12/12/18	MEDICARE WITHHOLINGS	WATER	WATER DISTRIBUTION	59.09
	12/27/18	MEDICARE WITHHOLINGS	WATER	WATER DISTRIBUTION	45.30
	12/12/18	FEDERAL WITHHOLDINGS	ELECTRIC	NON-DEPARTMENTAL	854.88
	12/27/18	FEDERAL WITHHOLDINGS	ELECTRIC	NON-DEPARTMENTAL	1,026.46
	12/12/18	SOCIAL SECURITY WITHHOLDIN	ELECTRIC	NON-DEPARTMENTAL	714.78
	12/27/18	SOCIAL SECURITY WITHHOLDIN	ELECTRIC	NON-DEPARTMENTAL	775.87
	12/12/18	MEDICARE WITHHOLINGS	ELECTRIC	NON-DEPARTMENTAL	167.17
	12/27/18	MEDICARE WITHHOLINGS	ELECTRIC	NON-DEPARTMENTAL	181.45
	12/12/18	SOCIAL SECURITY WITHHOLDIN	ELECTRIC	ELECTRIC ADMINISTRATIO	48.26
	12/27/18	SOCIAL SECURITY WITHHOLDIN	ELECTRIC	ELECTRIC ADMINISTRATIO	48.33
	12/12/18	MEDICARE WITHHOLINGS	ELECTRIC	ELECTRIC ADMINISTRATIO	11.29
	12/27/18	MEDICARE WITHHOLINGS	ELECTRIC	ELECTRIC ADMINISTRATIO	11.30
	12/12/18	SOCIAL SECURITY WITHHOLDIN	ELECTRIC	ELECTRIC PRODUCTION	200.15
	12/27/18	SOCIAL SECURITY WITHHOLDIN	ELECTRIC	ELECTRIC PRODUCTION	262.52
	12/12/18	MEDICARE WITHHOLINGS	ELECTRIC	ELECTRIC PRODUCTION	46.81
	12/27/18	MEDICARE WITHHOLINGS	ELECTRIC	ELECTRIC PRODUCTION	61.40
	12/12/18	SOCIAL SECURITY WITHHOLDIN	ELECTRIC	ELECTRIC DISTRIBUTION	466.36
	12/27/18	SOCIAL SECURITY WITHHOLDIN	ELECTRIC	ELECTRIC DISTRIBUTION	465.00
	12/12/18	MEDICARE WITHHOLINGS	ELECTRIC	ELECTRIC DISTRIBUTION	109.07
	12/27/18	MEDICARE WITHHOLINGS	ELECTRIC	ELECTRIC DISTRIBUTION	108.76
	12/12/18	FEDERAL WITHHOLDINGS	SEWER	NON-DEPARTMENTAL	406.71
	12/27/18	FEDERAL WITHHOLDINGS	SEWER	NON-DEPARTMENTAL	368.54
	12/12/18	SOCIAL SECURITY WITHHOLDIN	SEWER	NON-DEPARTMENTAL	264.28
	12/27/18	SOCIAL SECURITY WITHHOLDIN	SEWER	NON-DEPARTMENTAL	253.33

VENDOR SORT KEY	DATE	DESCRIPTION	FUND	DEPARTMENT	AMOUNT_
	12/12/18	MEDICARE WITHHOLINGS	SEWER	NON-DEPARTMENTAL	61.79
	12/27/18	MEDICARE WITHHOLINGS	SEWER	NON-DEPARTMENTAL	59.23
	12/12/18	SOCIAL SECURITY WITHHOLDIN	SEWER	NON-DEPARTMENTAL	264.30
	12/27/18	SOCIAL SECURITY WITHHOLDIN	SEWER	NON-DEPARTMENTAL	253.33
	12/12/18	MEDICARE WITHHOLINGS	SEWER	NON-DEPARTMENTAL	61.79
	12/27/18	MEDICARE WITHHOLINGS	SEWER	NON-DEPARTMENTAL	59.23
	12/12/18	FEDERAL WITHHOLDINGS	GOLF COURSE	NON-DEPARTMENTAL	90.76
	12/27/18	FEDERAL WITHHOLDINGS	GOLF COURSE	NON-DEPARTMENTAL	135.22
	12/12/18	SOCIAL SECURITY WITHHOLDIN	GOLF COURSE	NON-DEPARTMENTAL	206.30
	12/27/18	SOCIAL SECURITY WITHHOLDIN	GOLF COURSE	NON-DEPARTMENTAL	233.11
	12/12/18	MEDICARE WITHHOLINGS	GOLF COURSE	NON-DEPARTMENTAL	48.24
	12/27/18	MEDICARE WITHHOLINGS	GOLF COURSE	NON-DEPARTMENTAL	54.51
	12/12/18	SOCIAL SECURITY WITHHOLDIN	EMPLOYEE BENEFITS	NON-DEPARTMENTAL	4,081.33
	12/27/18	SOCIAL SECURITY WITHHOLDIN	EMPLOYEE BENEFITS	NON-DEPARTMENTAL	4,375.38
	12/12/18	MEDICARE WITHHOLINGS	EMPLOYEE BENEFITS	NON-DEPARTMENTAL	954.54
	12/27/18	MEDICARE WITHHOLINGS	EMPLOYEE BENEFITS	NON-DEPARTMENTAL	1,023.35
				TOTAL:	43,013.74
ELECTRONICS SUPPLY COMPANY	12/07/18	NETWORK CARD, RACK, BATTER	CIP - GRANTS	ADMINISTRATION	3,095.14
				TOTAL:	3,095.14
EMG INC	12/20/18	ENERGY CONSULTING	ELECTRIC	ELECTRIC ADMINISTRATIO	1,000.55
				TOTAL:	1,000.55
FAMILY CENTER FARM & HOME	12/20/18	DOG FOOD	GENERAL OPERATING	POLICE	43.99
	12/31/18	NUTS, BOLTS	GENERAL OPERATING	STREETS & ALLEYS	13.24
	12/07/18	GARDEN HOSE FAUCET EXTENSI	GENERAL OPERATING	PROPERTIES & MAINTENAN	13.95
	12/07/18	CONDUIT PVC	GENERAL OPERATING	PROPERTIES & MAINTENAN	29.88
	12/31/18	HERBICIDE	GENERAL OPERATING	PROPERTIES & MAINTENAN	31.90
	12/07/18	WIRE, PLUG	WATER	WATER TREATMENT	28.79
	12/20/18	PEX PIPE	WATER	WATER TREATMENT	4.98
	12/20/18	PROPANE TORCH, ADAPTER	WATER	WATER TREATMENT	74.53
	12/07/18	NUTS, BOLTS AND MISC	WATER	WATER DISTRIBUTION	4.13
	12/31/18	PRESSURE GUAGE	ELECTRIC	ELECTRIC DISTRIBUTION	20.94
	12/20/18	ROPE	TOURISM	CABIN	19.90
				TOTAL:	286.23
FAMILY MEDICINE CLINICS OF MCMC	12/31/18	PREEMPLOYMENT PHYSICAL	GENERAL OPERATING	POLICE	45.00
	12/31/18	PREEMPLOYMENT PHYSICAL	GENERAL OPERATING	FIRE	45.00
				TOTAL:	90.00
FBI-LEEDA	2/28/18	REGISTRATION -	GENERAL OPERATING	POLICE	650.00
				TOTAL:	650.00
FIRST OPTION BANK	12/26/18	HILTON-DON CAWBY	GENERAL OPERATING	ADMINISTRATION	370.53
	12/26/18	AMAZON PRIME	GENERAL OPERATING	ADMINISTRATION	119.00
	12/26/18	ID CARD BADGE HOLDERS	GENERAL OPERATING	ADMINISTRATION	13.98
	12/26/18	DOUBLETREE-TAMMY SEAMANDS	GENERAL OPERATING	ADMINISTRATION	587.25
	12/26/18	OFFICE FURNITURE	GENERAL OPERATING	ADMINISTRATION	550.00
	12/26/18	CHRISTMAS TREE STAR	GENERAL OPERATING	ADMINISTRATION	32.68
	12/26/18	RACK MOUNT SHELF	GENERAL OPERATING	ADMINISTRATION	59.95
	12/26/18	THERMAL COMPOUND	GENERAL OPERATING	ADMINISTRATION	8.90
	12/26/18	KC CYBER SECURITY CONFERENC	GENERAL OPERATING	ADMINISTRATION	150.00
	12/26/18	KEYBOARD	GENERAL OPERATING	ADMINISTRATION	14.99
	12/26/18	MEALS, LODGING, VINYL, MIC	GENERAL OPERATING	ADMINISTRATION	0.00
	12/26/18	CAT LITTER, DOG LEASE, RID	GENERAL OPERATING	CODES ENFORCEMENT	59.93

VENDOR SORT KEY	DATE	DESCRIPTION	FUND	DEPARTMENT	AMOUNT_
	12/26/18	MICROSOFT OFFICE	GENERAL OPERATING	CODES ENFORCEMENT	229.99
	12/26/18	LAPTOP MOUNT	GENERAL OPERATING	CODES ENFORCEMENT	156.30
	12/26/18	GRAPHIC CARD	GENERAL OPERATING	CODES ENFORCEMENT	43.98
	12/26/18	FUEL	GENERAL OPERATING	POLICE	24.00
	12/26/18	CORE PROCESSOR SOCKET	GENERAL OPERATING	POLICE	48.99
	12/26/18	DELL CONTROLLER WITH CABLE	GENERAL OPERATING	POLICE	114.00
	12/26/18	HARD DRIVE	GENERAL OPERATING	POLICE	199.26
	12/26/18	HOLSTER	GENERAL OPERATING	POLICE	32.00
	12/26/18	PLATES, KLEENEX, SPOONS	GENERAL OPERATING	POLICE	48.10
	12/26/18	ACOUSTIC TUBE	GENERAL OPERATING	POLICE	18.99
	12/26/18	LEASH	GENERAL OPERATING	POLICE	13.28
	12/26/18	CADDY TRAY	GENERAL OPERATING	POLICE	45.08
	12/26/18	DELL POWER EDGE SERVER	GENERAL OPERATING	POLICE	195.31
	12/26/18	CABLE FOR DELL POWEREDG	GENERAL OPERATING	POLICE	23.99
	12/26/18	DOORBELL DIODES	GENERAL OPERATING	POLICE	5.83
	12/26/18	DELL MOUNTING BRACKET ADAP	GENERAL OPERATING	POLICE	7.50
	12/26/18	HARD DRIVE	GENERAL OPERATING	POLICE	39.90
	12/26/18	KEYBOARD	GENERAL OPERATING	POLICE	14.99
	12/26/18	EMERYS	GENERAL OPERATING	STREETS & ALLEYS	36.98
	12/26/18	LODGING-BLAKE MADDEN	GENERAL OPERATING	STREETS & ALLEYS	126.39
	12/26/18	SYSTEM	GENERAL OPERATING	STREETS & ALLEYS	135.00
	12/26/18	LA HACIENDA	GENERAL OPERATING	STREETS & ALLEYS	47.73
	12/26/18	MCDONALDS	GENERAL OPERATING	STREETS & ALLEYS	8.98
	12/26/18	EMERYS	GENERAL OPERATING	PROPERTIES & MAINTENAN	36.98
	12/26/18	LA HACIENDA	GENERAL OPERATING	PROPERTIES & MAINTENAN	47.73
	12/26/18	7 WAY PLUG	GENERAL OPERATING	PROPERTIES & MAINTENAN	62.00
	12/26/18	PATCHES	GENERAL OPERATING	FIRE	455.99
	12/26/18	COMMON BOARD, GRIT SHEET	GENERAL OPERATING	LIBRARY	73.38
	12/26/18	VINYL	GENERAL OPERATING	LIBRARY	60.00
	12/26/18	VINYL	GENERAL OPERATING	LIBRARY	12.60
	12/26/18	MOD PODGE, ORNAMENTS	GENERAL OPERATING	LIBRARY	178.98
	12/26/18	BOOK	GENERAL OPERATING	LIBRARY	17.49
	12/26/18	MISC	GENERAL OPERATING	LIBRARY	74.54
	12/26/18	BOOKS	GENERAL OPERATING	LIBRARY	33.96
	12/26/18	CANVAS	GENERAL OPERATING	LIBRARY	44.96
	12/26/18	BOOKS	GENERAL OPERATING	LIBRARY	55.47
	12/26/18	WINE BOTTLES WITH CORKS	GENERAL OPERATING	LIBRARY	52.89
	12/26/18	BOOKS	GENERAL OPERATING	LIBRARY	40.88
	12/26/18	FOOD SCALE	GENERAL OPERATING	LIBRARY	28.66
	12/26/18	BOOKS	GENERAL OPERATING	LIBRARY	28.22
	12/26/18	BATH SALT SPOON	GENERAL OPERATING	LIBRARY	14.99
	12/26/18	PROTECTIVE LINER COVERING	GENERAL OPERATING	LIBRARY	32.52
	12/26/18	HEADBANDS	GENERAL OPERATING	LIBRARY	9.99
	12/26/18	BOOKS	GENERAL OPERATING	LIBRARY	90.52
	12/26/18	EARPIECE REPLACEMENT	GENERAL OPERATING	LIBRARY	29.72
	12/26/18	SPEAKER MIC	GENERAL OPERATING	LIBRARY	119.85
	12/26/18	UPS-POSTAGE	WATER	WATER TREATMENT	9.85
	12/26/18	UPS - POSTAGE	WATER	WATER TREATMENT	10.39
	12/26/18	EMERYS	WATER	WATER DISTRIBUTION	36.04
	12/26/18	MICROWAVE	WATER	WATER DISTRIBUTION	64.84
	12/26/18	LA HACIENDA	WATER	WATER DISTRIBUTION	47.75
	12/26/18	SPORTS PAGE - LUNCH	WATER	WATER DISTRIBUTION	30.00
	12/26/18	WET DRY VAC, DRILL	SEWER	NON-DEPARTMENTAL	248.00
				TOTAL:	5,632.97
FT SCOTT COMMUNITY COLLEGE	12/31/18	WATER CERTIFICATE PREP	WATER	WATER TREATMENT	140.00

VENDOR SORT KEY	DATE	DESCRIPTION	FUND	DEPARTMENT	AMOUNT
				TOTAL:	140.00
GALL'S INC	12/20/18	JACKETS	GENERAL OPERATING	POLICE	191.99
	12/31/18	K-9 HANDLER COMMENDATION B	GENERAL OPERATING	POLICE	21.11
	12/07/18	HANCUFFS, BATON	GENERAL OPERATING	POLICE	279.08
				TOTAL:	492.18
GEARZONE PRODUCTS	12/20/18	PANTS, POLO, SHIRT	GENERAL OPERATING	POLICE	208.95
	12/20/18	PATCHES	GENERAL OPERATING	POLICE	350.00
	12/31/18	HAND CUFFS	GENERAL OPERATING	POLICE	122.40
				TOTAL:	681.35
GERKEN RENT-ALL INC	12/20/18	APPLIANCE DOLLY, TRAILER	GENERAL OPERATING	ADMINISTRATION	64.80
				TOTAL:	64.80
MARK GOVEA	12/20/18	LODGING	GENERAL OPERATING	ADMINISTRATION	116.15
				TOTAL:	116.15
GRAINGER W.W. INC	12/07/18	PUMP	GENERAL OPERATING	STREETS & ALLEYS	584.50
	12/07/18	MOTOR	GENERAL OPERATING	STREETS & ALLEYS	184.75
	12/07/18	MOTOR CAP	GENERAL OPERATING	STREETS & ALLEYS	205.50
	12/07/18	MOTOR	GENERAL OPERATING	STREETS & ALLEYS	184.75
	12/07/18	MOTOR CAP	GENERAL OPERATING	STREETS & ALLEYS	205.50
				TOTAL:	584.50
GUARDIAN	12/31/18	INSURANCE PAYABLE	GENERAL OPERATING	NON-DEPARTMENTAL	155.67
	12/31/18	INSURANCE PAYABLE	GENERAL OPERATING	NON-DEPARTMENTAL	161.64
	12/31/18	CRITICAL ILL INS PAYABLE	GENERAL OPERATING	NON-DEPARTMENTAL	104.33
	12/31/18	CRITICAL ILL INS PAYABLE	GENERAL OPERATING	NON-DEPARTMENTAL	104.97
	12/31/18	DISABILITY INSURANCE	GENERAL OPERATING	NON-DEPARTMENTAL	65.95
	12/31/18	DISABILITY INSURANCE	GENERAL OPERATING	NON-DEPARTMENTAL	66.95
	12/31/18	DENTAL INSURANCE	GENERAL OPERATING	NON-DEPARTMENTAL	280.90
	12/31/18	DENTAL INSURANCE	GENERAL OPERATING	NON-DEPARTMENTAL	284.45
	12/31/18	EMPLOYEE LIFE INSURANCE	GENERAL OPERATING	NON-DEPARTMENTAL	159.17
	12/31/18	EMPLOYEE LIFE INSURANCE	GENERAL OPERATING	NON-DEPARTMENTAL	161.50
	12/31/18	VISION INSURANCE	GENERAL OPERATING	NON-DEPARTMENTAL	56.56
	12/31/18	VISION INSURANCE	GENERAL OPERATING	NON-DEPARTMENTAL	57.36
	12/31/18	INSURANCE PAYABLE	WATER	NON-DEPARTMENTAL	47.71
	12/31/18	INSURANCE PAYABLE	WATER	NON-DEPARTMENTAL	44.42
	12/31/18	CRITICAL ILL INS PAYABLE	WATER	NON-DEPARTMENTAL	18.41
	12/31/18	CRITICAL ILL INS PAYABLE	WATER	NON-DEPARTMENTAL	17.45
	12/31/18	DISABILITY INSURANCE	WATER	NON-DEPARTMENTAL	23.95
	12/31/18	DISABILITY INSURANCE	WATER	NON-DEPARTMENTAL	22.45
	12/31/18	DENTAL INSURANCE	WATER	NON-DEPARTMENTAL	48.36
	12/31/18	DENTAL INSURANCE	WATER	NON-DEPARTMENTAL	46.38
	12/31/18	EMPLOYEE LIFE INSURANCE	WATER	NON-DEPARTMENTAL	43.87
	12/31/18	EMPLOYEE LIFE INSURANCE	WATER	NON-DEPARTMENTAL	40.40
	12/31/18	VISION INSURANCE	WATER	NON-DEPARTMENTAL	10.47
	12/31/18	VISION INSURANCE	WATER	NON-DEPARTMENTAL	10.03
	12/31/18	INSURANCE PAYABLE	ELECTRIC	NON-DEPARTMENTAL	104.50
	12/31/18	INSURANCE PAYABLE	ELECTRIC	NON-DEPARTMENTAL	100.72
	12/31/18	CRITICAL ILL INS PAYABLE	ELECTRIC	NON-DEPARTMENTAL	10.89
	12/31/18	CRITICAL ILL INS PAYABLE	ELECTRIC	NON-DEPARTMENTAL	10.89
	12/31/18	DISABILITY INSURANCE	ELECTRIC	NON-DEPARTMENTAL	8.44
	12/31/18	DISABILITY INSURANCE	ELECTRIC	NON-DEPARTMENTAL	8.44
	12/31/18	DENTAL INSURANCE	ELECTRIC	NON-DEPARTMENTAL	74.06

VENDOR SORT KEY	DATE	DESCRIPTION	FUND	DEPARTMENT	AMOUNT_
	12/31/18	DENTAL INSURANCE	ELECTRIC	NON-DEPARTMENTAL	71.84
	12/31/18	EMPLOYEE LIFE INSURANCE	ELECTRIC	NON-DEPARTMENTAL	31.32
	12/31/18	EMPLOYEE LIFE INSURANCE	ELECTRIC	NON-DEPARTMENTAL	31.32
	12/31/18	VISION INSURANCE	ELECTRIC	NON-DEPARTMENTAL	15.98
	12/31/18	VISION INSURANCE	ELECTRIC	NON-DEPARTMENTAL	15.49
	12/31/18	INSURANCE PAYABLE	SEWER	NON-DEPARTMENTAL	27.14
	12/31/18	INSURANCE PAYABLE	SEWER	NON-DEPARTMENTAL	28.24
	12/31/18	CRITICAL ILL INS PAYABLE	SEWER	NON-DEPARTMENTAL	2.97
	12/31/18	CRITICAL ILL INS PAYABLE	SEWER	NON-DEPARTMENTAL	3.29
	12/31/18	DISABILITY INSURANCE	SEWER	NON-DEPARTMENTAL	6.51
	12/31/18	DISABILITY INSURANCE	SEWER	NON-DEPARTMENTAL	7.01
	12/31/18	DENTAL INSURANCE	SEWER	NON-DEPARTMENTAL	16.98
	12/31/18	DENTAL INSURANCE	SEWER	NON-DEPARTMENTAL	17.63
	12/31/18	EMPLOYEE LIFE INSURANCE	SEWER	NON-DEPARTMENTAL	10.66
	12/31/18	EMPLOYEE LIFE INSURANCE	SEWER	NON-DEPARTMENTAL	11.80
	12/31/18	VISION INSURANCE	SEWER	NON-DEPARTMENTAL	3.72
	12/31/18	VISION INSURANCE	SEWER	NON-DEPARTMENTAL	3.85
	12/31/18	INSURANCE	SEWER	NON-DEPARTMENTAL	674.92
	12/31/18	INSURANCE PAYABLE	GOLF COURSE	NON-DEPARTMENTAL	10.94
	12/31/18	INSURANCE PAYABLE	GOLF COURSE	NON-DEPARTMENTAL	10.94
	12/31/18	DISABILITY INSURANCE	GOLF COURSE	NON-DEPARTMENTAL	5.19
	12/31/18	DISABILITY INSURANCE	GOLF COURSE	NON-DEPARTMENTAL	5.19
	12/31/18	DENTAL INSURANCE	GOLF COURSE	NON-DEPARTMENTAL	38.83
	12/31/18	DENTAL INSURANCE	GOLF COURSE	NON-DEPARTMENTAL	38.83
	12/31/18	EMPLOYEE LIFE INSURANCE	GOLF COURSE	NON-DEPARTMENTAL	26.61
	12/31/18	EMPLOYEE LIFE INSURANCE	GOLF COURSE	NON-DEPARTMENTAL	26.61
	12/31/18	VISION INSURANCE	GOLF COURSE	NON-DEPARTMENTAL	6.75
	12/31/18	VISION INSURANCE	GOLF COURSE	NON-DEPARTMENTAL	6.75
	12/31/18	DENTAL INSURANCE	EMPLOYEE BENEFITS	NON-DEPARTMENTAL	921.58
	12/31/18	DENTAL INSURANCE	EMPLOYEE BENEFITS	NON-DEPARTMENTAL	921.58
	12/04/18	INSURANCE	EMPLOYEE BENEFITS	NON-DEPARTMENTAL	188.31
	12/04/18	INSURANCE	EMPLOYEE BENEFITS	NON-DEPARTMENTAL	3,622.95
	12/04/18	INSURANCE	EMPLOYEE BENEFITS	NON-DEPARTMENTAL	677.78
	12/04/18	INSURANCE	EMPLOYEE BENEFITS	NON-DEPARTMENTAL	2,064.86
	12/31/18	VISION INSURANCE	EMPLOYEE BENEFITS	NON-DEPARTMENTAL	185.22
	12/31/18	VISION INSURANCE	EMPLOYEE BENEFITS	NON-DEPARTMENTAL	185.22
				TOTAL:	12,276.10
PHANES FLORIST & GREENHOUSE	12/07/18	CHAMBER DINNER CENTERPIECE	GENERAL OPERATING	ADMINISTRATION	25.00
				TOTAL:	25.00
HAWKINS INC	12/07/18	CARBON, AQUA HAWK, AZONE	WATER	WATER TREATMENT	4,394.03
	12/20/18	AZONE	WATER	WATER TREATMENT	633.50
	12/31/18	AQUA HAWK, AZONE	WATER	WATER TREATMENT	3,671.50
				TOTAL:	8,699.03
HEARTLAND ELECTRIC CORPORATION	12/20/18	REPLACE BELT COMPRESSOR	SEWER	NON-DEPARTMENTAL	1,977.21
	12/20/18	UV LIGHTING PROJECT	SEWER	NON-DEPARTMENTAL	480.00
				TOTAL:	2,457.21
HUMANA INSURANCE CO.	12/31/18	MEDICAL INSURANCE	GENERAL OPERATING	NON-DEPARTMENTAL	1,561.12
	12/31/18	MEDICAL INSURANCE	GENERAL OPERATING	NON-DEPARTMENTAL	1,582.32
	12/31/18	MEDICAL INSURANCE	GENERAL OPERATING	NON-DEPARTMENTAL	1,586.83
	12/31/18	MEDICAL INSURANCE	GENERAL OPERATING	NON-DEPARTMENTAL	1,616.27
	12/31/18	MEDICAL INSURANCE	GENERAL OPERATING	NON-DEPARTMENTAL	219.88
	12/31/18	MEDICAL INSURANCE	GENERAL OPERATING	NON-DEPARTMENTAL	219.88

VENDOR SORT KEY	DATE	DESCRIPTION	FUND	DEPARTMENT	AMOUNT
	12/31/18	MEDICAL INSURANCE	WATER	NON-DEPARTMENTAL	513.31
	12/31/18	MEDICAL INSURANCE	WATER	NON-DEPARTMENTAL	481.54
	12/31/18	MEDICAL INSURANCE	WATER	NON-DEPARTMENTAL	119.50
	12/31/18	MEDICAL INSURANCE	WATER	NON-DEPARTMENTAL	119.50
	12/31/18	MEDICAL INSURANCE	WATER	NON-DEPARTMENTAL	33.83
	12/31/18	MEDICAL INSURANCE	WATER	NON-DEPARTMENTAL	33.83
	12/31/18	MEDICAL INSURANCE	ELECTRIC	NON-DEPARTMENTAL	299.55
	12/31/18	MEDICAL INSURANCE	ELECTRIC	NON-DEPARTMENTAL	299.55
	12/31/18	MEDICAL INSURANCE	ELECTRIC	NON-DEPARTMENTAL	617.30
	12/31/18	MEDICAL INSURANCE	ELECTRIC	NON-DEPARTMENTAL	587.86
	12/31/18	MEDICAL INSURANCE	ELECTRIC	NON-DEPARTMENTAL	50.74
	12/31/18	MEDICAL INSURANCE	ELECTRIC	NON-DEPARTMENTAL	50.74
	12/31/18	MEDICAL INSURANCE	SEWER	NON-DEPARTMENTAL	217.32
	12/31/18	MEDICAL INSURANCE	SEWER	NON-DEPARTMENTAL	227.89
	12/31/18	MEDICAL INSURANCE	SEWER	NON-DEPARTMENTAL	8.99
	12/31/18	MEDICAL INSURANCE	SEWER	NON-DEPARTMENTAL	8.99
	12/31/18	MEDICAL INSURANCE	SEWER	NON-DEPARTMENTAL	33.83
	12/31/18	MEDICAL INSURANCE	SEWER	NON-DEPARTMENTAL	33.83
	12/31/18	HEALTH INSURANCE	SEWER	NON-DEPARTMENTAL	4,412.83
	12/31/18	MEDICAL INSURANCE	GOLF COURSE	NON-DEPARTMENTAL	136.89
	12/31/18	MEDICAL INSURANCE	GOLF COURSE	NON-DEPARTMENTAL	136.89
	12/31/18	MEDICAL INSURANCE	GOLF COURSE	NON-DEPARTMENTAL	312.69
	12/31/18	MEDICAL INSURANCE	GOLF COURSE	NON-DEPARTMENTAL	312.69
	12/31/18	MEDICAL INSURANCE	EMPLOYEE BENEFITS	NON-DEPARTMENTAL	5,089.32
	12/31/18	MEDICAL INSURANCE	EMPLOYEE BENEFITS	NON-DEPARTMENTAL	5,089.32
	12/31/18	MEDICAL INSURANCE	EMPLOYEE BENEFITS	NON-DEPARTMENTAL	5,315.83
	12/31/18	MEDICAL INSURANCE	EMPLOYEE BENEFITS	NON-DEPARTMENTAL	5,315.83
	12/31/18	MEDICAL INSURANCE	EMPLOYEE BENEFITS	NON-DEPARTMENTAL	619.70
	12/31/18	MEDICAL INSURANCE	EMPLOYEE BENEFITS	NON-DEPARTMENTAL	619.70
	12/04/18	INSURANCE	EMPLOYEE BENEFITS	NON-DEPARTMENTAL	37,652.63
				TOTAL:	75,538.72
INLAND TRUCK PARTS CO.	12/07/18	REPAIR PARKING BRAKE VALVE	GENERAL OPERATING	STREETS & ALLEYS	3,949.80
	12/31/18	ADJUSTBRAKES, REPAIR HORN	GENERAL OPERATING	STREETS & ALLEYS	623.59
				TOTAL:	4,573.39
INTERSTATE PRODUCTS, INC.	12/31/18	550 GALLON SUMP W/DRAIN	CIP - ELECTRIC	INVALID DEPARTMENT	2,545.44
				TOTAL:	2,545.44
JIVE COMMUNICATIONS INC	12/07/18	TELEPHONE SERVICES	GENERAL OPERATING	ADMINISTRATION	173.78
	12/07/18	TELEPHONE SERVICES	GENERAL OPERATING	CODES ENFORCEMENT	40.08
	12/07/18	TELEPHONE SERVICES	GENERAL OPERATING	POLICE	407.20
	12/07/18	TELEPHONE SERVICES	GENERAL OPERATING	CABIN	20.29
	12/07/18	TELEPHONE SERVICES	GENERAL OPERATING	STREETS & ALLEYS	60.28
	12/07/18	TELEPHONE SERVICES	GENERAL OPERATING	PROPERTIES & MAINTENAN	20.09
	12/07/18	TELEPHONE SERVICES	GENERAL OPERATING	FIRE	40.58
	12/07/18	TELEPHONE SERVICES	GENERAL OPERATING	LIBRARY	60.63
	12/07/18	TELEPHONE SERVICES	WATER	WATER TREATMENT	30.31
	12/07/18	TELEPHONE SERVICES	WATER	WATER DISTRIBUTION	20.09
	12/07/18	TELEPHONE SERVICES	ELECTRIC	ELECTRIC PRODUCTION	30.31
	12/07/18	TELEPHONE SERVICES	ELECTRIC	ELECTRIC DISTRIBUTION	20.54
	12/07/18	TELEPHONE SERVICES	SEWER	NON-DEPARTMENTAL	20.29
	12/07/18	TELEPHONE SERVICES	GOLF COURSE	NON-DEPARTMENTAL	20.29
				TOTAL:	964.76
KANSAS CITY POWER & LIGHT CO.	12/31/18	UTILITIES	GENERAL OPERATING	ADMINISTRATION	18.36

VENDOR SORT KEY	DATE	DESCRIPTION	FUND	DEPARTMENT	AMOUNT_
	12/31/18	UTILITIES	GENERAL OPERATING	CODES ENFORCEMENT	502.08
	12/31/18	UTILITIES	GENERAL OPERATING	PROPERTIES & MAINTENAN	18.36
	12/31/18	UTILITIES	ELECTRIC	ELECTRIC PRODUCTION	52.78
	12/31/18	UTILITIES	TOURISM	CABIN	18.36
	12/31/18	UTILITIES	GOLF COURSE	NON-DEPARTMENTAL	898.10
				TOTAL:	1,508.04
KANSAS CITY WILBERT	SI FUNERAL SERV	12/07/18 GRAVE OPENING	GENERAL OPERATING	PROPERTIES & MAINTENAN	525.00
		12/07/18 GRAVE OPENING	GENERAL OPERATING	PROPERTIES & MAINTENAN	645.00
		12/07/18 GRAVE OPENINGS	GENERAL OPERATING	PROPERTIES & MAINTENAN	525.00
				TOTAL:	1,695.00
KANSAS DEPT OF COMMERCE		12/07/18 KANSAS DEPT OF COMMERCE	INDUSTRIAL PROMOTI	NON-DEPARTMENTAL	1,000.00
				TOTAL:	1,000.00
KANSAS DEPT OF HEALTH & ENVIRO		12/07/18 FIELD LABORATORY ACCREDIAT	SEWER	NON-DEPARTMENTAL	200.00
				TOTAL:	200.00
KANSAS DEPT OF REVENUE		12/12/18 KS WITHHOLDINGS	GENERAL OPERATING	NON-DEPARTMENTAL	2,356.92
		12/27/18 KS WITHHOLDINGS	GENERAL OPERATING	NON-DEPARTMENTAL	2,315.91
		12/12/18 KS WITHHOLDINGS	WATER	NON-DEPARTMENTAL	287.98
		12/27/18 KS WITHHOLDINGS	WATER	NON-DEPARTMENTAL	303.98
		12/12/18 KS WITHHOLDINGS	ELECTRIC	NON-DEPARTMENTAL	453.16
		12/27/18 KS WITHHOLDINGS	ELECTRIC	NON-DEPARTMENTAL	516.11
		12/26/18 SALES TAX	ELECTRIC	ELECTRIC ADMINISTRATIO	1,056.17
		12/26/18 SALES TAX	ELECTRIC	ELECTRIC ADMINISTRATIO	2,323.77
		12/26/18 SALES TAX	ELECTRIC	ELECTRIC ADMINISTRATIO	3,485.65
		12/26/18 SALES TAX	ELECTRIC	ELECTRIC ADMINISTRATIO	3,638.08
		12/26/18 COMP USE TAX	ELECTRIC	ELECTRIC ADMINISTRATIO	1,168.64
		12/12/18 KS WITHHOLDINGS	SEWER	NON-DEPARTMENTAL	171.92
		12/27/18 KS WITHHOLDINGS	SEWER	NON-DEPARTMENTAL	158.99
		12/12/18 KS WITHHOLDINGS	GOLF COURSE	NON-DEPARTMENTAL	105.86
		12/27/18 KS WITHHOLDINGS	GOLF COURSE	NON-DEPARTMENTAL	118.98
		12/26/18 SALES TAX	GOLF COURSE	NON-DEPARTMENTAL	48.21
		12/26/18 SALES TAX	GOLF COURSE	NON-DEPARTMENTAL	72.31
		12/26/18 SALES TAX	GOLF COURSE	NON-DEPARTMENTAL	313.34
				TOTAL:	18,895.98
KANSAS GAS SERVICE		12/31/18 UTILITIES	GENERAL OPERATING	ADMINISTRATION	2,083.45
		12/31/18 UTILITIES	GENERAL OPERATING	ADMINISTRATION	374.51
		12/31/18 UTILITIES	GENERAL OPERATING	POLICE	52.75
		12/31/18 UTILITIES	GENERAL OPERATING	CABIN	360.93
		12/31/18 UTILITIES	GENERAL OPERATING	STREETS & ALLEYS	511.78
		12/31/18 UTILITIES	GENERAL OPERATING	FIRE	127.12
		12/31/18 UTILITIES	GENERAL OPERATING	LIBRARY	212.85
		12/31/18 UTILITIES	ELECTRIC	ELECTRIC PRODUCTION	56.30
		12/31/18 UTILITIES	ELECTRIC	ELECTRIC PRODUCTION	3,649.62
		12/31/18 UTILITIES	ELECTRIC	ELECTRIC DISTRIBUTION	381.35
		12/31/18 UTILITIES	TOURISM	CABIN	187.53
				TOTAL:	7,998.19
KANSAS ONE CALL SYSTEM INC		12/07/18 LOCATES	WATER	WATER DISTRIBUTION	9.20
		12/07/18 LOCATES	ELECTRIC	ELECTRIC DISTRIBUTION	9.20
		12/07/18 LOCATES	SEWER	NON-DEPARTMENTAL	9.20
				TOTAL:	27.60

VENDOR SORT KEY	DATE	DESCRIPTION	FUND	DEPARTMENT	AMOUNT	
KANSAS PAYMENT CENTER	12/07/18	CHILD SUPPORT	GENERAL OPERATING	NON-DEPARTMENTAL	399.35	
	12/27/18	CHILD SUPPORT	GENERAL OPERATING	NON-DEPARTMENTAL	399.35	
	12/07/18	CHILD SUPPORT	WATER	NON-DEPARTMENTAL	78.25	
	12/27/18	CHILD SUPPORT	WATER	NON-DEPARTMENTAL	78.25	
	12/07/18	CHILD SUPPORT	WATER	NON-DEPARTMENTAL	59.77	
	12/27/18	CHILD SUPPORT	WATER	NON-DEPARTMENTAL	59.77	
	12/07/18	CHILD SUPPORT	ELECTRIC	NON-DEPARTMENTAL	78.25	
	12/27/18	CHILD SUPPORT	ELECTRIC	NON-DEPARTMENTAL	78.25	
	12/07/18	CHILD SUPPORT	ELECTRIC	NON-DEPARTMENTAL	59.77	
	12/27/18	CHILD SUPPORT	ELECTRIC	NON-DEPARTMENTAL	59.77	
				TOTAL:		1,350.78
	KANSAS STATE TREASURER	12/20/18	TRAINING FUNDS	GENERAL OPERATING	MUNICIPAL COURT	1,351.00
					TOTAL:	1,351.00
KASPER AUTO PARTS	12/20/18	FUEL FILTER	GENERAL OPERATING	CODES ENFORCEMENT	20.39	
	12/20/18	BRAKE PADS	GENERAL OPERATING	STREETS & ALLEYS	726.18	
	12/20/18	AXLE FLANGE STUD WEDGE	GENERAL OPERATING	STREETS & ALLEYS	14.52	
	12/20/18	BRAKE CALIPER W/DEPOSIT	GENERAL OPERATING	STREETS & ALLEYS	535.02	
	12/20/18	CONE, SCOTSEAL	GENERAL OPERATING	STREETS & ALLEYS	145.72-	
	12/20/18	CORE DEPOSIT	GENERAL OPERATING	STREETS & ALLEYS	163.76-	
	12/20/18	CONTROL KNOB	GENERAL OPERATING	STREETS & ALLEYS	30.30	
	12/31/18	BLOWER MOTOR	GENERAL OPERATING	STREETS & ALLEYS	48.94	
	12/31/18	GROMMET	GENERAL OPERATING	STREETS & ALLEYS	6.09	
	12/20/18	TERMINAL ASSORTMENT	GENERAL OPERATING	PROPERTIES & MAINTENAN	15.20	
	12/20/18	FUSE	GENERAL OPERATING	PROPERTIES & MAINTENAN	7.52	
	12/20/18	LOCK FLEX	GENERAL OPERATING	PROPERTIES & MAINTENAN	58.49	
	12/20/18	RATCHET	GENERAL OPERATING	PROPERTIES & MAINTENAN	22.94	
	12/20/18	LOCK FLEX	GENERAL OPERATING	PROPERTIES & MAINTENAN	53.54-	
	12/20/18	RATCHET	GENERAL OPERATING	PROPERTIES & MAINTENAN	12.23	
	12/20/18	RATCHET	GENERAL OPERATING	PROPERTIES & MAINTENAN	22.94-	
	12/20/18	TAX	GENERAL OPERATING	PROPERTIES & MAINTENAN	4.95-	
	12/20/18	AIR FILTER	GENERAL OPERATING	PROPERTIES & MAINTENAN	44.87	
	12/20/18	KASPER AUTO PARTS	GENERAL OPERATING	PROPERTIES & MAINTENAN	167.25	
	12/20/18	ARMOR ALL	GENERAL OPERATING	PROPERTIES & MAINTENAN	42.83	
	12/31/18	SUPER GLUE	GENERAL OPERATING	PROPERTIES & MAINTENAN	3.99	
	12/31/18	WIRELEAD	GENERAL OPERATING	PROPERTIES & MAINTENAN	10.08	
	12/20/18	HEAT SHRINK TUBING	GENERAL OPERATING	PROPERTIES & MAINTENAN	21.89	
	12/20/18	BATTERY	GENERAL OPERATING	PROPERTIES & MAINTENAN	145.49	
	12/31/18	SPARK PLUG, COOLING SYSTEM	GENERAL OPERATING	FIRE	108.64	
	12/31/18	FUEL FILTER	GENERAL OPERATING	FIRE	5.06	
	12/31/18	FUEL FILTER	GENERAL OPERATING	FIRE	7.48	
	12/31/18	FUEL FILTERS	GENERAL OPERATING	FIRE	12.54-	
	12/31/18	TEMPERATURE SENSOR, SPARK	GENERAL OPERATING	FIRE	108.64-	
	12/20/18	HEATER CONTROL KNOB	WATER	WATER DISTRIBUTION	16.82	
	12/20/18	LAMP	WATER	WATER DISTRIBUTION	9.10	
	12/31/18	FUEL FILTERS	ELECTRIC	ELECTRIC DISTRIBUTION	3.48-	
	12/20/18	SPINDLE LOCKNUT	ELECTRIC	ELECTRIC DISTRIBUTION	20.39	
	12/20/18	WHEEL SEAL	ELECTRIC	ELECTRIC DISTRIBUTION	10.19	
	12/20/18	MAGNETIC HEATER	ELECTRIC	ELECTRIC DISTRIBUTION	67.31	
	12/20/18	U JOINT	ELECTRIC	ELECTRIC DISTRIBUTION	25.48-	
	12/20/18	CHOKE KIT	ELECTRIC	ELECTRIC DISTRIBUTION	16.45	
	12/20/18	HOSE FITTINGS	ELECTRIC	ELECTRIC DISTRIBUTION	58.58	
	12/20/18	HOSE FITTINGS	ELECTRIC	ELECTRIC DISTRIBUTION	85.78	
	12/20/18	HOSE FITTINGS, HOSE	GOLF COURSE	NON-DEPARTMENTAL	160.54	
			TOTAL:		1,959.51	

VENDOR SORT KEY	DATE	DESCRIPTION	FUND	DEPARTMENT	AMOUNT_
KILLOUGH CONSTRUCTION INC	12/07/18	COLD MIX	STREET IMPROVEMENT	STREET AND ALLEYS	626.85_
				TOTAL:	626.85_
KMEA	12/20/18	EMP ELECTRICITY	ELECTRIC	ELECTRIC PRODUCTION	20,059.45
	12/20/18	EMP ELECTRICITY	ELECTRIC	ELECTRIC PRODUCTION	43,780.71
	12/05/18	GRDA ELECTRICITY	ELECTRIC	ELECTRIC PRODUCTION	75,167.62
	12/31/18	GRDA ELECTRICITY	ELECTRIC	ELECTRIC PRODUCTION	77,733.05
	12/05/18	SPA ELECTRICITY	ELECTRIC	ELECTRIC PRODUCTION	2,690.02
	12/31/18	SPA ELECTRICITY	ELECTRIC	ELECTRIC PRODUCTION	2,185.06
	12/05/18	WAPA ELECTRICITY	ELECTRIC	ELECTRIC PRODUCTION	6,708.81
	12/31/18	WAPA ELECTRICITY	ELECTRIC	ELECTRIC PRODUCTION	7,210.14_
				TOTAL:	235,534.86
LANG CHEVROLET BUICK GMC INC	12/07/18	PROGRAMMED REPLACEMENT RAD	GENERAL OPERATING	CODES ENFORCEMENT	50.35
	12/31/18	RADIO	GENERAL OPERATING	CODES ENFORCEMENT	156.80_
				TOTAL:	207.15
LANGUAGE LINE SERVICES	12/20/18	COURT INTERPRETER	GENERAL OPERATING	MUNICIPAL COURT	23.40_
				TOTAL:	23.40_
LAW ENFORCEMENT SYSTEMS, INC.	12/31/18	ABANDONED VEHICLE LABELS	GENERAL OPERATING	POLICE	82.00_
				TOTAL:	82.00_
LOGAN CONTRACTORS SUPPLY INC	12/31/18	LOCATE FLAGS	WATER	WATER DISTRIBUTION	46.64_
				TOTAL:	46.64
MARTIN PRINGLE OLIVER WALLACE & BAUER	12/20/18	MUNICIPAL MATTERS	GENERAL OPERATING	ADMINISTRATION	2,018.74
	12/20/18	CITY PROSECUTOR	GENERAL OPERATING	MUNICIPAL COURT	2,859.22_
				TOTAL:	4,877.96
MIAMI COUNTY MEDICAL CENTER	12/07/18	MEDICAL CARE FOR PRISONER	GENERAL OPERATING	MUNICIPAL COURT	25.27_
				TOTAL:	25.27_
MIAMI COUNTY TREASURER	12/20/18	REAL ESTATE TAXES	INDUSTRIAL PROMOTI	NON-DEPARTMENTAL	1,709.07_
				TOTAL:	1,709.07_
MIAMI LUMBER INC.	12/20/18	WAFERBOARD, SCREWS	ELECTRIC	ELECTRIC DISTRIBUTION	86.59
	12/20/18	LUMBER	ELECTRIC	ELECTRIC DISTRIBUTION	8.10_
				TOTAL:	94.69
MID-STATES MATERIALS LLC	12/07/18	AB-3, 3/4" SCREENED	WATER	WATER DISTRIBUTION	303.52
	12/07/18	AB-3	WATER	WATER DISTRIBUTION	275.82
	12/07/18	AB-3, 3/4" SCREENED	STREET IMPROVEMENT	STREET AND ALLEYS	303.53
	12/07/18	AB-3	STREET IMPROVEMENT	STREET AND ALLEYS	275.83
	12/31/18	AB-3	STREET IMPROVEMENT	STREET AND ALLEYS	557.39
	12/31/18	AB-3	STREET IMPROVEMENT	STREET AND ALLEYS	378.12_
				TOTAL:	2,094.21
MIDWEST PUMP & MECHANICAL LLC	12/31/18	SEWAGE PUMP & FLOAT	GENERAL OPERATING	PROPERTIES & MAINTENAN	803.33
	12/20/18	REPAIR CHECK VALVE	WATER	WATER TREATMENT	500.00
	12/20/18	REPAIR BELT PRESS CONTROL	SEWER	NON-DEPARTMENTAL	475.00_
				TOTAL:	1,778.33
MISCELLANEOUS DEE SLAYMAN	12/13/18	DEE SLAYMAN:RIGHT OF WAY	CIP - STREET PROJE	STREETS & ALLEYS	1,200.00
LEAVENWORTH LIBRARY	12/20/18	LEAVENWORTH LIBRARY:BOOKS	GENERAL OPERATING	LIBRARY	29.95
PATRICIA KRUEGER	12/31/18	PATRICIA KRUEGER:MILEAGE	GENERAL OPERATING	POLICE	92.65

VENDOR SORT KEY	DATE	DESCRIPTION	FUND	DEPARTMENT	AMOUNT
WILL BUTCHER	12/31/18	WILL BUTCHER:MILEAGE	WATER	WATER TREATMENT	98.10
				TOTAL:	1,420.70
MISSISSIPPI DEPARTMENT OF HUMAN SERVIC	12/07/18	CHILD SUPPORT	GENERAL OPERATING	NON-DEPARTMENTAL	66.76
	12/27/18	CHILD SUPPORT	GENERAL OPERATING	NON-DEPARTMENTAL	66.76
				TOTAL:	133.52
NAV RAT'S OFFICE PRODUCTS INC	12/07/18	COPY PAPER	GENERAL OPERATING	ADMINISTRATION	39.90
	12/20/18	COPY PAPER	GENERAL OPERATING	ADMINISTRATION	79.80
				TOTAL:	119.70
NEKLS	12/20/18	BARCODES	GENERAL OPERATING	LIBRARY	26.00
				TOTAL:	26.00
NICHOLSON DASENBROCK & HARTLEY LC	12/20/18	ATTORNEY FEE	GENERAL OPERATING	MUNICIPAL COURT	75.00
				TOTAL:	75.00
NPG NEWSPAPERS INC	12/07/18	BUDGET HEARING, ORDINANCES	GENERAL OPERATING	ADMINISTRATION	132.08
	12/20/18	WORD FROM THE BIRD	TOURISM	CABIN	250.00
				TOTAL:	382.08
O'REILLY AUTO PARTS	12/07/18	FLOOR MAT	GENERAL OPERATING	CODES ENFORCEMENT	17.99
	12/20/18	HEADLAMP	GENERAL OPERATING	POLICE	55.39
	12/20/18	TOWELS, HANDCLEANER	GENERAL OPERATING	MUNICIPAL COURT	37.47
				TOTAL:	110.85
OIL PATCH PUMP & SUPPLY INC	12/07/18	REDUCER, NIPPLE, ELBOW	WATER	WATER DISTRIBUTION	43.20
	12/07/18	NIPPLE, ELBOW	WATER	WATER DISTRIBUTION	14.26
	12/07/18	GLOVES	WATER	WATER DISTRIBUTION	41.76
				TOTAL:	99.22
OLATHE HEALTH PHYSICIANS INC	12/31/18	PREEMPLOYMENT PHYSICAL	GENERAL OPERATING	POLICE	45.00
				TOTAL:	45.00
OLATHE WINWATER WORKS	12/07/18	PVC CUTTER	WATER	WATER DISTRIBUTION	58.00
	12/07/18	CLAMP	WATER	WATER DISTRIBUTION	232.00
	12/07/18	FINANCE CHARGE	WATER	WATER DISTRIBUTION	5.25
				TOTAL:	295.25
OSAWATOMIE CHAMBER OF COMMERCE	12/20/18	HAM SPONSORSHIP	GENERAL OPERATING	ADMINISTRATION	20.00
	12/20/18	CHAMBER DINNER	GENERAL OPERATING	LIBRARY	65.00
				TOTAL:	85.00
OSAWATOMIE GOLF ASSOCIATION	12/20/18	MEMBERSHIP DUES	GOLF COURSE	NON-DEPARTMENTAL	1,200.00
				TOTAL:	1,200.00
OSAWATOMIE PET CLINIC	12/20/18	EXAMINATION	GENERAL OPERATING	CODES ENFORCEMENT	25.00
	12/20/18	EXAMINATION	GENERAL OPERATING	CODES ENFORCEMENT	105.00
	12/20/18	KETASET, NEEDLES, SYRINGES	GENERAL OPERATING	CODES ENFORCEMENT	98.50
				TOTAL:	228.50
OTTAWA HERALD THE	12/31/18	FREEDOM FESTIVAL	TOURISM	CABIN	215.26
				TOTAL:	215.26
PACE ANALYTICAL SERVICES INC	12/20/18	ANALYTICAL CHARGES	SEWER	NON-DEPARTMENTAL	322.00
	12/31/18	ANALYTICAL CHARGES	SEWER	NON-DEPARTMENTAL	322.00

VENDOR SORT KEY	DATE	DESCRIPTION	FUND	DEPARTMENT	AMOUNT_
				TOTAL:	644.00
PALACE HARDWARE	12/31/18	LED BULB, SENSOR LIGHT	GENERAL OPERATING	ADMINISTRATION	24.97
	12/31/18	SCOUR PADS, SPONGE, BRUSH	GENERAL OPERATING	ADMINISTRATION	33.52
	12/31/18	BANANA TRI TAP	GENERAL OPERATING	ADMINISTRATION	9.99
	12/31/18	COPPER BRASS POLISH	GENERAL OPERATING	ADMINISTRATION	6.47
	12/31/18	GFCI, WALL PLATE	GENERAL OPERATING	ADMINISTRATION	19.58
	12/31/18	SHRINK TUBE, CABLE TIE	GENERAL OPERATING	ADMINISTRATION	10.37
	12/31/18	BRASS HOSE NOZZLE	GENERAL OPERATING	CODES ENFORCEMENT	8.69
	12/31/18	DRAIN SPADE	GENERAL OPERATING	CODES ENFORCEMENT	11.99
	12/31/18	MISC	GENERAL OPERATING	CODES ENFORCEMENT	2.12
	12/31/18	SQUEEGEE	GENERAL OPERATING	POLICE	18.99
	12/31/18	RUBBER SEALS	GENERAL OPERATING	POLICE	1.78
	12/31/18	SPRING SNAP	GENERAL OPERATING	STREETS & ALLEYS	12.70
	12/31/18	PARTS - SALT SPREADER	GENERAL OPERATING	STREETS & ALLEYS	6.80
	12/31/18	KNOCK OUT SEAL, OUTLET	GENERAL OPERATING	PROPERTIES & MAINTENAN	4.71
	12/31/18	ANTIFREEZE	GENERAL OPERATING	PROPERTIES & MAINTENAN	7.18
	12/31/18	WIRE CONNECTOR	GENERAL OPERATING	PROPERTIES & MAINTENAN	2.89
	12/31/18	CONDUIT, ELBOW TEE, TERMIN	GENERAL OPERATING	PROPERTIES & MAINTENAN	24.81
	12/31/18	PROPANE CYLINDER	GENERAL OPERATING	PROPERTIES & MAINTENAN	11.78
	12/31/18	BOLT SNAP	GENERAL OPERATING	PROPERTIES & MAINTENAN	4.56
	12/31/18	BOX COVER, DRAWN BOX	GENERAL OPERATING	PROPERTIES & MAINTENAN	3.58
	12/31/18	CONDUIT	GENERAL OPERATING	PROPERTIES & MAINTENAN	23.45
	12/31/18	ICE MELT	GENERAL OPERATING	PROPERTIES & MAINTENAN	659.05
	12/31/18	TOOL BIN	GENERAL OPERATING	PROPERTIES & MAINTENAN	4.99
	12/31/18	SCRAPER	GENERAL OPERATING	PROPERTIES & MAINTENAN	4.99
	12/31/18	WREATH HANGERS	GENERAL OPERATING	LIBRARY	4.77
	12/31/18	BUSHING, WALL PLATE, GFCI	WATER	WATER TREATMENT	29.73
	12/31/18	ELECTRICAL TAPE	WATER	WATER TREATMENT	8.69
	12/31/18	ADAPTER, CAP, NIPPLE	WATER	WATER TREATMENT	8.27
	12/31/18	PVC CEMENT, PRIMER	WATER	WATER TREATMENT	20.23
	12/31/18	GRAY PAINT	WATER	WATER TREATMENT	23.96
	12/31/18	TIN SNIPS	WATER	WATER TREATMENT	6.49
	12/31/18	DEMOUNT CLIP	WATER	WATER TREATMENT	2.15
	12/31/18	MISC	WATER	WATER DISTRIBUTION	0.66
	12/31/18	ANTIFREEZE	WATER	WATER DISTRIBUTION	7.98
	12/31/18	BRASS CONNECTOR	WATER	WATER DISTRIBUTION	4.59
	12/31/18	FLOODLIGHT	WATER	WATER DISTRIBUTION	6.98
	12/31/18	OUTLET PLATE, BLANK PLATE	ELECTRIC	ELECTRIC PRODUCTION	0.98
	12/31/18	FLUX, TUBE CUTTER	ELECTRIC	ELECTRIC PRODUCTION	18.87
	12/31/18	HEX HEAD	ELECTRIC	ELECTRIC DISTRIBUTION	20.97
	12/31/18	GREEN PAINT	ELECTRIC	ELECTRIC DISTRIBUTION	3.99
	12/31/18	MECH TEST TITN PL	ELECTRIC	ELECTRIC DISTRIBUTION	4.13
	12/31/18	GFCI	SEWER	NON-DEPARTMENTAL	18.99
	12/31/18	BOILER DRAIN	SEWER	NON-DEPARTMENTAL	5.30
				TOTAL:	1,117.69
PAT'S SIGNS	12/20/18	DOOR DECALS	GENERAL OPERATING	ADMINISTRATION	468.00
				TOTAL:	468.00
PITNEY BOWES INC.	12/31/18	POSTAGE METER LEASE	GENERAL OPERATING	ADMINISTRATION	189.50
				TOTAL:	189.50
POMP'S TIRE SERVICE INC	12/07/18	TIRES	GENERAL OPERATING	STREETS & ALLEYS	442.10
				TOTAL:	442.10

VENDOR SORT KEY	DATE	DESCRIPTION	FUND	DEPARTMENT	AMOUNT_
POSTMASTER	12/07/18	PO BOX	ELECTRIC	ELECTRIC ADMINISTRATIO	194.00_
				TOTAL:	194.00_
PROFESSIONAL TURF PRODUCTS LP	12/07/18	IGNITION SWITCH ASSEMBLY	GOLF COURSE	NON-DEPARTMENTAL	81.69_
				TOTAL:	81.69_
PUD LLC	12/31/18	NUCHAIN	GENERAL OPERATING	STREETS & ALLEYS	737.85_
				TOTAL:	737.85_
QUILL CORPORATION	12/07/18	CORRECTION TAPE	GENERAL OPERATING	ADMINISTRATION	16.13
	12/07/18	QUILL CORPORATION	GENERAL OPERATING	ADMINISTRATION	5.19
	12/20/18	ENVELOPES	GENERAL OPERATING	ADMINISTRATION	6.19
	12/31/18	HIGHLIGHTERS, FOLERS, BATT	GENERAL OPERATING	ADMINISTRATION	53.00
	12/31/18	PEPPERMINT PUFFS	GENERAL OPERATING	ADMINISTRATION	18.69
	12/31/18	ENVELOPES, W-2	GENERAL OPERATING	ADMINISTRATION	23.18
	12/31/18	ENVELOPES	GENERAL OPERATING	ADMINISTRATION	15.99
	12/31/18	W-2'S	GENERAL OPERATING	ADMINISTRATION	34.53
	12/31/18	CALENDARS, TAPE, BATTERY	GENERAL OPERATING	ADMINISTRATION	33.57
	12/07/18	PAPER TOWELS	GENERAL OPERATING	POLICE	64.24
	12/20/18	TOWELS	GENERAL OPERATING	POLICE	87.45
	12/31/18	COFFEE	GENERAL OPERATING	POLICE	16.98
	12/31/18	CALENDARS, TAPE, BATTERY	GENERAL OPERATING	POLICE	11.99
	12/31/18	CALENDARS, TAPE, BATTERY	GENERAL OPERATING	POLICE	33.53
	12/31/18	CALENDARS, TAPE, BATTERY	GENERAL OPERATING	PROPERTIES & MAINTENAN	4.79
	12/20/18	TAPE	GENERAL OPERATING	LIBRARY	15.83
	12/31/18	TAPE	GENERAL OPERATING	LIBRARY	29.90
	12/31/18	CALENDARS, TAPE, BATTERY	GENERAL OPERATING	LIBRARY	11.59
	12/31/18	CALENDARS, TAPE, BATTERY	WATER	WATER TREATMENT	4.79
	12/07/18	WARNING SIGNS	SEWER	NON-DEPARTMENTAL	28.10
	12/20/18	CAUTION SIGN	SEWER	NON-DEPARTMENTAL	17.97
	12/31/18	CALENDARS, TAPE, BATTERY	SEWER	NON-DEPARTMENTAL	4.79_
				TOTAL:	538.42
R & J TRUCKING	12/07/18	TRUCKING	WATER	WATER DISTRIBUTION	206.82
	12/07/18	TRUCKING	STREET IMPROVEMENT	STREET AND ALLEYS	206.82
	12/31/18	GRAVEL HAULING	STREET IMPROVEMENT	STREET AND ALLEYS	427.08
	12/31/18	GRAVEL HAULING	STREET IMPROVEMENT	STREET AND ALLEYS	431.52
	12/31/18	GRAVEL HAULING	STREET IMPROVEMENT	STREET AND ALLEYS	292.74_
				TOTAL:	1,564.98
REJIS COMMISSION	12/07/18	LEWEB SUBSCRIPTION	GENERAL OPERATING	POLICE	35.43
	12/31/18	LEWEB SUBSCRIPTION	GENERAL OPERATING	POLICE	35.43_
				TOTAL:	70.86
TRICOH USA, INC.	12/07/18	COPIES	GENERAL OPERATING	ADMINISTRATION	254.66
	12/20/18	COPIES	GENERAL OPERATING	ADMINISTRATION	53.26
	12/31/18	COPIES	GENERAL OPERATING	ADMINISTRATION	159.36
	12/07/18	COPIES	GENERAL OPERATING	POLICE	87.58
	12/31/18	COPIES	GENERAL OPERATING	POLICE	71.96
	12/07/18	COPIES	GENERAL OPERATING	LIBRARY	58.76
	12/31/18	COPIES	GENERAL OPERATING	LIBRARY	55.77_
				TOTAL:	741.35
RURAL WATER DIST. #1	12/07/18	WATER SERVICE	GENERAL OPERATING	CODES ENFORCEMENT	30.55
	12/07/18	WATER SERVICE	GENERAL OPERATING	PROPERTIES & MAINTENAN	33.84
	12/07/18	WATER SERVICE	GOLF COURSE	NON-DEPARTMENTAL	53.11

VENDOR SORT KEY	DATE	DESCRIPTION	FUND	DEPARTMENT	AMOUNT
				TOTAL:	117.50
SCARECROW FARM LAWN CARE	12/07/18	MOWING	GENERAL OPERATING	CODES ENFORCEMENT	630.00
				TOTAL:	630.00
SECURITY 1ST TITLE LLC	12/31/18	SECURITY 1ST TITLE LLC	GENERAL OPERATING	CODES ENFORCEMENT	225.00
	12/31/18	TITLE SEARCH	GENERAL OPERATING	CODES ENFORCEMENT	225.00
	12/31/18	TITLE SEARCH	GENERAL OPERATING	CODES ENFORCEMENT	225.00
	12/31/18	TITLE SEARCH	GENERAL OPERATING	CODES ENFORCEMENT	225.00
	12/31/18	TITLE SEARCH	GENERAL OPERATING	CODES ENFORCEMENT	225.00
	12/31/18	TITLE SEACH	GENERAL OPERATING	CODES ENFORCEMENT	225.00
	12/31/18	TITLE SEARCH	GENERAL OPERATING	CODES ENFORCEMENT	225.00
	12/31/18	TITLE SEARCH	GENERAL OPERATING	CODES ENFORCEMENT	225.00
	12/31/18	TITLE SEARCH	GENERAL OPERATING	CODES ENFORCEMENT	225.00
				TOTAL:	2,025.00
SILBER SPOONS	12/14/18	CHRISTMAS LUNCH	GENERAL OPERATING	ADMINISTRATION	433.75
	12/20/18	CHRISTMAS LUNCH	GENERAL OPERATING	ADMINISTRATION	87.75
				TOTAL:	521.50
SUDDENLINK COMMUNICATIONS	12/20/18	INTERNET	GENERAL OPERATING	ADMINISTRATION	189.95
				TOTAL:	189.95
T2 HOLDINGS LLC PROSHRED SECURITY	12/20/18	SHREDDING	GENERAL OPERATING	ADMINISTRATION	30.00
	12/20/18	SHREDDING	GENERAL OPERATING	POLICE	30.00
				TOTAL:	60.00
DEBBIE TALLEY	12/31/18	MEMORIAL HALL JANITORIAL	GENERAL OPERATING	ADMINISTRATION	375.00
				TOTAL:	375.00
TG TECHNICAL SERVICES	12/20/18	TRANSMITTER-BELT PRESS	SEWER	NON-DEPARTMENTAL	315.00
				TOTAL:	315.00
THOMPSON PUMP	12/31/18	HOSE SUCTION	GENERAL OPERATING	LEVEES & STORMWATER	433.00
	12/31/18	HOSE SUCTION	WATER	WATER DISTRIBUTION	433.00
				TOTAL:	866.00
TYLER TECHNOLOGIES INC	12/20/18	CONFIGURATION	TECHNOLOGY FUND -	ADMINISTRATION	150.00
	12/20/18	CONFIGURATION/CONVERSION	TECHNOLOGY FUND -	ADMINISTRATION	6,250.00
	12/07/18	FINANCIAL SYSTEM SOFTWARE	TECHNOLOGY FUND -	ADMINISTRATION	650.00
	12/20/18	CONFIGURATION	TECHNOLOGY FUND -	ADMINISTRATION	5,888.88
				TOTAL:	12,938.88
ULINE INC	12/31/18	CARPET CHAIR MAT	GENERAL OPERATING	POLICE	180.73
				TOTAL:	180.73
USA BLUE BOOK	12/20/18	CHART PENS, CHLORINE SWIFT	WATER	WATER TREATMENT	589.37
	12/20/18	LATCHING RELAY	ELECTRIC	ELECTRIC PRODUCTION	40.79
				TOTAL:	630.16
USD #367	12/20/18	TRANSPORTATION	LIBRARY	INVALID DEPARTMENT	108.50
	12/20/18	TRANSPORTATION	LIBRARY	INVALID DEPARTMENT	224.50
	12/20/18	TRANSPORTATION	LIBRARY	INVALID DEPARTMENT	122.50
	12/20/18	TRANSPORTATION	LIBRARY	INVALID DEPARTMENT	127.00
				TOTAL:	582.50

VENDOR SORT KEY	DATE	DESCRIPTION	FUND	DEPARTMENT	AMOUNT_	
USD 367 SPORT & FITNESS ZONE	12/07/18	MEMBERSHIP	GENERAL OPERATING	ADMINISTRATION	40.00	
				TOTAL:	40.00	
VAN WALL EQUIPMENT	12/31/18	SENSOR, TEMPERATUR	GOLF COURSE	NON-DEPARTMENTAL	144.67	
				TOTAL:	144.67	
VANTAGEPOINT TRANSFER	12/07/18	ICMA	GENERAL OPERATING	NON-DEPARTMENTAL	709.01	
	12/27/18	ICMA	GENERAL OPERATING	NON-DEPARTMENTAL	727.86	
	12/07/18	ICMA	GENERAL OPERATING	ADMINISTRATION	86.00	
	12/27/18	ICMA	GENERAL OPERATING	ADMINISTRATION	86.00	
	12/07/18	ICMA	GENERAL OPERATING	CODES ENFORCEMENT	12.50	
	12/27/18	ICMA	GENERAL OPERATING	CODES ENFORCEMENT	9.99	
	12/07/18	ICMA	GENERAL OPERATING	POLICE	78.75	
	12/27/18	ICMA	GENERAL OPERATING	POLICE	78.75	
	12/27/18	ICMA	GENERAL OPERATING	FIRE	7.23	
	12/07/18	ICMA	ELECTRIC	NON-DEPARTMENTAL	130.00	
	12/27/18	ICMA	ELECTRIC	NON-DEPARTMENTAL	111.15	
	12/07/18	ICMA	ELECTRIC	ELECTRIC DISTRIBUTION	32.50	
	12/27/18	ICMA	ELECTRIC	ELECTRIC DISTRIBUTION	27.78	
	TOTAL:				2,097.52	
	VERIZON WIRELESS	12/20/18	INTERNET	GENERAL OPERATING	ADMINISTRATION	40.01
12/20/18		INTERNET	GENERAL OPERATING	POLICE	40.01	
TOTAL:					80.02	
VIKING INDUSTRIAL SUPPLY	12/20/18	PAPER PRODUCTS	GENERAL OPERATING	PROPERTIES & MAINTENAN	306.42	
				TOTAL:	306.42	
WAL-MART COMMUNITY BRC	12/07/18	TABLECOTHS, PAINT, BRUSH	GENERAL OPERATING	ADMINISTRATION	11.36	
	12/31/18	SPONGE, COMMAND STRIPS	GENERAL OPERATING	ADMINISTRATION	21.83	
	12/31/18	INTEREST	GENERAL OPERATING	ADMINISTRATION	9.86	
	12/07/18	GLUE	GENERAL OPERATING	LIBRARY	29.75	
	12/07/18	CANDY	GENERAL OPERATING	LIBRARY	24.68	
	12/07/18	CRAFT SUPPLIES	GENERAL OPERATING	LIBRARY	18.04	
	12/07/18	DVDS	GENERAL OPERATING	LIBRARY	175.64	
	12/07/18	CHAMBER DINNER	GENERAL OPERATING	LIBRARY	16.21	
	12/31/18	CANVAS	GENERAL OPERATING	LIBRARY	31.88	
	12/31/18	DVDS	GENERAL OPERATING	LIBRARY	132.64	
	12/31/18	CANDY, COOKIES, FLOUR	GENERAL OPERATING	LIBRARY	30.30	
	12/31/18	12 FT BRANCH	ELECTRIC	ELECTRIC DISTRIBUTION	13.32	
	12/07/18	HAM, PREP PROD	GOLF COURSE	NON-DEPARTMENTAL	33.09	
	12/07/18	HEATER	GOLF COURSE	NON-DEPARTMENTAL	19.88	
	12/07/18	BUNS, COFFEE, WATER, CANDY	GOLF COURSE	NON-DEPARTMENTAL	328.82	
	TOTAL:				897.30	
	WASTE MANAGEMENT	12/20/18	REFUSE	GENERAL OPERATING	POLICE	18.09
		12/20/18	CEMETERY DUMPSTER	GENERAL OPERATING	PROPERTIES & MAINTENAN	105.00
12/20/18		SLUDGE HAUL OFF	SEWER	NON-DEPARTMENTAL	1,747.11	
12/20/18		REFUSE	REFUSE	NON-DEPARTMENTAL	592.48	
TOTAL:				2,462.68		
WATER LOSS SOLUTIONS, LLC	12/20/18	BACKFLOW TESTING	SEWER	NON-DEPARTMENTAL	76.88	
				TOTAL:	76.88	
WEX BANK	12/28/18	FUEL	GENERAL OPERATING	CODES ENFORCEMENT	141.04	
	12/28/18	FUEL	GENERAL OPERATING	POLICE	1,534.38	

VENDOR SORT KEY	DATE	DESCRIPTION	FUND	DEPARTMENT	AMOUNT_
	12/28/18	FUEL	GENERAL OPERATING	STREETS & ALLEYS	739.91
	12/28/18	FUEL	GENERAL OPERATING	PROPERTIES & MAINTENAN	509.32
	12/28/18	FUEL	GENERAL OPERATING	FIRE	207.25
	12/28/18	FUEL	WATER	WATER DISTRIBUTION	100.35
	12/28/18	FUEL	WATER	WATER DISTRIBUTION	226.79
	12/28/18	FUEL	ELECTRIC	ELECTRIC PRODUCTION	61.51
	12/28/18	FUEL	ELECTRIC	ELECTRIC DISTRIBUTION	309.86
	12/28/18	FUEL	SEWER	NON-DEPARTMENTAL	100.35
	12/28/18	FUEL	SEWER	NON-DEPARTMENTAL	31.79
	12/28/18	FUEL	GOLF COURSE	NON-DEPARTMENTAL	50.40
				TOTAL:	4,012.95
WILSON SPORTING GOODS	12/20/18	WILSON STAFF JAR BALL LOGO	GOLF COURSE	NON-DEPARTMENTAL	240.00
				TOTAL:	240.00
WYCOFF'S LOCKSMITHING	12/20/18	UNLOCK TROPHY CASE	GENERAL OPERATING	ADMINISTRATION	95.00
				TOTAL:	95.00
**PAYROLL EXPENSES	12/01/2018 - 12/31/2018		GENERAL OPERATING	ADMINISTRATION	19,104.65
			GENERAL OPERATING	CODES ENFORCEMENT	3,959.90
			GENERAL OPERATING	POLICE	43,470.47
			GENERAL OPERATING	CABIN	1,270.48
			GENERAL OPERATING	STREETS & ALLEYS	5,743.71
			GENERAL OPERATING	PROPERTIES & MAINTENAN	8,093.16
			GENERAL OPERATING	FIRE	3,753.42
			GENERAL OPERATING	MUNICIPAL COURT	2,348.60
			GENERAL OPERATING	LIBRARY	5,508.91
			WATER	WATER ADMINISTRATION	782.11
			WATER	WATER TREATMENT	5,113.82
			WATER	WATER DISTRIBUTION	5,252.24
			ELECTRIC	ELECTRIC ADMINISTRATIO	1,173.10
			ELECTRIC	ELECTRIC PRODUCTION	5,113.49
			ELECTRIC	ELECTRIC DISTRIBUTION	10,865.59
			SEWER	NON-DEPARTMENTAL	6,052.53
			GOLF COURSE	NON-DEPARTMENTAL	5,646.90
				TOTAL:	133,253.08

VENDOR SORT KEY

DATE

DESCRIPTION

FUND

DEPARTMENT

AMOUNT_

===== FUND TOTALS =====

01	GENERAL OPERATING	188,337.63
02	WATER	37,956.53
03	ELECTRIC	288,496.53
04	SEWER	23,690.12
05	REFUSE	592.48
06	LIBRARY	582.50
09	INDUSTRIAL PROMOTION	2,709.07
12	STREET IMPROVEMENTS	3,499.88
13	TOURISM	1,411.68
18	GOLF COURSE	13,320.80
23	CIP - ELECTRIC	3,208.44
25	CIP - STREET PROJECT	1,200.00
27	CIP - GRANTS	3,095.14
31	EMPLOYEE BENEFITS	78,904.43
35	TECHNOLOGY FUND - CIP	14,338.88

 GRAND TOTAL: 661,344.11

SELECTION CRITERIA

SELECTION OPTIONS

VENDOR SET: 01-OSAWATOMIE KS
VENDOR: All
CLASSIFICATION: All
BANK CODE: All
ITEM DATE: 0/00/0000 THRU 99/99/9999
ITEM AMOUNT: 99,999,999.00CR THRU 99,999,999.00
GL POST DATE: 12/01/2018 THRU 12/31/2018
CHECK DATE: 0/00/0000 THRU 99/99/9999

PAYROLL SELECTION

PAYROLL EXPENSES: YES
EXPENSE TYPE: NET
CHECK DATE: 12/01/2018 THRU 12/31/2018

PRINT OPTIONS

PRINT DATE: Check Date
SEQUENCE: By Vendor Sort
DESCRIPTION: Distribution
GL ACCTS: NO
REPORT TITLE: C O U N C I L R E P O R T 12-31-2018
SIGNATURE LINES: 0

PACKET OPTIONS

INCLUDE REFUNDS: YES
INCLUDE OPEN ITEM:NO



Remittance:
 Tyler Technologies, Inc.
 (FEIN 75-2303920)
 P.O. Box 203556
 Dallas, TX 75320-3556

Invoice

Invoice No	Date	Page
025-243880	12/05/2018	1 of 1

Empowering people who serve the public®

Questions:
 Tyler Technologies - Local Government
 Phone: 1-800-772-2260 Press 2, then 2
 Email: ar@tylertech.com



Bill To: City of Osawatomie
 439 Main St.
 Osawatomie, KS 66064

Ship To: City of Osawatomie
 439 Main St.
 Osawatomie, KS 66064

Customer No.	Ord No	PO Number	Currency	Terms	Due Date
44137	95863	2018-50514-4	USD	NET45	01/19/2019

Date	Description	Units	Rate	Extended Price
Nov 26 2018	Steven Hightower OSAWATOMIE, KS 2018-50514-4 - Financial Management Suite Incode Financial Management - Configuration - Cash Collections -R	1	100.00	100.00
Nov 26 2018	Steven Hightower OSAWATOMIE, KS 2018-50514-4 - Financial Management Suite Incode Financial Management - Production assistance - General Ledger Journal Entry Import -R	0.5	100.00	50.00
Nov 26 2018	Steven Hightower OSAWATOMIE, KS 2018-50514-4 - Financial Management Suite Incode Financial Management - Production assistance - General Ledger -R	0.25	100.00	25.00
Nov 27 2018	Steven Hightower OSAWATOMIE, KS 2018-50514-4 - Financial Management Suite Incode Financial Management - Production assistance - General Ledger -R	4.75	100.00	475.00
Nov 28 2018	Steven Hightower OSAWATOMIE, KS 2018-50514-4 - Financial Management Suite Incode Financial Management - Production assistance - General Ledger Journal Entry Import -R	1	100.00	100.00
Nov 28 2018	Steven Hightower OSAWATOMIE, KS 2018-50514-4 - Financial Management Suite Incode Financial Management - Production assistance - General Ledger -R	3.5	100.00	350.00
Nov 29 2018	Steven Hightower OSAWATOMIE, KS 2018-50514-4 - Financial Management Suite Incode Financial Management - Production assistance - Accounts Payable -R	3.75	100.00	375.00
Nov 29 2018	Steven Hightower OSAWATOMIE, KS 2018-50514-4 - Financial Management Suite Incode Financial Management - Production assistance - General Ledger -R	1.75	100.00	175.00
Nov 30 2018	Steven Hightower OSAWATOMIE, KS 2018-50514-4 - Financial Management Suite Incode Financial Management - Production assistance - Accounts Payable -R	7.75	100.00	775.00

****ATTENTION****
 Order your checks and forms from
 Tyler Business Forms at 877-749-2090 or
 tylerbusinessforms.com to guarantee
 100% compliance with your software.

Subtotal	2,425.00
Sales Tax	0.00
Invoice Total	2,425.00



Remittance:
 Tyler Technologies, Inc.
 (FEIN 75-2303920)
 P.O. Box 203556
 Dallas, TX 75320-3556

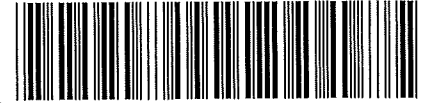
Invoice

Invoice No	Date	Page
025-244336	12/12/2018	1 of 2

Empowering people who serve the public®

Questions:

Tyler Technologies - Local Government
 Phone: 1-800-772-2260 Press 2, then 2
 Email: ar@tylertech.com

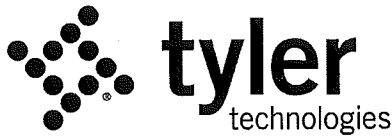


Bill To: CITY OF OSAWATOMIE
 Tammy Seamands
 P.O. BOX 37
 OSAWATOMIE, KS 66064

Ship To: City of Osawatomi
 439 Main St.
 Osawatomi, KS 66064

Customer No.	Ord No	PO Number	Currency	Terms	Due Date
44137	95863	2018-50514-4	USD	NET45	01/26/2019

Date	Description	Units	Rate	Extended Price
Dec 1 2018	Steven Hightower OSAWATOMIE, KS 2018-50514-4 - Financial Management Suite Incode Financial Management - Production assistance - Accounts Payable -R	1	100.00	100.00
Dec 3 2018	Steven Hightower OSAWATOMIE, KS 2018-50514-4 - Financial Management Suite Incode Financial Management - Production assistance - Accounts Payable	5	100.00	500.00
Dec 3 2018	Steven Hightower OSAWATOMIE, KS 2018-50514-4 - Financial Management Suite Incode Personnel Management - Payroll Production assistance	3.5	100.00	350.00
Dec 4 2018	Steven Hightower OSAWATOMIE, KS 2018-50514-4 - Financial Management Suite Incode Financial Management - Production assistance - Accounts Payable	1.25	100.00	125.00
Dec 4 2018	Steven Hightower OSAWATOMIE, KS 2018-50514-4 - Financial Management Suite Incode Financial Management - Production assistance - General Ledger	3.75	100.00	375.00
Dec 4 2018	Steven Hightower OSAWATOMIE, KS 2018-50514-4 - Financial Management Suite Incode Personnel Management - Human Resources Production assistance	0.5	100.00	50.00
Dec 4 2018	Steven Hightower OSAWATOMIE, KS 2018-50514-4 - Financial Management Suite Incode Personnel Management - Payroll Production assistance	2.5	100.00	250.00
Dec 5 2018	Steven Hightower OSAWATOMIE, KS 2018-50514-4 - Financial Management Suite Incode Financial Management - Production assistance - Accounts Payable	3.25	100.00	325.00
Dec 5 2018	Steven Hightower OSAWATOMIE, KS 2018-50514-4 - Financial Management Suite Incode Personnel Management - Payroll Production assistance	4.75	100.00	475.00
Dec 6 2018	Steven Hightower OSAWATOMIE, KS 2018-50514-4 - Financial Management Suite Incode Financial Management - Production assistance - Accounts Payable	1.25	100.00	125.00
Dec 6 2018	Steven Hightower OSAWATOMIE, KS 2018-50514-4 - Financial Management Suite Incode Financial Management - Production assistance - General Ledger	1	100.00	100.00
Dec 6 2018	Steven Hightower OSAWATOMIE, KS 2018-50514-4 - Financial Management Suite Incode Personnel Management - Payroll Production assistance	6.25	100.00	625.00
Dec 6 2018	Steven Hightower OSAWATOMIE, KS 2018-50514-4 - Financial Management Suite Hotel/Lodging	4	96.65	386.58
Dec 6 2018	Steven Hightower OSAWATOMIE, KS 2018-50514-4 - Financial Management Suite Auto Rental - Gas	1	21.35	21.35
Dec 7 2018	Steven Hightower OSAWATOMIE, KS 2018-50514-4 - Financial Management Suite Hotel/Lodging	1	99.55	99.55
Dec 7 2018	Steven Hightower OSAWATOMIE, KS 2018-50514-4 - Financial Management Suite Parking	1	49.50	49.50
Dec 7 2018	Steven Hightower OSAWATOMIE, KS 2018-50514-4 - Financial Management Suite Auto Rental	1	304.65	304.65
Dec 7 2018	Steven Hightower OSAWATOMIE, KS 2018-50514-4 - Financial Management Suite Per Diem US Rates	5	55.00	275.00
Dec 7 2018	Steven Hightower OSAWATOMIE, KS 2018-50514-4 - Financial Management Suite Airfare	1	457.16	457.16
Dec 7 2018	Steven Hightower OSAWATOMIE, KS 2018-50514-4 - Financial Management Suite Mileage	20	0.55	10.90



Remittance:
 Tyler Technologies, Inc.
 (FEIN 75-2303920)
 P.O. Box 203556
 Dallas, TX 75320-3556

Invoice

Invoice No	Date	Page
025-244336	12/12/2018	2 of 2

Empowering people who serve the public®

Questions:
 Tyler Technologies - Local Government
 Phone: 1-800-772-2260 Press 2, then 2
 Email: ar@tylertech.com

Bill To: CITY OF OSAWATOMIE
 Tammy Seamands
 P.O. BOX 37
 OSAWATOMIE, KS 66064

Ship To: City of Osawatomie
 439 Main St.
 Osawatomie, KS 66064

Customer No.	Ord No	PO Number	Currency	Terms	Due Date
44137		2018-50514-4	USD	NET45	01/26/2019

Date	Description	Units	Rate	Extended Price
------	-------------	-------	------	----------------

****ATTENTION****
 Order your checks and forms from
 Tyler Business Forms at 877-749-2090 or
 tylerbusinessforms.com to guarantee
 100% compliance with your software.

Subtotal	5,004.69
Sales Tax	0.00
Invoice Total	5,004.69



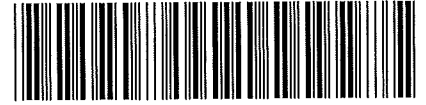
Remittance:
 Tyler Technologies, Inc.
 (FEIN 75-2303920)
 P.O. Box 203556
 Dallas, TX 75320-3556

Invoice

Invoice No	Date	Page
025-246047	12/26/2018	1 of 1

Empowering people who serve the public®

Questions:
 Tyler Technologies - Local Government
 Phone: 1-800-772-2260 Press 2, then 2
 Email: ar@tylertech.com



Bill To: CITY OF OSAWATOMIE
 Tammy Seamands
 P.O. BOX 37
 OSAWATOMIE, KS 66064

Ship To: City of Osawatomie
 439 Main St.
 Osawatomie, KS 66064

Customer No.	Ord No	PO Number	Currency	Terms	Due Date
44137	95863	2018-50514-4	USD	NET45	02/09/2019

Date	Description	Units	Rate	Extended Price
Dec 11 2018	Joseph Badger OSAWATOMIE, KS 2018-50514-4 - Financial Management Suite Production assistance - Tyler Content Manager -R	0.5	100.00	50.00

****ATTENTION****

Order your checks and forms from
 Tyler Business Forms at 877-749-2090 or
 tylerbusinessforms.com to guarantee
 100% compliance with your software.

Subtotal **50.00**

Sales Tax **0.00**

Invoice Total **50.00**



Invoice

November 27, 2018

Project No: R141554.03

Invoice No: 106599

Invoice Amount: 1,650.00

City of Osawatomie
439 Main Street
PO Box 37
Osawatomie, KS 66064

Project Manager Matt Kalin

Project R141554.03 Osawatomie 12 MW Generation Capacity Improvements

Professional Services through November 16, 2018

	Contract Amount	Percent Complete	Billed-to-Date	Previous Billing	Current Billing
Lump Sum Phase(s)					
Preliminary Design	\$138,250.00	100 %	\$138,250.00	\$138,250.00	0.00
Final Design	\$47,040.00	100 %	\$47,040.00	\$47,040.00	0.00
Bidding & Negotiation	\$16,100.00	100 %	\$16,100.00	\$16,100.00	0.00
Construction Services	\$65,340.00	100 %	\$65,340.00	\$65,340.00	0.00
Post Construction	\$6,400.00	89 %	\$5,700.00	\$4,050.00	\$1,650.00
Hourly to a Maximum Phase(s)					
Add'l Construction Services	\$23,190.00		\$23,180.50	\$23,180.50	0.00
Add'l RPR Services	\$4,810.00		\$3,947.50	\$3,947.50	0.00
RPR Services	\$43,680.00		\$43,680.00	\$43,680.00	0.00
Total	\$344,810.00		\$343,238.00	\$341,588.00	\$1,650.00
Total Amount Due Upon Receipt					\$1,650.00



Invoice

December 21, 2018

Project No: R141554.03

Invoice No: 107176

Invoice Amount: 187.50

City of Osawatomie
439 Main Street
PO Box 37
Osawatomie, KS 66064

Project Manager Matt Kalin

Project R141554.03 Osawatomie 12 MW Generation Capacity Improvements

Professional Services through December 14, 2018

	Contract Amount	Percent Complete	Billed-to-Date	Previous Billing	Current Billing
Lump Sum Phase(s)					
Preliminary Design	\$138,250.00	100 %	\$138,250.00	\$138,250.00	0.00
Final Design	\$47,040.00	100 %	\$47,040.00	\$47,040.00	0.00
Bidding & Negotiation	\$16,100.00	100 %	\$16,100.00	\$16,100.00	0.00
Construction Services	\$65,340.00	100 %	\$65,340.00	\$65,340.00	0.00
Post Construction	\$6,400.00	92 %	\$5,887.50	\$5,700.00	\$187.50
Hourly to a Maximum Phase(s)					
Add'l Construction Services	\$23,190.00		\$23,180.50	\$23,180.50	0.00
Add'l RPR Services	\$4,810.00		\$3,947.50	\$3,947.50	0.00
RPR Services	\$43,680.00		\$43,680.00	\$43,680.00	0.00
Total	\$344,810.00		\$343,425.50	\$343,238.00	\$187.50
Total Amount Due Upon Receipt					\$187.50

Outstanding Invoices

Number	Date	Balance
106599	11/27/2018	1,650.00
Total		1,650.00



CERTIFICATE – DIRECTOR-1

KANSAS MUNICIPAL ENERGY AGENCY BOARD OF DIRECTORS

This certificate duly documents the appointment of a **Director-1** to serve on the Board of Directors of the Kansas Municipal Energy Agency (KMEA) as provided for in Article V, Section 5.1 of KMEA's Bylaws.

I, the undersigned City Clerk of the City of _____, Kansas, a member of KMEA, do hereby certify that at a meeting of the City Governing Body duly held on the ____ day of _____, _____;

Name: _____	Title: _____	
Address: _____		
City: _____	State: _____	Zip Code: _____
Office Phone: _____	Cell Phone: _____	Fax: _____
Email Address: _____		

who resides within the territory served by the City's electric utility, was appointed to serve on the KMEA Board of Directors for a two-year term beginning May 1, _____.

I further certify that the foregoing appointment is reflected in the official Minutes of the Governing Body of the City for the meeting on the date indicated above.

This certificate is given this _____ day of _____, _____.

City Clerk

_____, Kansas

The Marais des Cygnes River Water Assurance District No. 2
Osage, Franklin, Miami and Linn Counties, Kansas
P.O. Box 60, Ottawa, Kansas 66067

December 20, 2018

City Clerk
City of Osawatomie
P.O. Box 37
439 Main Street
Osawatomie, Kansas 66064

RE: Replacement for Stewart Kasper

It has come to our attention that Stewart Kasper is no longer employed by the City of Osawatomie. Stewart represented your City on the Board of Directors of the MRWAD No. 2 (Marais des Cygnes River Water Assurance District). It is important you name someone to fill Stewart's remaining term on the board.

Please provide us with a letter indicating Stewart has left the City, naming his replacement and their contact information.

Sincerely;



David Buehler
Secretary / Treasurer
MRWAD No. 2

CITY OF OSAWATOMIE



STAFF AGENDA MEMORANDUM

DATE OF MEETING: 1/10/2019

AGENDA ITEM: **New Vehicle Purchase**

PRESENTER: David Ellis, Chief of Police

ISSUE SUMMARY: The City is on a currently schedule to purchase a new patrol vehicle very two years. Currently Chrysler products are available for the beginning of 2019, and a Ford product will be available after med July, depending upon when ordered.

1. Available immediately is a 2019 V8 Police Pursuit Dodge Durango on the lot in Wichita. **(\$31,152)**
2. Available is a 2019 V8 Police Pursuit Dodge Charger, outfitted, all-wheel drive in Andover **(\$29,500)**
3. Available is a 2019 V8 Dodge Pickup, 4x4, outfitted, in Andover **(\$37,750)**
4. Can Order a V6 Dodge Pursuit Rated Durango, would be here in Mid-March. **(\$28,514)**
5. Can Order a 2020 Pursuit rated Ford Explorer and would be available in early Sept. **(\$32,206)**

COUNCIL ACTION NEEDED: Review and discuss.

STAFF RECOMMENDATION TO COUNCIL: Recommend to proceed with the Pursuit Rated Dodge Durango already available in Wichita.

SUPERIOR

AVAILABLE FOR IMMEDIATE DELIVERY!



Emergency Response Vehicles



2018 Dodge Charger Pursuit AWD

5.7 Litre V8 HEMI

Rear Back-up Camera

220 Amp Alternator

Performance Tires

Keyless Entry

HD Cloth Front Seats w/Vinyl Rear Seat

Uconnect 4 with 7-inch Display

Front Dome Lamp

LED Spot Light

EMERGENCY EQUIPMENT PACKAGE INCLUDES:

Whelen 48" Liberty II DUO WeCan Lightbar

Jotto Center Console

Go Rhino Push Bumper

Whelen T-Series LED Lights on Push Bumper

Whelen 200 Watt Siren/Lighting Controller

Whelen 100 Watt Siren Speakers (2)



SALE PRICE \$28,450.00

CALL OR EMAIL FOR DETAILS

andy@servllc.com 316-390-7180

IF YOU ARE INTERESTED IN ADDITIONAL ACCESSORIES SUCH AS A PRISONER TRANSPORT SYSTEM, RADAR, OR CAMERA SYSTEM, PLEASE CONTACT US FOR A COMPETITIVE QUOTE!

SUPERIOR EMERGENCY RESPONSE VEHICLES, LLC

P.O. BOX 965

ANDOVER, KANSAS 67002

316-733-2223

WWW.SERVLLC.COM

Vehicle is offered for purchase in partnership with Parks Motors, a licensed Dodge dealer.

NEW VEHICLES AVAILABLE FOR IMMEDIATE DELIVERY!

SUPERIOR



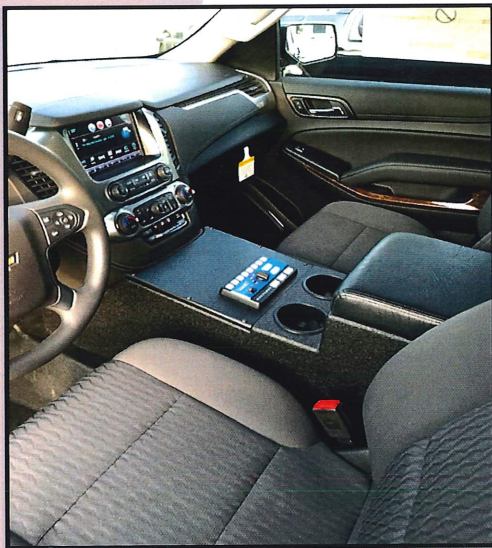
Emergency Response Vehicles

SERV is your trusted and reliable source for professional emergency vehicle upfitting, sales, and service!

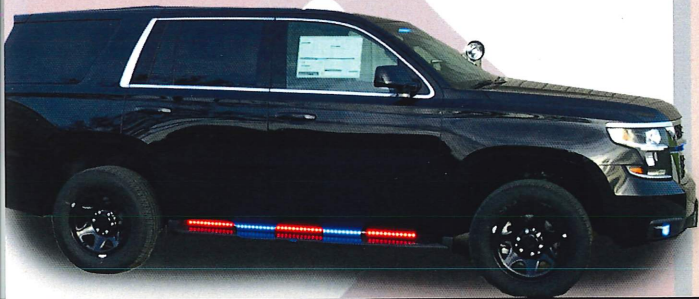
Are you in need of an additional vehicle in your fleet, but don't have time to wait? Check out these NEW "ready to go" vehicles! These units are already outfitted with emergency warning equipment and are pre-wired for your 2-way radio and additional accessories.

Additional equipment, accessories, and vehicle graphics are available upon request.

**NEW 2018 CHEVROLET TAHOE
PPV 4WD**



2018 Chevrolet Tahoe Pursuit Police Vehicle
4WD 5.3L V-8
Exterior Color: Black
"Slick-top" Configuration
LED Spot Light
Premium Whelen Warning Light Package
Whelen Cencom Carbide Siren/Lighting
Controller
Headlight/Taillight Flasher
Custom SERV console w/Armrest and
Cupholders



This vehicle offered for sale in partnership with Don Hattan Chevrolet

SALE PRICE \$43,850

SUPERIOR EMERGENCY RESPONSE VEHICLES, LLC

P.O. BOX 965
ANDOVER, KANSAS 67002
316-733-2223
WWW.SERVLLC.COM

**SEE BACK FOR
ADDITIONAL VEHICLES!**



NEW VEHICLES AVAILABLE FOR IMMEDIATE DELIVERY!

NEW 2018 DODGE RAM 1500 SSV CREW CAB 4x4



- 5.7L HEMI V8
- Chrome Appearance Group
- Anti-Spin Rear Differential
- U-Connect 3 w/5" Display
- RamBox Cargo Management System
- Trailer Brake Controller
- Whelen Legacy Lightbar
- Whelen Perimeter LED Lights
- Whelen Siren/Lighting Controller
- Grille Guard
- Custom SERV Center Console w/Armrest and Cupholders

This vehicle offered for sale in partnership with Davis-Moore CDJRF

SALE PRICE \$37,750

NEW 2018 FORD F-150 POLICE RESPONDER 4WD

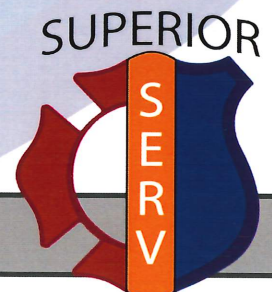


- Super Crew FX4
- Exterior Color: Shadow Black
- 3.5L V6 Ecoboost
- Running Boards
- LED Side Mirror Spot Lights
- Whelen Legacy DUO Lightbar
- Whelen Perimeter LED Lights
- Whelen Siren/Lighting Controller
- Thunderstruck Push Bumper/Grille Guard
- Jotto Center Console w/Armrest and Cupholders

This vehicle offered for sale in partnership with Rusty Eck Ford

SALE PRICE \$41,150

316-733-2223 WWW.SERVLLC.COM



Emergency Response Vehicles

ELLIS

Holton, Kansas *Boys*

430 South Arizona Avenue, Holton, Kansas 66436 Ph: (785) 362-JEEP (5337) Fax: (785) 362-2221

12/19/2018

City of Osawatomie Police Dept.

Attn: David Ellis

Thank you for the opportunity to bid on the future Law Enforcement Vehicle for Osawatomie Police Dept.

Attached is a list of the standard features and then a build sheet with the desired features. The 2019 Dodge Pursuit rated Durango AWD, with 4 keys as well as many other features listed.

Sale price includes 6" 100W Halogen spot lamp installed \$503*

Please note that the Spot lamp would be in addition to the bid price of \$28,514.00

*Price includes vehicle delivery to Osawatomie, Ks.

Please don't hesitate to contact me with any questions.

Sincerely,



David Ellis

Ellis Boys

785-362-5337

dlellis64@gmail.com



ELLIS BOYS CHRYSLER DODGE JEEP RAM
 430 S ARIZONA AVE
 HOLTON, KS 664361240

Configuration Preview

Date Printed: 2018-12-19 6:48 PM **VIN:** **Quantity:** 1
Estimated Ship Date: **VON:** **Status:** BA - Pending order
FAN 1: 00XTX CITY OF OSAWATOMIE, KANSAS
FAN 2:
Client Code:
Bid Number: TB9065
PO Number:

Sold to: **Ship to:**
 ELLIS BOYS CHRYSLER DODGE JEEP RAM (45740) ELLIS BOYS CHRYSLER DODGE JEEP RAM (45740)
 430 S ARIZONA AVE 430 S ARIZONA AVE
 HOLTON, KS 664361240 HOLTON, KS 664361240

Vehicle: **2019 (WDEE75)**

	Sales Code	Description	MSRP(USD)
Model:	WDEE75		34,370
Package:	2BZ		0
	ERC	3.6L V6 24V VVT Engine Upg I w/ESS	0
	DFT	8-Spd Auto 850RE Trans (Make)	0
Paint/Seat/Trim:	PW7	White Knuckle Clear Coat	0
	APA	Monotone Paint	0
	*H7	Cloth Low-Back Bucket Seats	0
	-X9	Black	0
Options:	4DH	Prepaid Holdback	0
	4ES	Delivery Allowance Credit	0
	MAF	Fleet Purchase Incentive	0
	ADL	Skid Plate Group	295
	5N6	Easy Order	0
	4FM	Fleet Option Editor	0
	4FT	Fleet Sales Order	0
	174	Zone 74-Denver	0
	4EA	Sold Vehicle	0
Non Equipment:	4FA	Special Bid-Ineligible For Incentive	0
Bid Number:	TB9065	Government Incentives	0
Discounts:	YG1	7.5 Additional Gallons of Gas	0
Destination Fees:			1,395
Total Price:			<u>36,060 .</u>

Order Type: Fleet **PSP Month/Week:**
Scheduling Priority: 1-Sold Order **Build Priority:** 99
Salesperson:
Customer Name:
Customer Address: USA
Instructions:

Note: This is not an invoice. The prices and equipment shown on this priced order confirmation are tentative and subject to change or correction without prior notice. No claims against the content listed or prices quoted will be accepted. Refer to the vehicle invoice for final vehicle content and pricing. Orders are accepted only when the vehicle is shipped by the factory.

Package Details - 2BZ	
Package Contents	MSRP (USD)
3.6L V6 24V VVT Engine Upg I w/ESS	0
8-Spd Auto 850RE Trans (Make)	0
Durango Pursuit Vehicle	0
Package Value Price	0
NET PACKAGE PRICE	0

Standard Features - WDEE75-DURANGO PURSUIT AWD

Code	Description
C1A	#1 Seat Foam Cushion
JJ3	118 MPH Maximum Speed Calibration
JKP	12V Auxiliary Power Outlet
JCF	140 MPH Primary Cert. Speedometer
WP1	18X8.0 Painted Aluminum Wheels
DJC	195MM Front Axle
DRH	195MM Rear Axle
XCH	2 Additional Key Fobs
BAJ	220 Amp Alternator
NF4	24.6 Gallon Fuel Tank
CFN	2nd Row 60/40 Folding Seat
DLK	3.45 Rear Axle Ratio
ERC	3.6L V6 24V VVT Engine Upg I w/ESS
BR8	4-Wheel Disc Heavy Duty Brakes
CYD	5 Passenger Seating
NAS	50 State Emissions
RCG	6 Speakers
BCZ	650 Amp Maintenance Free AGM Battery
RFJ	7.0" Touch Screen Display
DFT	8-Spd Auto 850RE Trans (Make)
RD3	Accent Color Shark Fin Antenna
MRD	Accent Color Wheel Lip Molding
GAK	Acoustic Windshield
CBD	Active Head Restraints
CG3	Advanced Multistage Front Air Bags
JMA	Air Filtering
RFP	Apple CarPlay
HAH	ATC w/3 Zone Temp Control
LMG	Automatic Headlamps
BC1	Aux Battery
JJM	Auxiliary 12-Volt Rear Power Outlet
MWT	AWD Badge
CTL	Base Door Trim Panel
MMG	Beit Moldings
MNK	Body Color Door Handles
LEP	Body Color Exterior Mirrors
MBL	Body Color SRT Front Fascia
MBT	Body Color/Accent Color Rear Fascia
XJM	Capless Fuel Fill w/o Discriminator
CKN	Cargo Compartment Carpet
CKT	Cargo Tie Down Loops
CGU	Child Seat Anchor System-LATCH Ready
MFP	Chrome Headlamp Bezels

Standard Features - WIDE75-DURANGO PURSUIT AWD

Code	Description
*H7	Cloth Low-Back Bucket Seats
DS7	Conventional Differential Frt Axle
DS8	Conventional Differential Rear Axle
CLG	Covered Cargo Storage
GEG	Deep Tint Sunscreen Glass
CF9	Delete 3rd Row Seat
X82	Door Parts Module
CBR	Door Trim Panel w/Ambient Lighting
CGY	Dvr Inflatable Knee-Bolster Air Bag
JB	Dual Note Electric Horns
MZJ	Durango Bright Badge
SBL	Electric Power Steering
BNB	Electronic Stability Control
NHA	Engine Oil Cooler
LSE	Enhanced Accident Response System
NHJ	Exterior Mirrors w/Heating Element
CKD	Floor Carpet
BNR	Four Wheel Traction Control
LBR	Front & Rear Interior LED Lamps
GCB	Front Door Tinted Glass
X83	Front End Parts Module
X8W	Front Fascias Parts Module
MDA	Front License Plate Bracket
LAX	Front Passenger Seat Belt Alert
X89	Front Suspension Damper Parts Module
X84	Front Suspension Parts Module
CDW	Frt Pass Forward Fold Flat Seat
CUF	Full Length Floor Console
TBB	Full Size Spare Tire
LBC	Glove Box Lamp
RF5	Google Android Auto
JLP	GPS Antenna Input
Z6K	GVW Rating - 6500#
LMB	Halogen Headlamps
X8Y	Headliner Parts Module
NMC	Heavy Duty Engine Cooling
BNG	Hill Start Assist
HGA	Hood Insulation
CWP	Illuminated Cupholders
LAC	Illuminated Entry
JB5	Instr. Panel Platinum Chrome Bezel
X81	Instrument Panel Parts Module
RTF	Integrated Center Stack Radio

Standard Features - WDEE75-DURANGO PURSUIT AWD

Code	Description
XR8	Integrated Voice Command w/Bluetooth
CSV	Interior Assist Handles
XS4	K Black Interior Accents
GX4	Keyless Go
GAP	Laminated Front Door Glass
LA3	LED Taillamps w/Red Accents
CXG	Lock On Sync Tire Press Sensor
CLX	Luxury Front & Rear Floor Mats
RS6	Media Hub (2 USB, Aux)
TZH	Michelin Brand Tires
APA	Monotone Paint
XA8	Non Adjustable Pedals
SDA	Normal Duty Suspension
CUN	Overhead Console
TP5	P265/60R18 BSW On/Off Road Tires
XH3	ParkSense Rt Park Assist w/Stop
XAC	ParkView Rear Back-up Camera
CSR	Passenger Assist Handles
SCJ	Perforated Leather Wrapped Strg Whl
MFN	Performance Grille w/ Black Texture
JPU	Power 4-Way Driver Lumbar Adjust
JPR	Power 8-Way Dvr/Manual Pass Seat
JKY	Power Accessory Delay
GTS	Power Heated Mirrors, Fold-Away
XJA	Power Locking Fuel Filler Door
JPB	Power Locks
JAJ	Premium Instrument Cluster w/Tach
HGP	Premium Insulation Group
LTE	Premium LED Fog Lamps
XPF	Protective Coating and Remover
JP3	Pwr Front Windows, 1-Touch, Up & Down
XFC	R1234YF A/C Refrigerant
BHC	Rain Brake Support
BHD	Ready Alert Braking
HBB	Rear Air Conditioning w/Heater
X8U	Rear Fascias Parts Module
SES	Rear Load Leveling Suspension
X91	Rear Suspension Damper Parts Module
X85	Rear Suspension Parts Module
GNK	Rear View Auto Dim Mirror
GFA	Rear Window Defroster
JHB	Rear Window Wiper/Washer
GXM	Remote Keyless Entry

Standard Features - WDEE75-DURANGO PURSUIT AWD

Code	Description
GXD	Remote Proximity Keyless Entry
X8Z	Seat Parts Module
XX7	Selectable Steering Modes
GXX	Sentry Key Theft Deterrent System
MRF	Sill Molding
JER	Silver Metal Brush Instr Panel Bezel
DHY	Single Speed Transfer Case
AHV	Special Service Group
NHM	Speed Control
XG8	Sport Mode
SDE	Sport Suspension
LNQ	Spot Lamp Wiring Prep.
VLB	Steel Spare Wheel
RDZ	Steering Wheel Mounted Audio Ctrls
XHZ	Stop-Start Dual Battery System
GNV	Sun Visors w/Vanity Mirror
CJ5	Supp. Side Curtain All Rows Air Bags
CJ1	Supplemental Ft Seat Side Air Bags
CGS	Supplemental Side Air Bags
JFJ	Temperature & Compass Gauge
SUD	Tilt/Telescope Steering Column
GBB	Tinted Windshield Glass
XBN	Tip Start
X88	Tire & Wheel Parts Module
XGM	Tire Pressure Monitoring Display
BNT	Trailer Sway Damping
NHQ	Transmission Heater
UAG	Uconnect 4 with 7" Display
RF7	USB Host Flip
JHA	Var Intermittent Windshield Wipers
LAZ	Vehicle Information Center

This Vehicle is already on order and has a VIN #.

DAVIS-MOORE AUTOMOTIVE INC
7675 E. Kellogg
WICHITA, KS 672071613

Priced Order Confirmation (POC)

Date Printed: 2018-11-29 4:47 PM VIN: 1C4SDJFT1KC645519 Quantity: 01
Estimated Ship Date: VON: 42965617 Status: D - Firm schedule:serial number is assigned
Date Ordered: 2018-11-16 3:08 PM Ordered By: S09087B FAN 1: 00DDK Dealer / Police Inventory
FAN 2:
Client Code:
Bid Number: TB9152
PO Number:

Sold to: DAVIS-MOORE AUTOMOTIVE INC (24294)
7675 E. Kellogg
WICHITA, KS 672071613
Ship to: DAVIS-MOORE AUTOMOTIVE INC (24294)
7675 E. Kellogg
WICHITA, KS 672071613

Vehicle: 2019 (WDEE75)

	Sales Code	Description	MSRP(USD)
Model:	WDEE75		34,370
Package:	22Z	Customer Preferred Package 22Z	0
	EZH	5.7L V8 HEMI MDS VVT Engine	2,995
	DFD	8-Spd Auto 8HP70 Trans (Buy)	0
Paint/Seat/Trim:	PW7	White Knuckle Clear Coat	0
	APA	Monotone Paint	0
	*H7	Cloth Low-Back Bucket Seats	0
	-X9	Black	0
Options:	ADL	Skid Plate Group	295
	NAS	50 State Emissions	0
	3AH	Price Protection - Code H	0
	4FM	Fleet Option Editor	0
	4ES	Delivery Allowance Credit	0
	2SQ	FCA Fleet Powertrain Care	0
	YG1	7.5 Additional Gallons of Gas	0
	4FT		0
	5N6	Easy Order	0
	4FT	Fleet Sales Order	0
	4EA	Sold Vehicle	0
Non Equipment:	4KA	Special Bid Handling	0
	4FA	Special Bid-Ineligible For Incentive	0
	4DH	Prepaid Holdback	0
	MAF	Fleet Purchase Incentive	0
Bid Number:	TB9152	Government Incentives	0
Destination Fees:			1,395

Total Price: 39,055

Order Type: Fleet
Scheduling Priority: 1-Sold Order
Salesperson:
Customer Name:
Customer Address:

PSP Month/Week:
Build Priority:

01 \$31,152.68
Drew S...

Instructions:

Note: This is not an invoice. The prices and equipment shown on this priced order confirmation are tentative and subject to change or correction without prior notice. No claims against the content listed or prices quoted will be accepted. Refer to the vehicle invoice for final vehicle content and pricing. Orders are accepted only when the vehicle is shipped by the factory.

DAVIS-MOORE AUTOMOTIVE INC
 7675 E. Kellogg
 WICHITA, KS 672071613

Configuration Preview

Date Printed: 2018-11-29 4:58 PM
 Estimated Ship Date:

VIN:
 VON:

Quantity: 1
 Status: BA - Pending order
 FAN 1: 48775 STATE OF KANSAS
 FAN 2:
 Client Code:
 Bid Number: TB9152
 PO Number:

Sold to:
 DAVIS-MOORE AUTOMOTIVE INC (24294)
 7675 E. Kellogg
 WICHITA, KS 672071613

Ship to:
 DAVIS-MOORE AUTOMOTIVE INC (24294)
 7675 E. Kellogg
 WICHITA, KS 672071613

Vehicle: 2019 (WDEE75)

	Sales Code	Description	MSRP(USD)
Model:	WDEE75		34,370
Package:	2BZ		0
	ERC	3.6L V6 24V VVT Engine Upg I w/ESS	0
	DFT	8-Spd Auto 850RE Trans (Make)	0
Paint/Seat/Trim:	PW7	White Knuckle Clear Coat	0
	APA	Monotone Paint	0
	*H7	Cloth Low-Back Bucket Seats	0
	-X9	Black	0
Options:	4DH	Prepaid Holdback	0
	4ES	Delivery Allowance Credit	0
	MAF	Fleet Purchase Incentive	0
	ADL	Skid Plate Group	295
	5N6	Easy Order	0
	4FM	Fleet Option Editor	0
	4FT	Fleet Sales Order	0
	174	Zone 74-Denver	0
	4EA	Sold Vehicle	0
Non Equipment:	4FA	Special Bid-Ineligible For Incentive	0
Bid Number:	TB9152	Government Incentives	0
Discounts:	YG1	7.5 Additional Gallons of Gas	0
Destination Fees:			1,395

Total Price: 36,060

Order Type: Fleet
 Scheduling Priority: 1-Sold Order
 Salesperson:
 Customer Name:
 Customer Address: USA

PSP Month/Week:
 Build Priority: 99

Handwritten:
 \$ 28,563.80
 [Signature]

Instructions:

Note: This is not an invoice. The prices and equipment shown on this priced order confirmation are tentative and subject to change or correction without prior notice. No claims against the content listed or prices quoted will be accepted. Refer to the vehicle invoice for final vehicle content and pricing. Orders are accepted only when the vehicle is shipped by the factory.

3. Costing Sheet

**BID FORM
 DURANGO PURSUIT**

ESTIMATED QUANTITY	ITEM	SHOW MFG. CODE OFFERED:	UNIT PRICE	ESTIMATED TOTAL
10	WDEE75 All-wheel Drive Base Vehicle with Standard Equipment and V-8 Engine	WDEE75	\$30,889.68	\$308,896.80
10	Equipment Bracket: Police equipment mounting bracket.	Not Available	Not Available	Not Available
10	Floor Mats Black Rubber: MOPAR vehicle specific heavy-duty black rubber mats for front driver & passenger.	MOPAR	\$115.00	\$1,150.00
10	License Plate Bracket: Front.	MDA	STD	STD
10	Mud Guards: OEM, black, heavy duty installed on all four wheels wells.	DLR	\$130.00	\$1,300.00
10	Remote Starter: Chrysler remote starter.	DLR	\$390.00	\$3,900.00
10	LED Spotlight: Factory installed black driver's side.	DLR	\$465.00	\$4,650.00
No estimated quantity	6cyl Pentastar Engine 3.6L 24V	2BZ - ERC AWD	\$28,300.80	

OPTIONAL EQUIPMENT:

ITEM	MFG. CODE	EXCEPTIONS TO SPECIFICATIONS
Equipment Bracket: Police equipment mounting bracket.		Not available
Engine: 5.7L VVT Hemi V-8.	22Z / EZH	AWD \$2,666.00
Blindspot cross path detection	XAN	\$352.00
Single disc remote CD player	RH1	\$441.00
Trailer tow group	AHX	\$752.00
Skid plate group	ADL	\$263.00
Sirius XM radio	RSD	\$174.00
Keys: Three (3) ignition keys per vehicle.	DLR	4 STD

Ship to Location	Price Per Mile Per Vehicle	Number of miles from shipping point to Ship to Location	Delivery Charge Per Vehicle	Estimated Total Delivery Charge
Topeka, KS	\$ 0.90	x 134	= \$ 120.60 x 10 Vehicles	\$ 1,206.00

ESTIMATED CONTRACT TOTAL INCLUDING DELIVERY \$ 321,102.80

Show location of shipping point from which mileage will be calculated: Wichita, KS

Show discount(s) if payment is made in less than 30 days: None

Is pricing available to State of Kansas Political Sub-Division? Yes

Show pricing for extended warranty options: 5-year, 100,000 wrap \$0 deductible \$3,980.00

Show basis for pricing of factory options not specified in this request: Invoice less 0 %

Are you licensed by the Kansas Department of Revenue to sell vehicles in the State of Kansas? Yes

ACCELERATION 0-60 MPH DURANGO 7.1 SECONDS

QUICKER THAN:

- Chevy Tahoe 2WD and 4WD
- Ford Police Interceptor Sedan AWD and FWD
- Ford Explorer Interceptor SUV 3.7L AWD
- Ford Explorer Interceptor Hybrid
- Ford Explorer Interceptor EcoBoost 2.0L

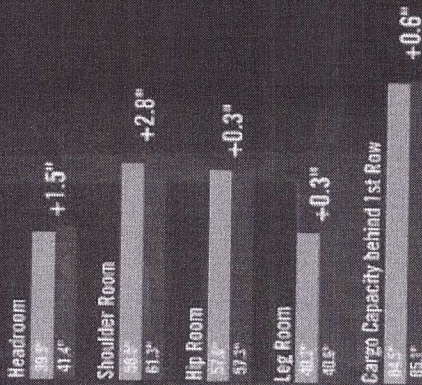
STOPPING DISTANCE FROM 60-0 MPH DURANGO 133.94'

SHORTER IS BETTER:

- 13.95' shorter than Chevy Tahoe 4WD
- 12.30' shorter than Chevy Tahoe 2WD
- 9.01' shorter than Ford F-150 Responder
- 7.97' shorter than Ford sedan EcoBoost
- 2.23' shorter than Ford Utility EcoBoost
- 2.23' shorter than Ford Hybrid Responder

COMFORT AND CAPACITY IN CRUCIAL TIMES

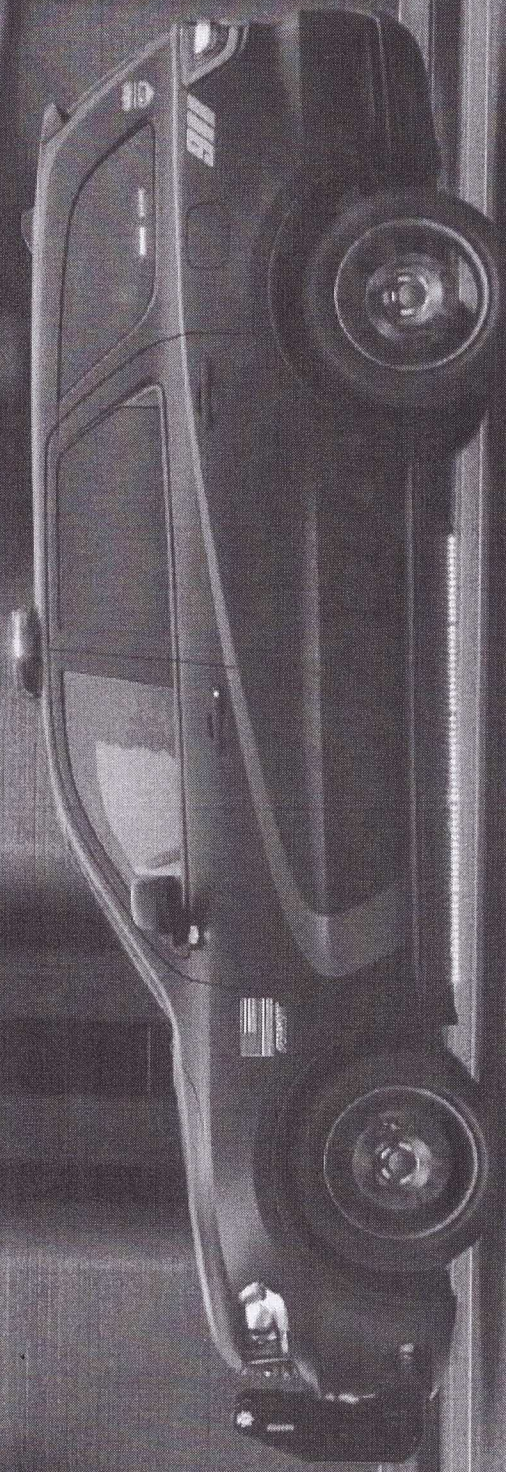
Dodge Durango Pursuit gives officers space where it's needed. And compared to the Ford Explorer Interceptor, the differences in headroom and shoulder room are marginal, as are the hip room, leg room and cargo capacity behind the 1st row. Here's the breakdown:



PURSUIT SAFETY & SECURITY FEATURES

Dodge Durango Pursuit already comes loaded with critical features that are designed to ease the officer's job, to protect and serve the public:

- High-strength advanced steel safety cage, seven standard air bags, and comprehensive package with safety alert systems for maximum protection
- Pursuit equipment like a powerful battery that churns out an available impressive 800 cold-cranking amps
- Spotlight wiring pre-prep
- Ready Alert Braking anticipates situations when the driver may initiate an emergency stop and sets the brake pads against the rotors decreasing the time required for full brake application
- Durango Pursuit has 8.1" of ground clearance over Ford Explorer Interceptor's 6.5" clearance making for safer pursuits, especially off-road



LAW ENFORCEMENT PURSUIT SUV COMPETITIVE COMPARISON

When it comes to key features in the pursuit utility category, the Dodge Durango Pursuit vehicle stacks up impressively versus the competition. The facts don't lie. Take a look for yourself.

PURSUIT UTILITY KEY FEATURES:	Dodge Durango Pursuit	Ford Explorer Interceptor	Chevy Tahoe PPV
Eight-Speed Automatic Transmission	Standard eight-speed	Standard six-speed	Standard six-speed
Rear Load Leveling Suspension	Standard	Not Available	Not Available
Three-Zone Automatic Temperature Control for Officer and K9 Comfort	Standard three zones	Two zones only	Two zones only
Towing Capability	Standard Max. 7,200 lbs. (AWD)	Standard Max. 3,000 lbs. (AWD)	Available Max. 4,000 lbs. (AWD)
Fuel Mileage	19 city / 26 hwy mpg	16 city / 21 hwy mpg	14 city / 19 hwy mpg
All-Wheel Drive	Standard	Standard	Available

The Legend Continues.



THE LEGEND CONTINUES.

Introducing the only SUV that could come from Charger Pursuit DNA. Dodge Durango Pursuit. The only HEMI®-powered police SUV.

DODGE DURANGO PURSUIT FEATURE AVAILABILITY

S = STANDARD. D = OPTIONAL. P = PART OF PACKAGE. NOTE: SOME FEATURES AND/OR APPLICATIONS MAY BE LATE AVAILABILITY.

ENGINE/TRANSMISSIONS	Pursuit
3.6-liter Pentastar V6, eight-speed automatic transmission, variable-valve timing	S
5.7-liter HEMI V8, eight-speed automatic transmission, with Fuel Saver Technology and variable-valve timing	D

MECHANICAL FEATURES	Pursuit
Brakes	
Anti-lock four-wheel disc, heavy-duty	S
Engine Cooling — Upgraded heavy-duty	
Exhaust system	
Dual rear exhaust with bright tips - V6 is single rear tip - V8 dual	S
Fuel Door — Power locking	S
Fuel Tank — 24.5-gallon	S
Shocks	
Load-leveling NVDOMAT	S
Steering	
Electric Power	S
Suspensions	
Rear load-leveling	S
Performance tuned — lowered ride height for enhanced handling	S/V8
Transfer Case/All-wheel Drive System	
All-Wheel Drive (AWD)	S
Single-speed, full-time AWD includes NV140 transfer case (packaged with 3.6L V6 engine)	S/V6
Two-speed active on-demand AWD (packaged with 5.7L HEMI V8 engine)	S/V8

EXTERIOR FEATURES	Pursuit
Fascias	
Body-color performance front fascia	S
Grille	
Gloss Black	S
Lighting	
Red/White auxiliary dome lamp	S
Automatic headlamps (ON/OFF) activate when ambient light is at low levels, includes headlamps-on-with-wipers	S
Halogen headlamps	S
Fog lamps	S
Halogen daytime running lamps	D
Mirrors	
Body-color, power, manual foldaway with heating element	S
Tires	
P265/60R18 BSW on/off road tires	S
Wheel Lip Moldings	
Accent-color	S
Wheels	
18-in. Painted aluminum	S
Wiper System	
Front, speed-sensitive, variable/intermittent with one-gallon fluid capacity	S
Rear, with fixed intermittent and continuous speeds, with washer	S

INTERIOR FEATURES	Pursuit
7-in. thin-film transistor reconfigurable digital gauge cluster — includes custom graphics features	S
Calibrated Speedometer	S

Air Conditioning	Pursuit
Rear air conditioning with headliner vents, no rear seat controls	S
Three-zone automatic temperature control, includes infrared sensors and rear-seat outlets	S
Air Filtration System	
Cargo Area	
Luggage compartment, scuff plate	S
Carpeted, includes storage tray and cargo tie-down loops, in floor	S
driver's side storage bin and 12-volt auxiliary power outlet	S
Console	
Full-length front floor console with two illuminated cup holders, two-tier armrest storage with interior 12-volt power outlet and LED-illuminated USB connection (if equipped), console lid tissue holder and storage tray with analogized shifter bezel, rear of console features air-conditioning vent controls, rear-seat heat controls (if equipped) and video jacks (if equipped)	S
Overhead front console with two LED map lamps, two dome lamps, sunglasses storage bin	S
Floor Mats	
Luxury front and rear	S
Lighting — glove box lamp, front LED map lamps, 2nd row ambient LED map lamps, Sapphire Blue ambient LED lighting on front-door inside handles and map pockets	S
Red/White auxiliary dome lamp	S
Mirrors	
Rearview, auto-dimming	S
Seals	
Cloth Black seats with Black stitching	S
Seats	
1st row, manual adjust (passenger)	S
1st row, eight-way power driver's seat	S

Front-passenger fold-flat seat	Pursuit
Power four-way driver's lumbar adjuster	S
2nd row, 60/40 split Fold-and-Tumble, with head restraints for the outboard seating positions	S
Steering Wheel	
Perforated leather-wrapped, with controls for audio, speed and Electronic Vehicle Information Center	S
Tilt/telescoping steering column	S

CONNECT: MULTIMEDIA	Pursuit
CD Player — Single-disc, remote	D
Media Hub — includes two USB ports and auxiliary jack	S
Six speakers	S
Radios	
Uconnect 7.0	S
Power Outlet	
Two 12-volt outlets, located on the instrument panel and in the rear cargo compartment	S

SAFETY & SECURITY	Pursuit
Active Head Restraints	S
Air Bags	
Advanced multistage, driver and front-passenger	S
Supplemental side-curtain (all rows)	S
Supplemental side	S
Driver inflatable knee bolster	S
Supplemental front-seat side	S

Electronic stability control — includes vehicle stability management system, Electronic Roll Mitigation, all-speed traction control, Brake Assist and four-channel antilock brake system	Pursuit
Hill-start Assist — prevents vehicle from rolling back for two seconds when starting vehicle on an incline	S
Keyless Enter 'n Go — push-button ignition system with proximity entry; driver can leave the key fob in pocket or purse, the doors are unlocked by touching the exterior door handle, and the vehicle will start with the push of a button on the instrument panel when the brake pedal is depressed	S
ParkSense — rear park assist system — sensors in rear bumper detect obstacles; includes shut-off switch	S
ParkView™ rear backup camera — rear-mounted camera with display in vehicle, activated when vehicle is shifted into Reverse	S
Rain Brake Support	S
ReadyAlert Braking	S
Sentry Key anti-theft engine immobilizer	S
Trailersway control	S

PACKAGES/EQUIPMENT GROUPS	Pursuit
Skid Plate Group — includes skid plates for front suspension, fuel tank, transfer case and underbody	D
Trailer Tow Group IV — includes 220-amp alternator, heavy-duty engine oil cooler, class IV hitch receiver, four-seven-pin wiring harness and full-size spare tire	D



DODGE DURANGO PURSUIT SPECIFICATIONS

GENERAL INFORMATION	
Vehicle Type	Four-door sport-utility vehicle
Assembly Plant	Jefferson Avenue North, Detroit, Mich.
EPA Vehicle Class	Multipurpose vehicle
Introduction Date	Third quarter 2018 as a 2019 model

BODY AND CHASSIS	
Layout	Longitudinal front engine, transfer case with full-time all-wheel drive
Construction	Steel unibody

ENGINE: 3.6-LITER PENTASTAR V6	
Availability	Standard
Type and Description	60-degree V-type, liquid-cooled
Displacement	270 cu. in. (3604 cu. cm)
Bore x Stroke	3.78 x 3.27 (96 x 83)
Valve System	Chain-driven DOHC, 24 valves and hydraulic anti-lift roller rockers
Fuel Injection	Sequential, multipoint, electronic, returnless
Construction	Aluminum deep-skirt block, aluminum alloy heads
Compression Ratio	10.2:1
Power (SAE J2723)	Single exhaust - 233 hp @ 6400 rpm Single exhaust - 235 hp @ 6400 rpm
Torque (SAE J2723)	250 lb.-ft. (333 N•m) at 4,000 rpm (both single and dual exhaust)
Max. Engine Speed	6,400 rpm (electronically limited)
Fuel Requirement	Unleaded regular, 87 octane (R + M)/2
Oil Capacity	6.0 quarts (5.7 liters)

Coolant Capacity	10.4 quarts (9.9 liters) without trailer tow 11 quarts (10.4 liters) with trailer tow
Emission Controls	Dual three-way catalytic converters, heated oxygen sensors and internal engine features ^a
EPA Fuel Economy mpg (city/hwy/combined)	AWD - 18/25/21

ENGINE: 5.7-LITER HEMI® V8	
Availability	Optional
Displacement	345 cu. in. (5,654 cu. cm)
Bore x Stroke	3.92 x 3.58 (99.5 x 90.9)
Valve System	Variable-valve timing (VT), pushrod-operated overhead valves, 16 valves, eight deactivating and eight conventional hydraulic lifters, all with roller followers
Fuel Injection	Sequential, multipoint, electronic, returnless
Construction	Deep-skirt cast-iron block with cross-bolted main bearing caps, aluminum alloy heads with hemispherical combustion chambers
Compression Ratio	10.5:1
Power (est.) (SAE J2723)	360 hp (268 kW) at 5,150 rpm
Torque (est.) (SAE J2723)	390 lb.-ft. (529 N•m) at 4,250 rpm
Max. Engine Speed	5,800 rpm (electronically limited)
Fuel Requirement	Unleaded mid-grade, 88 octane (R+M)/2 — recommended, unleaded regular, 87 octane (R+M)/2 — acceptable
Oil Capacity	7 quarts (6.6 liters)
Coolant Capacity	15.4 quarts (14.6 liters) without trailer tow 16 quarts (15.2 liters) with trailer tow
Emission Controls	Dual close-coupled three-way catalytic converters, quad heated oxygen sensors and internal engine features ^a
EPA Fuel Economy mpg (City/Hwy/Combined)	AWD - 14/22/17 RWD - 14/22/17
Assembly Plant	Saltillo Engine Plant, Saltillo, Mexico

^a Meets Calif. LEV II+ evaporative emission requirements in CA, NY, WA, ME, VT and Federal Bin 6+ Tier II emissions and Clean Fuel Fleet Certification (CFF).

TRANSMISSION: TORQUEFLITE EIGHT-SPEED AUTOMATIC 850RE	
Availability	Standard — on V6 models
Description	Driver-interactive manual control via shifters and electronically modulated torque converter clutch
Gear Ratios	
1st	4.71
2nd	3.14
3rd	2.11
4th	1.67
5th	1.29
6th	1.00
7th	0.84
8th	0.67
Reverse	3.30

TRANSMISSION: TORQUEFLITE AUTOMATIC, EIGHT-SPEED OVERDRIVE 8HP7D	
Availability	Standard — all V8 models
Description	Driver-interactive manual control via shifters and electronically modulated torque converter clutch with Eco mode
Gear Ratios	
1st	4.71
2nd	3.14
3rd	2.11
4th	1.67
5th	1.29
6th	1.00
7th	0.84
8th	0.67
Reverse	3.30

TRANSFER CASE: MP 3010	
Availability	Standard with V6 engine
Type	Single-speed
Operating Mode	Full-time AWD
Low Range Ratio	None
Torque Split: Front/Rear	50/50

TRANSFER CASE: MP 3023	
Availability	Standard with V6 engine and AWD
Type	Two-speed, electronically shifted
Operating Mode	AWD Low Lock, Neutral, full-time active AWD
Low Range Ratio	2.72
Torque Split: Front/Rear	Variable



DODGE DURANGO PURSUIT SPECIFICATIONS

AXLES	
Front	Conventional
Differential Type	Standard on AWD models
Availability	7.7 (195)
Ring Gear Diameter	3.45:1 (V6) 3.45:1 (V6 AWD)
Axle Ratios	3.09:1 (V6)
Rear	Conventional
Differential Type	Standard on all engines
Availability	7.7 (195) (V6)
Ring Gear Diameter	9.1 (230) (V8) 7.7 (195) (V6 AWD)
Ring Gear Diameter	3.45:1 (V6)
Axle Ratios	3.09:1 (V6) 3.45:1 (V6 AWD)

ELECTRICAL SYSTEM	
Alternator	220-amp Maintenance-free
Battery	H6 650 CCA + Auxiliary 200 CCA on Electronic Stop/Start (ESS) (V6) 800 CCA battery on the V8

SUSPENSION	
Front	Short- and long-arm independent (SLA), coil springs, gas-charged, twin-tube coil-over shock absorbers, steel upper- and aluminum lower-control arms ("H" arms), aluminum knuckle, stabilizer bar
Rear	Multi-link rear suspension, coil spring, twin-tube shocks (including load leveling for towing), aluminum lower control arm, independent upper links (tension and camber) plus a separate toe link

STEERING	
Steering Ratio	16.7
Lock-to-Lock Steering Wheel Rotations	3.2
Turning Diameter (Curb-to-Curb)	41 ft.

BRAKES	
Type	Anti-lock four-wheel disc heavy-duty
Front	
Rotor size and type	13.8 x 1.28 (350 x 32) vented disc
Caliper size and type	1.89 (48) two-piston pin-in-hat caliper
Swept area (sq. in. / sq. cm)	324 (2,088)
Rear	
Rotor size and type	13.0 x 0.87 (330 x 22) vented disc
Caliper size and type	1.89 (48) single-piston floating caliper
Swept area (sq. in. / sq. cm)	297 (1,958)

DIMENSIONS AND CAPACITIES	
Wheelbase	120
Track, Front	63.9
Track, Rear	64.1
Overall Length	201.2
Overall Width (at mirrors)	85.5
Body Width	75.8
Overall Height (at roof rail / at antenna)	70.9
Load Floor Height	32.2
Sill Step Height	20.5
Ground Clearance (with P285/60R18 tire and 3.6-liter engine)	8.1
Chassis (Fuel Tank)	10.0

Front Axle	9.6
Rear Axle	10.1
Approach Angle (degrees)	16.3
Breakover Angle (degrees)	18.1
Departure Angle (degrees)	21.5
Frontal Area	31.0 sq. ft. (2.88 sq. m)
Drag Coefficient	0.35
Fuel Tank Capacity	24.5 gal. (93.1 liter)

ACCOMMODATIONS	
Seating Capacity (1st / 2nd / 3rd rows)	2 / 3
1st / 2nd Rows	
Headroom	39.9 / 38.8
Legroom	40.3 / 38.6
Shoulder Room	56.5 / 50.4
Hip Room	57.0 / 42.8
Seat Travel	11.0 (280) driver, 6.0 (230) passenger
SAE Volume Index	54.4 cu. ft. (1.54 cu. m) / 44.8 cu. ft. (1.27 cu. m)
SAE Cargo Volume	
Behind 2nd Row	47.7 cu. ft. (1.35 cu. m)
Behind 1st Row with Rear Seats Folded	84.5 cu. ft. (2.39 cu. m)

TIRES & WHEELS	
Type and Material	Painted machine cast-aluminum, 10-spoke Satin Carbon
Size (inches)	18 x 8
Parking Brake Type	Rear, mechanical, drum-in-hat
Power Assist	Single-rate, tandem diaphragm vacuum
Size and Type	P285/60R18
Mfr. and Model	Michelin Black SideWall On/Off Road

Four-wheel Anti-lock Brakes	Standard
Electronic Stability Control	Standard
All-speed Traction Control	Standard
Brake Assist	Standard

ENGINE	GVM(R) lbs.	CURB WEIGHT(l) lbs.	PAYLOAD(c) lbs.
3.6-liter	6,500	4,849	1,640
5.7-liter	7,100	5,211	1,650

TRAILER TOWING: must have optional towing package to achieve maximum towing capacity		
Engine	Axle Ratio	Maximum Trailer Weight lbs. /50R20
3.6-liter V6	3.45	6,200
5.7-liter V8	3.09	7,200



Standard Features - WDEE75-DURANGO PURSUIT AWD

Code	Description
C1A	#1 Seat Foam Cushion
JJ3	118 MPH Maximum Speed Calibration
JKP	12V Auxiliary Power Outlet
JCF	140 MPH Primary Cert. Speedometer
WP1	18X8.0 Painted Aluminum Wheels
DJC	195MM Front Axle
DRH	195MM Rear Axle
XCH	2 Additional Key Fobs
BAJ	220 Amp Alternator
NF4	24.6 Gallon Fuel Tank
CFN	2nd Row 60/40 Folding Seat
DLK	3.45 Rear Axle Ratio
ERC	3.6L V6 24V VVT Engine Upg 1 w/ESS
BR8	4-Wheel Disc Heavy Duty Brakes
CYD	5 Passenger Seating
NAS	50 State Emissions
RCG	6 Speakers
BCZ	650 Amp Maintenance Free AGM Battery
RFJ	7.0" Touch Screen Display
DFT	8-Spd Auto 850RE Trans (Make)
RD3	Accent Color Shark Fin Antenna
MRD	Accent Color Wheel Lip Molding
GAK	Acoustic Windshield
CBD	Active Head Restraints
CG3	Advanced Multistage Front Air Bags
JMA	Air Filtering
RFP	Apple CarPlay
HAH	ATC w/3 Zone Temp Control
LMG	Automatic Headlamps
BC1	Aux Battery
JJM	Auxiliary 12-Volt Rear Power Outlet
MWVT	AWD Badge
CTL	Base Door Trim Panel
MMG	Belt Moldings
MNK	Body Color Door Handles
LEP	Body Color Exterior Mirrors
MBL	Body Color SRT Front Fascia
MBT	Body Color/Accent Color Rear Fascia
XJM	Capless Fuel Fill w/o Discriminator
CKN	Cargo Compartment Carpet
CKT	Cargo Tie Down Loops
CGU	Child Seat Anchor System-LATCH Ready
MFP	Chrome Headlamp Bezels

Standard Features - WDEE75-DURANGO PURSUIT AWD

Code	Description
*H7	Cloth Low-Back Bucket Seats
DS7	Conventional Differential Ft Axle
DS8	Conventional Differential Rear Axle
CLG	Covered Cargo Storage
GEG	Deep Tint Sunscreen Glass
CF9	Delete 3rd Row Seat
X82	Door Parts Module
CBR	Door Trimm Panel w/Ambient Lighting
CGY	Drvr Inflatable Knee-Bolster Air Bag
JJB	Dual Note Electric Horns
MZJ	Durango Bright Badge
SBL	Electric Power Steering
BNB	Electronic Stability Control
NHA	Engine Oil Cooler
LSE	Enhanced Accident Response System
NHJ	Exterior Mirrors w/Heating Element
CKD	Floor Carpet
BNR	Four Wheel Traction Control
LBR	Front & Rear Interior LED Lamps
GCB	Front Door Tinted Glass
X83	Front End Parts Module
X8W	Front Fascias Parts Module
MDA	Front License Plate Bracket
LAX	Front Passenger Seat Belt Alert
X89	Front Suspension Damper Parts Module
X84	Front Suspension Parts Module
CDW	Ft Pass Forward Fold Flat Seat
CUF	Full Length Floor Console
TBB	Full Size Spare Tire
LBC	Glove Box Lamp
RF5	Google Android Auto
JLP	GPS Antenna Input
Z6K	GVW Rating - 6500#
LMB	Halogen Headlamps
X8Y	Headliner Parts Module
NMC	Heavy Duty Engine Cooling
BNG	Hill Start Assist
HGA	Hood Insulation
CWP	Illuminated Cupholders
LAC	Illuminated Entry
JB5	Instr. Panel Platinum Chrome Bezel
X81	Instrument Panel Parts Module
RTF	Integrated Center Stack Radio

Standard Features - WDEE75-DURANGO PURSUIT AWD

Code	Description
XR8	Integrated Voice Command w/Bluetooth
CSV	Interior Assist Handles
XS4	K Black Interior Accents
GX4	Keyless Go
GAP	Laminated Front Door Glass
LA3	LED Tailamps w/Red Accents
CXG	Lock On Sync Tire Press Sensor
CLX	Luxury Front & Rear Floor Mats
RS6	Media Hub (2 USB, Aux)
TZH	Michelin Brand Tires
APA	Monotone Paint
XA8	Non Adjustable Pedals
SDA	Normal Duty Suspension
CUN	Overhead Console
TP5	P265/60R18 BSW On/Off Road Tires
XH3	ParkSense Rr Park Assist w/Stop
XAC	ParkView Rear Back-up Camera
CSR	Passenger Assist Handles
SCJ	Perforated Leather Wrapped Strg Whl
MFN	Performance Grille w/ Black Texture
JPU	Power 4-Way Driver Lumbar Adjust
JPR	Power 8-Way Dvr/Manual Pass Seat
JKY	Power Accessory Delay
GTS	Power Heated Mirrors, Fold-Away
XJA	Power Locking Fuel Filler Door
JPB	Power Locks
JAJ	Premium Instrument Cluster w/Tach
HGP	Premium Insulation Group
LTE	Premium LED Fog Lamps
XPF	Protective Coating and Remover
JP3	Pwr Front Windows, 1-Touch, Up & Down
XFC	R1234YF A/C Refrigerant
BHC	Rain Brake Support
BHD	Ready Alert Braking
HBB	Rear Air Conditioning w/Heater
X8U	Rear Fascias Parts Module
SES	Rear Load Leveling Suspension
X91	Rear Suspension Damper Parts Module
X85	Rear Suspension Parts Module
GNK	Rear View Auto Dim Mirror
GFA	Rear Window Defroster
JHB	Rear Window Wiper/Washer
GXM	Remote Keyless Entry

Standard Features - WDEE75-DURANGO PURSUIT AWD

Code	Description
GXD	Remote Proximity Keyless Entry
X8Z	Seat Parts Module
XX7	Selectable Steering Modes
GXX	Sentry Key Theft Deterrent System
MRF	Sill Molding
JER	Silver Metal Brush Instr Panel Bezel
DHY	Single Speed Transfer Case
AHV	Special Service Group
NHM	Speed Control
XG8	Sport Mode
SDE	Sport Suspension
LNO	Spot Lamp Wiring Prep.
WLB	Steel Spare Wheel
RDZ	Steering Wheel Mounted Audio Ctrls
XHZ	Stop-Start Dual Battery System
GNV	Sun Visors w/Vanity Mirror
CJ5	Supp. Side Curtain All Rows Air Bags
CJ1	Supplemental Ft Seat Side Air Bags
CGS	Supplemental Side Air Bags
JFJ	Temperature & Compass Gauge
SUD	Tilt/Telescope Steering Column
GBB	Tinted Windshield Glass
XBN	Tip Start
X88	Tire & Wheel Parts Module
XGM	Tire Pressure Monitoring Display
BNT	Trailer Sway Damping
NHQ	Transmission Heater
UAG	Uconnect 4 with 7" Display
RF7	USB Host Flip
JHA	Var Intermittent Windshield Wipers
LAZ	Vehicle Information Center

Osawatomie Police Department
Activity Report

		Dec-18		Prior Month	Change	Prior Year	Change
25	Warrant Arrests	10	15	22	3		
42	Other Arrest and /or Charges filed	75	(33)	19	23		
124	Traffic Stops	82	42	199	(75)		
46	Suspicious Activ., Inv. Persons , Ped Checks, Prowlers	57	(11)	179	(133)		
4	Traffic Accident Calls	11	(7)	14	(10)		
40	Assist EMS	33	7	48	(8)		
23	Fights , Disturbance , Assaults, Domestic, Harras, Violation of Protection Orders, Trespass	27	(4)	33	(10)		
1	Sex crimes	2	(1)	3	(2)		
28	Damage to Prop., Thefts, Burglarys,	30	(2)	24	4		
2	Drug Case or Calls	0	2	0	2		
	Drug Cases Cleared						
28	Animal calls	25	3	26	2		
4	Child in Need of Care, Runaways, Missing Children	4	0	2	2		
16	Vehicle Lock outs	20	(4)	17	(1)		
45	Escorts, Civil Stand-bys, 911 Misdials, Motor Assist, X-Patrol, Alarm Calls, Welfare Checks	39	6	47	(2)		
14	Citizen Inquires	31	(17)	84	(70)		
41	Calls for service otherwise not classified	45	(4)	86	(45)		
69	Assist Out Side Agency, Loud Music, , Traffic Haz, Driving Complaints, Drug Testing Finger Printing, Open Doors, Follow-ups, Found Property, Warrant Attempts, etc..	77	(8)	70	(1)		
510	Calls handled by Officers	493	17	854	(344)		
705	* Totals occurrences for the month	754	(49)	1067	(362)		
38	Traffic Citations	28	10	78	(40)		
17	Other Citations	42	(25)	8	9		
55	Total Citations	70	(15)	86	(31)		
* Total occurrences for the month include calls for service and dispatch activity, such as the issuance of burn permits, accepting fine payments, logging vehicle fuel, county fire calls, and other public assistance.							

2018 OPD ACTIVITY

	1st Qtr Totals	2nd Qtr Totals	3rd Qtr Totals	Oct-18	Nov-18	Dec-18	4th Qtr Totals	Year End Totals	2017 Year End Totals	Change
Warrant Arrests	87	86	83	16	10	25	51	307	288	19
Other Arrest / Charges filed	134	153	173	35	75	42	152	612	377	235
Traffic Stops	446	633	527	140	82	124	346	1952	2032	(80)
Suspicious Activ., Inv. Persons, Ped Checks, Prowlers	495	417	387	97	57	46	200	1499	1476	23
Traffic Accidents	36	43	27	16	11	4	31	137	163	(26)
Assist EMS	133	132	109	36	33	40	109	483	622	(139)
Fights , Disturbance, Assaults, Domestic, Harrasment, Violation of Protection Orders	105	176	125	26	27	23	76	482	427	55
Sex crimes	4	7	6	0	2	1	3	20	27	(7)
Damage to Prop., Thefts, Burglaries	79	85	106	34	30	28	92	362	349	13
Drug Cases Dispatched	10	11	4	2	0	2	4	29	39	(10)
Drug Cases Cleared	24	28	17	7	3	10	20	89	72	17
Animal calls	151	139	122	38	25	28	91	503	570	(67)
Child in Need of Care, Runaways, Missing Children	12	18	14	6	4	4	14	58	69	(11)
Vehicle Lock outs	39	54	43	27	20	16	63	199	231	(32)
Escorts, Civil Stand-bys, 911 Misdiags, Motor Assist, Xtra-Patrol, Alarm Calls, Welfare Checks	231	168	150	57	39	45	141	690	722	(32)
Citizen Inquires	255	211	160	39	31	14	84	710	873	(163)
Calls for service otherwise not classified	240	253	255	72	45	41	158	906	1183	(277)
Assist Out Side Agency, Loud Music, , Traffic Haz, Driving Complaints, Drug Testing Finger Printing, Open Doors, Follow- ups, Found Property, etc...	280	301	298	67	77	69	213	1092	1029	63
Calls handled by Officers	2603	2734	2416	673	493	510	1676	9429	10156	(727)
Actual Reports Taken by Officer	391	463	402	123	93	103	319	1575	1702	(127)
*Total requests for service	3561	3631	3243	1001	754	705	2460	12895	12617	278
Traffic Citations	170	307	174	52	28	38	118	769	939	(170)
Other Citations	69	191	180	36	42	17	95	535	268	267
Total Citations	239	498	354	88	70	55	213	1304	1207	97

CITY OF OSAWATOMIE
 YTD TREASURERS REPORT
 AS OF: OCTOBER 31ST, 2018

FUND	BEGINNING CASH BALANCE	Y-T-D REVENUES W/ACCRUAL	Y-T-D EXPENSES W/ACCRUAL	ACCRUAL ENDING CASH BALANCE	NET CHANGE OTHER ASSETS	NET CHANGE LIABILITIES	ENDING CASH BALANCE
01 -GENERAL OPERATING	359,414.51	2,236,060.66	2,136,263.75	459,211.42	0.00	0.00	459,211.42
02 -WATER	214,466.04	862,301.33	795,409.06	281,358.31	0.00	0.00	281,358.31
03 -ELECTRIC	435,765.21	3,387,266.52	3,190,580.10	632,451.63	0.00	0.00	632,451.63
04 -SEWER	222,860.37	779,195.47	725,400.90	276,654.94	0.00	0.00	276,654.94
05 -REFUSE	13,817.59	40,791.54	47,061.13	7,548.00	0.00	0.00	7,548.00
06 -LIBRARY	142,919.70	17,209.27	55,054.40	105,074.57	0.00	0.00	105,074.57
07 -RECREATION	0.00	18.27	18.27	0.00	0.00	0.00	0.00
08 -RURAL FIRE	0.00	0.00	0.00	0.00	0.00	0.00	0.00
09 -INDUSTRIAL PROMOTION	91,669.73	33,856.81	22,137.20	103,389.34	0.00	0.00	103,389.34
10 -REVOLVING LOAN	0.00	0.00	0.00	0.00	0.00	0.00	0.00
11 -SPECIAL PARK & RECREATION	82,338.03	22,088.62	54,108.02	50,318.63	0.00	0.00	50,318.63
12 -STREET IMPROVEMENTS	184,943.24	122,176.69	57,615.82	249,504.11	0.00	0.00	249,504.11
13 -TOURISM	35,772.24	40,746.16	26,497.33	50,021.07	0.00	0.00	50,021.07
14 -PUBLIC SAFETY EQUIPMENT	22,442.51	333,524.96	286,803.93	69,163.54	0.00	0.00	69,163.54
15 -SPECIAL 911 REVENUE	9,897.41	0.00	0.00	9,897.41	0.00	0.00	9,897.41
17 -RECREATION EMPLOYEE BENEF	0.00	2.28	2.28	0.00	0.00	0.00	0.00
18 -GOLF COURSE	11,035.48	287,358.16	307,300.78	(8,907.14)	0.00	0.00	(8,907.14)
21 -CIP - GENERAL	132,645.97	107,500.00	97,073.40	143,072.57	0.00	0.00	143,072.57
22 -CIP -WATER	0.00	0.00	0.00	0.00	0.00	0.00	0.00
23 -CIP - ELECTRIC	951,634.80	15,506.60	750,798.33	216,343.07	0.00	0.00	216,343.07
24 -CIP - SEWER	4,000.00	10,000.00	24,022.00	(10,022.00)	0.00	0.00	(10,022.00)
25 -CIP - STREET PROJECT	1,730,623.32	898,000.00	1,822,770.94	805,852.38	0.00	0.00	805,852.38
27 -CIP - GRANTS	269,023.13	0.00	281,746.14	(12,723.01)	0.00	0.00	(12,723.01)
29 -CIP - SPECIAL PROJECTS	0.00	0.00	0.00	0.00	0.00	0.00	0.00
31 -EMPLOYEE BENEFITS	167,293.43	714,777.73	585,721.86	296,349.30	0.00	0.00	296,349.30
32 -CAFETERIA 125	62,520.36	36,665.37	27,490.57	71,695.16	0.00	0.00	71,695.16
35 -TECHNOLOGY FUND - CIP	0.00	239,334.88	113,358.60	125,976.28	0.00	0.00	125,976.28
41 -BOND & INTEREST	193,896.28	717,200.70	822,280.00	88,816.98	0.00	0.00	88,816.98
43 -ELECTRIC DEBT SERVICE	149,989.60	363,104.20	435,726.25	77,367.55	0.00	0.00	77,367.55
51 -COURT ADSAP	7,401.00	0.00	0.00	7,401.00	0.00	0.00	7,401.00
52 -COURT BONDS	15,251.54	24,904.75	23,741.75	16,414.54	0.00	0.00	16,414.54
53 -FORFEITURES	1,918.17	10,269.26	8,213.98	3,973.45	0.00	0.00	3,973.45
54 -EVIDENCE LIABILITY	12,899.79	0.00	0.00	12,899.79	0.00	0.00	12,899.79
57 -FIRE INSURANCE PROCEEDS	0.84	40,300.50	40,300.50	0.84	0.00	0.00	0.84
93 -PAYPAL CLEARING FUND	0.01	0.00	0.00	0.01	0.00	0.00	0.01
95 -CLEARING ACCOUNT	0.00	0.00	0.00	0.00	0.00	0.00	0.00
GRAND TOTAL	5,526,440.30	11,340,160.73	12,737,497.29	4,129,103.74	0.00	0.00	4,129,103.74

*** END OF REPORT ***

CITY OF OSAWATOMIE
YTD TREASURERS REPORT
AS OF: NOVEMBER 30TH, 2018

FUND	BEGINNING CASH BALANCE	Y-T-D REVENUES W/ACCRUAL	Y-T-D EXPENSES W/ACCRUAL	ACCRUAL ENDING CASH BALANCE	NET CHANGE OTHER ASSETS	NET CHANGE LIABILITIES	ENDING CASH BALANCE
01 -GENERAL OPERATING	359,414.51	2,484,133.50	2,320,726.16	522,821.85	0.00	0.00	522,821.85
02 -WATER	214,466.04	948,594.76	918,703.36	244,357.44	0.00	0.00	244,357.44
03 -ELECTRIC	435,765.21	3,684,243.47	3,593,825.44	526,183.24	0.00	0.00	526,183.24
04 -SEWER	222,860.37	860,751.18	882,112.42	201,499.13	0.00	0.00	201,499.13
05 -REFUSE	13,817.59	40,806.54	47,653.61	6,970.52	0.00	0.00	6,970.52
06 -LIBRARY	142,919.70	17,353.51	55,285.67	104,987.54	0.00	0.00	104,987.54
07 -RECREATION	0.00	18.27	18.27	0.00	0.00	0.00	0.00
08 -RURAL FIRE	0.00	0.00	0.00	0.00	0.00	0.00	0.00
09 -INDUSTRIAL PROMOTION	91,669.73	35,856.81	23,085.64	104,440.90	0.00	0.00	104,440.90
10 -REVOLVING LOAN	0.00	0.00	0.00	0.00	0.00	0.00	0.00
11 -SPECIAL PARK & RECREATION	82,338.03	27,088.62	58,734.02	50,692.63	0.00	0.00	50,692.63
12 -STREET IMPROVEMENTS	184,943.24	122,176.69	59,434.89	247,685.04	0.00	0.00	247,685.04
13 -TOURISM	35,772.24	40,746.16	27,385.52	49,132.88	0.00	0.00	49,132.88
14 -PUBLIC SAFETY EQUIPMENT	22,442.51	333,524.96	286,803.93	69,163.54	0.00	0.00	69,163.54
15 -SPECIAL 911 REVENUE	9,897.41	0.00	0.00	9,897.41	0.00	0.00	9,897.41
17 -RECREATION EMPLOYEE BENEF	0.00	2.28	2.28	0.00	0.00	0.00	0.00
18 -GOLF COURSE	11,035.48	299,733.77	322,489.01	(11,719.76)	0.00	0.00	(11,719.76)
21 -CIP - GENERAL	132,645.97	150,000.00	98,573.40	184,072.57	0.00	0.00	184,072.57
22 -CIP -WATER	0.00	0.00	0.00	0.00	0.00	0.00	0.00
23 -CIP - ELECTRIC	951,634.80	16,848.20	767,210.67	201,272.33	0.00	0.00	201,272.33
24 -CIP - SEWER	4,000.00	10,000.00	24,022.00	(10,022.00)	0.00	0.00	(10,022.00)
25 -CIP - STREET PROJECT	1,730,623.32	898,000.00	1,822,770.94	805,852.38	0.00	0.00	805,852.38
27 -CIP - GRANTS	269,023.13	0.00	276,461.57	(7,438.44)	0.00	0.00	(7,438.44)
29 -CIP - SPECIAL PROJECTS	0.00	0.00	0.00	0.00	0.00	0.00	0.00
31 -EMPLOYEE BENEFITS	167,293.43	764,374.48	624,196.93	307,470.98	0.00	0.00	307,470.98
32 -CAFETERIA 125	62,520.36	44,668.17	29,987.87	77,200.66	0.00	0.00	77,200.66
35 -TECHNOLOGY FUND - CIP	0.00	239,334.88	120,677.57	118,657.31	0.00	0.00	118,657.31
41 -BOND & INTEREST	193,896.28	829,650.70	822,280.00	201,266.98	0.00	0.00	201,266.98
43 -ELECTRIC DEBT SERVICE	149,989.60	399,414.62	435,726.25	113,677.97	0.00	0.00	113,677.97
51 -COURT ADSAP	7,401.00	0.00	0.00	7,401.00	0.00	0.00	7,401.00
52 -COURT BONDS	15,251.54	25,204.75	25,791.75	14,664.54	0.00	0.00	14,664.54
53 -FORFEITURES	1,918.17	10,269.26	9,625.08	2,562.35	0.00	0.00	2,562.35
54 -EVIDENCE LIABILITY	12,899.79	0.00	0.00	12,899.79	0.00	0.00	12,899.79
57 -FIRE INSURANCE PROCEEDS	0.84	40,300.50	40,300.50	0.84	0.00	0.00	0.84
93 -PAYPAL CLEARING FUND	0.01	0.00	0.00	0.01	0.00	0.00	0.01
95 -CLEARING ACCOUNT	0.00	0.00	0.00	0.00	0.00	0.00	0.00
GRAND TOTAL	5,526,440.30	12,323,096.08	13,693,884.75	4,155,651.63	0.00	0.00	4,155,651.63

*** END OF REPORT ***